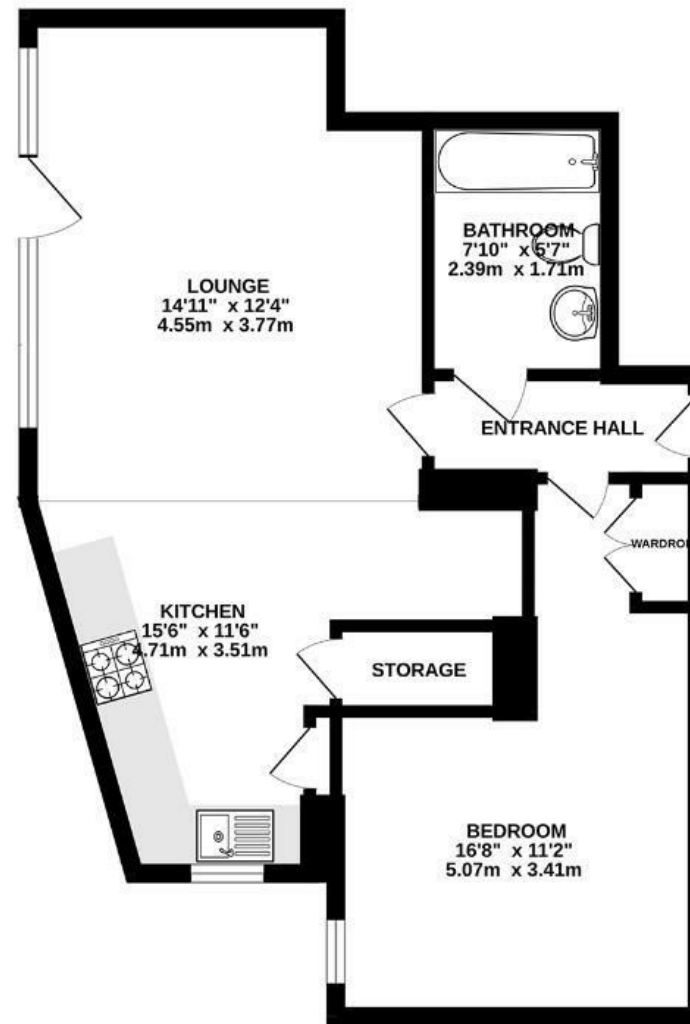


Balmoral House

HARBOURSIDE

APPROXIMATE FLOOR AREA
47.7 SQM / 514 SQFT



Illustrations are for reference purposes only, measurements are approximate, not to scale.

Boardwalk

Canons Way , BRISTOL

£

£210,000



BS1 5LN

zzz

1 Bedrooms



1 Bathrooms

"From the moment we stepped inside, we felt at home. This flat has a warmth that's hard to describe - full of natural light, calm, and that quiet sense of comfort you only find in special places. We've loved its relaxing atmosphere and its unbeatable location next to the beautiful marina, where you can enjoy peaceful walks by the water around the Harbourside. It's the perfect balance: close to cosy pubs and restaurants, yet tucked away enough to feel tranquil and private - a place that welcomes you and makes you feel you truly belong."

