
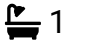

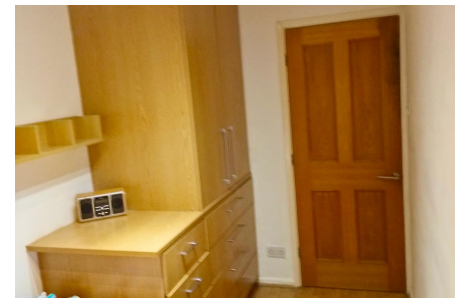
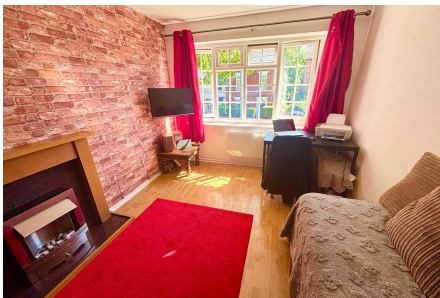


Hall Street, Stockport, SK1 4DA

Offers In Region Of £117,500

 1
  1
  1
**RECENTLY REDUCED - NO ONWARD CHAIN**

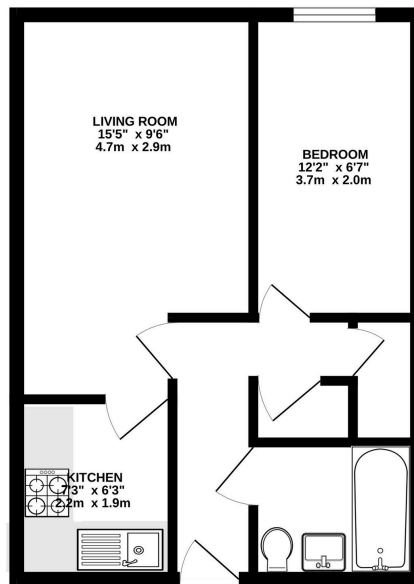
Back on Market

A 1st Floor flat located within walking distance of Stockport Town Centre with Transport links to the A6 / M60 and Stockport train station There is also private parking to the rear. IDEAL FIRST HOME. or BUY TO LET Investment. No Excessive Management charges - Only a £40 contribution to residents association . EXCEPTIONAL VALUE -NO ONWARD CHAIN PM1257

Key Features

- No Chain Quote REF: PM1257
- Desirable location near Central Stockport
- Close to local Stockport amenities
- Maintained Communal Front Garden
- Low Service Charge £40 per month contribution to Residents Association
- First Floor Flat
- Allocated Parking area
- Double Glazed
- Transport Links- Stockport Interchange (Buses/Trains) A6 / M60
- 949 Years Left on Lease

GROUND FLOOR
364 sq.ft. (33.8 sq.m.) approx.



TOTAL FLOOR AREA: 364 sq ft. (33.8 sq.m.) approx.
Whilst every attempt has been made to ensure the accuracy of the floorplan contained herein, measurements of doors, windows, rooms and any other items are approximate and no responsibility is taken for any error, omission or misstatement. This plan is for illustrative purposes only and should be used as such by any prospective purchaser. The services, systems and appliances shown have not been tested and no guarantee as to their quality or efficiency can be given.
 Made with Metropix ©2025