
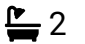

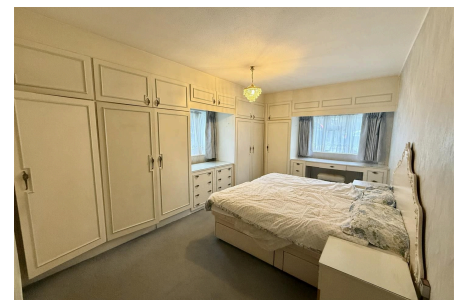


Lodge Close, Edgware, HA8 7RL

Guide Price £447,000

 3  2  1



A well presented three bedroom, two-bathroom, spacious apartment situated on the ground floor of a well-maintained development just off Cannons Drive in Edgware.

The apartment is offered chain free, with features including a spacious open-plan living and dining area with access to a private balcony. There are three good sized bedrooms with an ensuite in the master bedroom.

Additional benefits include allocated parking, a private garage, communal gardens, lift access, and a secure well-kept environment.

Key Features

- Chain Free
- Long Lease
- Patio
- Three Bedrooms
- Share of Freehold
- Off Street Parking



Lodge Close, Edgware, HA8 7RL

Approximate Area = 1189 sq ft / 110.4 sq m
For identification only - Not to scale



Floor plan produced in accordance with RICS Property Measurement 2nd Edition, incorporating International Property Measurement Standards (IPMS) 2025. Produced for Melvin Jacobs Estate Agents - REF: 1379987