



Powis Gardens, W11

£13,500 Per week

A spacious and immaculate five bedroom family house over five floors, with fantastic proportions and large private garden situated in the beautiful Westbourne Grove.

Just west of Ledbury Road close to Notting Hill's popular bars, restaurants and boutiques just moments away and within easy walking distance of Notting Hill Gate.

Features

- Five Bedroom House
- Over Five Floors
- Four Bathrooms
- Eat-in Kitchen
- Conservatory
- Large Private Garden



Powis Gardens, W11

A spacious and immaculate five bedroom family house over five floors, with fantastic proportions and large private garden situated in the beautiful Westbourne Grove.- Brochure

A spacious and immaculate five bedroom family house over five floors, comprises of a double reception with wood floors, study area, fully fitted eat- in kitchen and family room with conservatory dining area out to garden. - Window

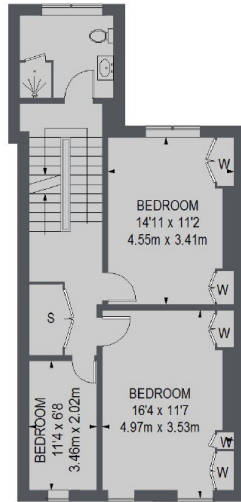
Property comprises of a double reception with wood floors, study area with doors out to garden and stairs down to the fully fitted eat- in kitchen family room with conservatory dining area out to garden.

First floor consist of master bedroom, dressing area and wonderfully spacious ensuite bathroom, two further bedrooms and bathroom,

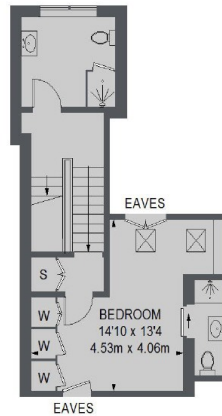
Furthermore the top floor bedroom has an ensuite shower room and separate utility room.



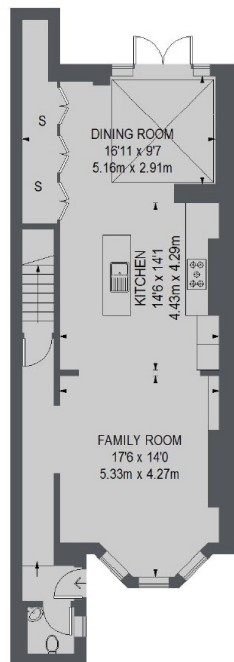
Powis Gardens, London, W11



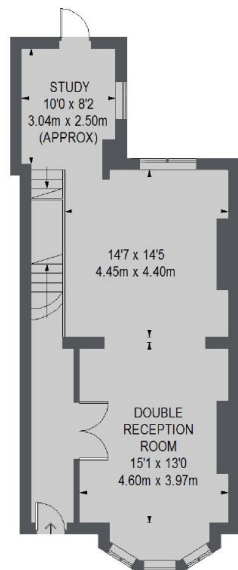
SECOND FLOOR



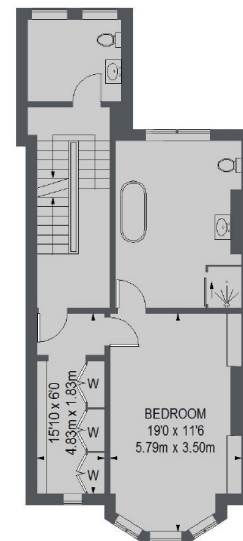
THIRD FLOOR



LOWER GROUND FLOOR



RAISED GROUND FLOOR



FIRST FLOOR

TOTAL APPROX. FLOOR AREA
3101 SQ. FT. (288.14 SQ. M.)