



Horn Lane, W3

£350,000

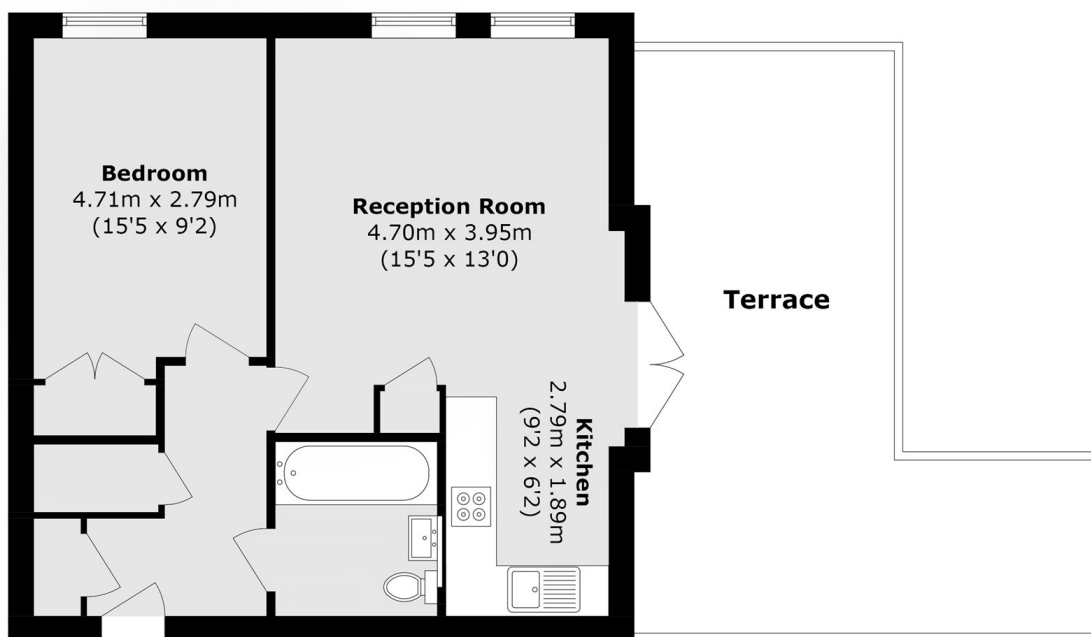
This top-floor, dual-aspect apartment is flooded with natural light and features an open-plan layout and abundance of storage and patio doors lead to a generous west-facing terrace, perfect for evening sun. The property is offered with a long lease and is available with no onward chain.

Less than half a mile from Acton Central station (Overground) and just over half a mile from Acton Main Line station (Elizabeth line) and Acton Town tube station.

Features

- Penthouse Apartment
- Large One Bedroom
- West Facing Terrace
- Dual Aspect
- Long Lease
- No Onwards Chain

Horn Lane, London, W3



Total area (approx.): 47.1 sq. m (506.9 sq. ft)
Terrace Total (approx.): 26.1 sq. m (280.9 sq. ft)