



WANDSWORTH BRIDGE ROAD, SW6

£1,150,000

Large garden
Excellent condition
Three bedrooms
Leasehold
Near Eel Brook Common
Parsons Green

@marshandparsons
marshandparsons.co.uk

MARSH &
PARSONS



ABOUT THE PROPERTY

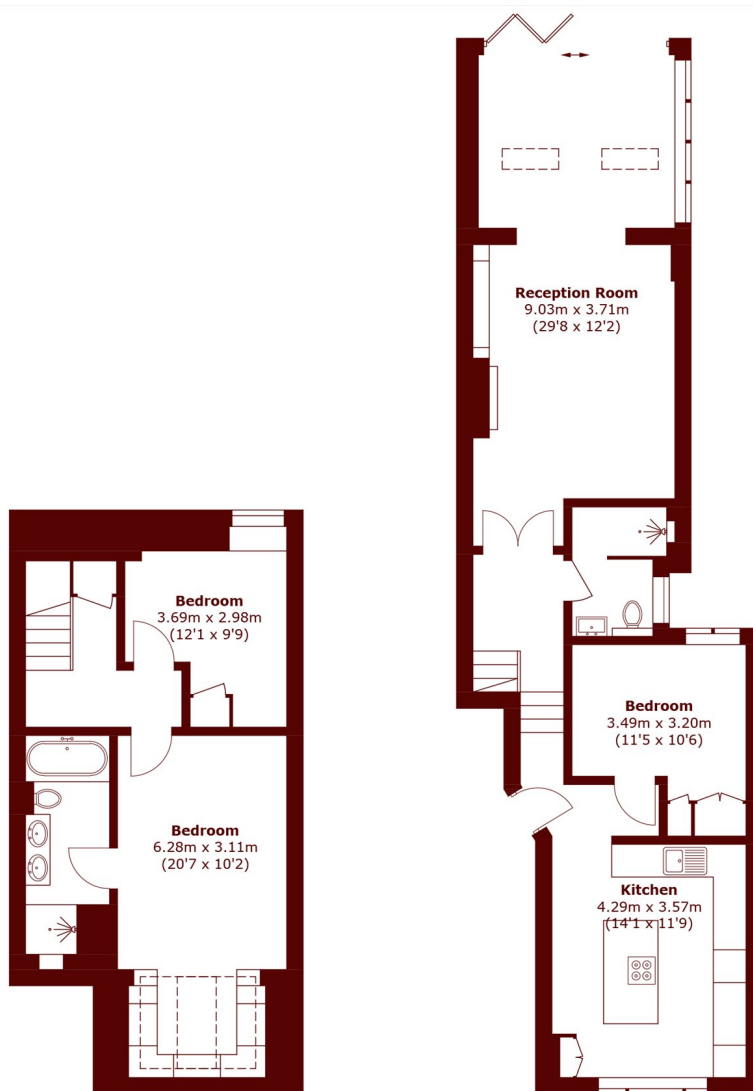
An immaculate three bedroom, two bathroom split-level garden flat located in the highly sought after Parsons Green area.

Arranged over two levels, the property offers well-balanced accommodation with excellent natural light throughout. The open plan living and dining area is bright and well-proportioned, with direct access onto a large, private and well-maintained garden, creating a practical indoor-outdoor layout.

The reception space is complemented by a separate modern kitchen, fully equipped and offering ample storage.



STEP INSIDE WANDSWORTH BRIDGE ROAD



Lower Ground Floor

Ground Floor

Total area (approx.): 112.8 sq. m (1,214.2 sq. ft)

Fulham
020 7736 9822

Energy Rating: C We aim to make our particulars both accurate and reliable. However, they are not guaranteed; nor do they form part of an offer or contract. If you require clarification on any points then please contact us, especially if you're traveling some distance to view. Please note that appliances and heating systems have not been tested and therefore no warranties can be given as to their good working order

**MARSH &
PARSONS**