

Lant Street, SE1

£275,000

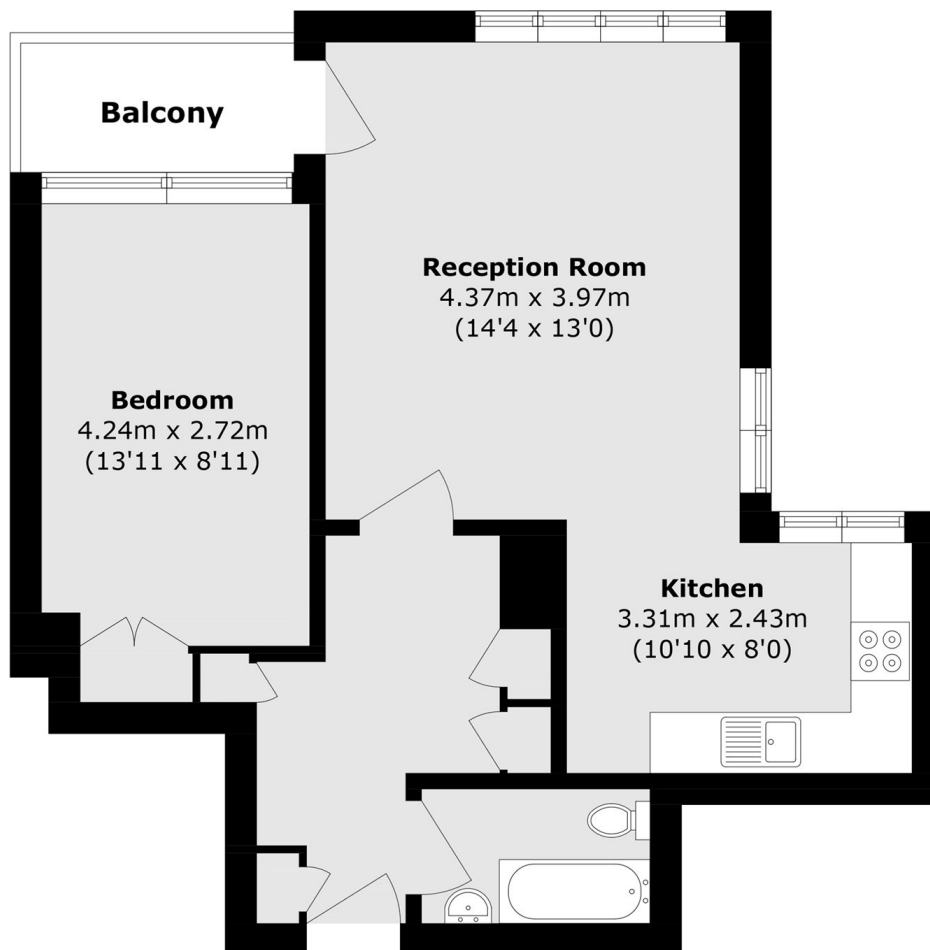
Offers In excess of £295,000 - An 8th floor flat with an open plan kitchen and living room, leading out onto a private south facing balcony with fantastic views, a three piece bathroom and generous double bedroom. Plus permit parking. Cash buyers only. Chain free sale.

Redman House is tucked back off Lant Street, just behind Borough Tube Station at the foot of Borough High Street with easy access into the City, along with Borough Market, London Bridge Station and the South Bank.

Features

- Cash Buyers
- Chain Free
- 8th Floor Flat
- Private Balcony
- Secure Entry & Lift Access
- Permit Parking Available
- Excellent Transport Links

Lant Street, London, SE1



Total area (approx.): 50.1 sq. m (539.2 sq. ft)

Balcony area (approx.): 4.0 sq. m (43.0 sq. ft)