



Honeybourne Road, NW6

£799,000

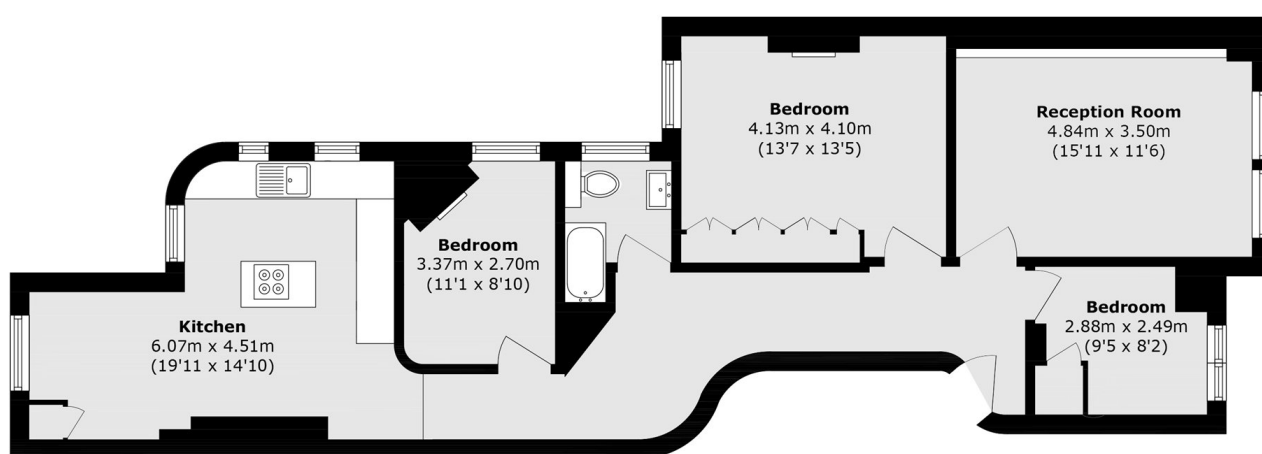
A three bedroom apartment located on the top floor of this prestigious and highly sought after Edwardian mansion block. The property benefits from a fully fitted kitchen/dining room, well looked after communal gardens and it will be sold with no onward chain.

Honeybourne Road is a highly sought after quiet residential street which is conveniently located with easy access of the shops, bars and restaurants of West End Lane including multiple transport links.

Features

- Three Bedrooms
- Top Floor
- Open Plan
- Porter
- Communal Gardens
- No Onward Chain

Honeybourne Road, London, NW6



Total area (approx.): 88.6 sq. m (953.6 sq. ft)

Dexters

West Hampstead Sales
349 West End Lane
London
NW6 1LT
Sales
020 7644 9300

Energy Rating: D. We aim to make our particulars both accurate and reliable. However they are not guaranteed; nor do they form part of an offer or contract. If you require clarification on any points then please contact us, especially if you're traveling some distance to view. Please note that appliances and heating systems have not been tested and therefore no warranties can be given as to their good working order.

 **RICS** | Regulated
Estate Agent
and Letting Agent

[dexters.co.uk](https://www.dexters.co.uk)