



6

Loch View, Ardpeaton, Cove, Helensburgh, Argyll And Bute. G84 0PF





6

Loch View, Ardpeaton, Cove, Helensburgh, Argyll And Bute. G84 0PF



Located within the picturesque hamlet of Ardpeaton, 6 Loch View is a superb three-bedroom end-terrace villa that has gorgeous views towards Loch Long and were originally built for the Ministry of Defence in the late 1970's.

Accessed from Barbour Road, Loch View has a mix of terrace properties and flats with number 6 being a favoured end-terrace which has a gorgeous interior and the recent addition of a new roof and boundary fencing. Offering over 900 square feet of living space the property is bright and airy throughout and has the advantage of wet electric central heating. On entering there is a welcoming hallway which has a useful store cupboard and utility room which is plumbed for a washing machine. The lounge is a fabulous space with dual aspects over the private front and rear gardens and ample space for a good-sized dining table and chairs if required. The kitchen has been fully upgraded with stunning units and worktops and has a range of good quality integral appliances including a dishwasher. The kitchen has an additional cupboard and a courtesy door accessing a raised patio overlooking the private south facing garden.

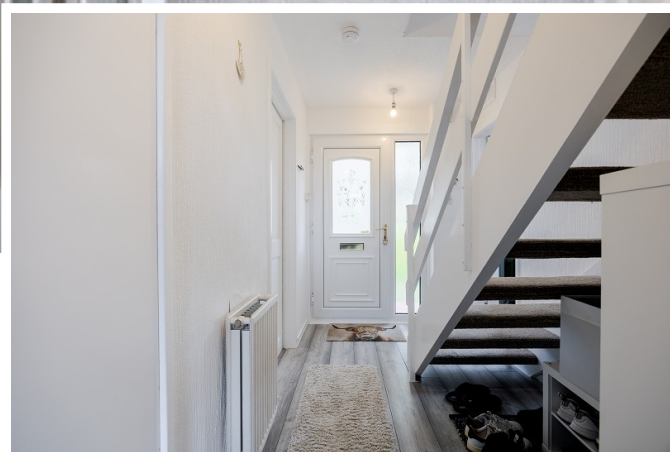
Upstairs the property has three well-proportioned bedrooms two of which have built-in storage and one with magnificent views towards Loch Long. The main and second bedroom are to the front and enjoy views over neighbouring farm land. There is a modern shower room and two store cupboards available on the landing.

Externally the property enjoys a beautiful private garden with the rear being south facing. The gardens are mainly laid to lawn with a large patio area. Particular note should mention the garden has just had a new boundary fence installed. The property also has a private single garage and access to all of the well-maintained communal grounds around the development.

EPC Band D, Council Tax Band C



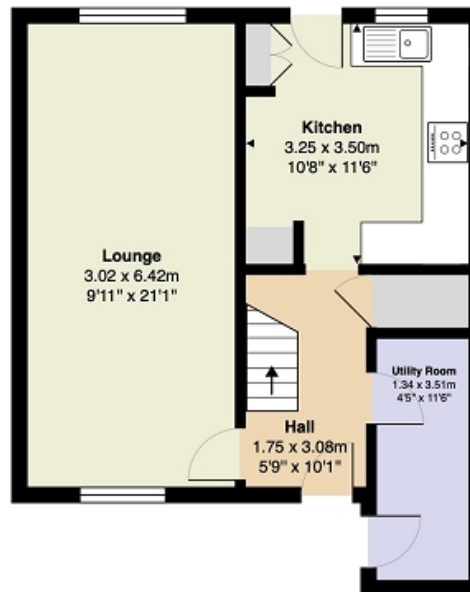
6
Loch View, Ardpeaton, Cove, Helensburgh, Argyll And Bute. G84 0PF



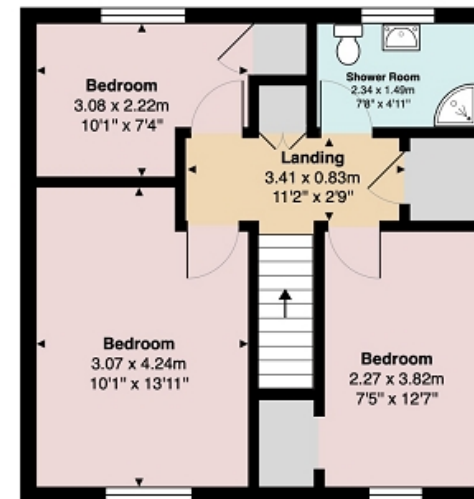


Measurements

Hallway	10' 01" Max x 5' 09" Max or 3.07m Max x 1.75m Max
Utility Room	11' 06" x 4' 05" or 3.51m x 1.35m
Lounge	21' 01" x 9' 11" or 6.43m x 3.02m
Kitchen	11' 06" Max x 10' 08" Max or 3.51m Max x 3.25m Max
Landing	11' 02" x 2' 09" or 3.40m x 0.84m
Bedroom 1	13' 11" Max x 10' 01" Max or 4.24m Max x 3.07m Max
Bedroom 2	12' 07" x 7' 05" or 3.84m x 2.26m
Bedroom 3	10' 01" Max x 7' 04" Max or 3.07m Max x 2.24m Max
Shower Room	7' 08" x 4' 11" or 2.34m x 1.50m



Ground Floor



First Floor

All measurements are approximate and for display purposes only

Contact our office for further details



rightmove 
find your happy

NOTE: These details have been prepared for guidance. If there is any point which you find misleading please contact McArthur Stanton where further information is available. Measurements have been taken from wall to wall, unless otherwise stated, and have been recorded by use of a sonic beam. Services and appliances not tested. Details have been prepared by May 2026. If required, we can arrange for a property market appraisal to be carried out on your existing property.

6

Loch View, Ardpeaton, Cove, Helensburgh, Argyll And Bute. G84 0PF

