



GORDON PLACE, W8

£825,000

One Bedroom
One Bathroom
Recently Refurbished
Roof Terrace
Great Kensington Location
Leasehold

@marshandparsons
marshandparsons.co.uk

MARSH &
PARSONS



ABOUT THE PROPERTY

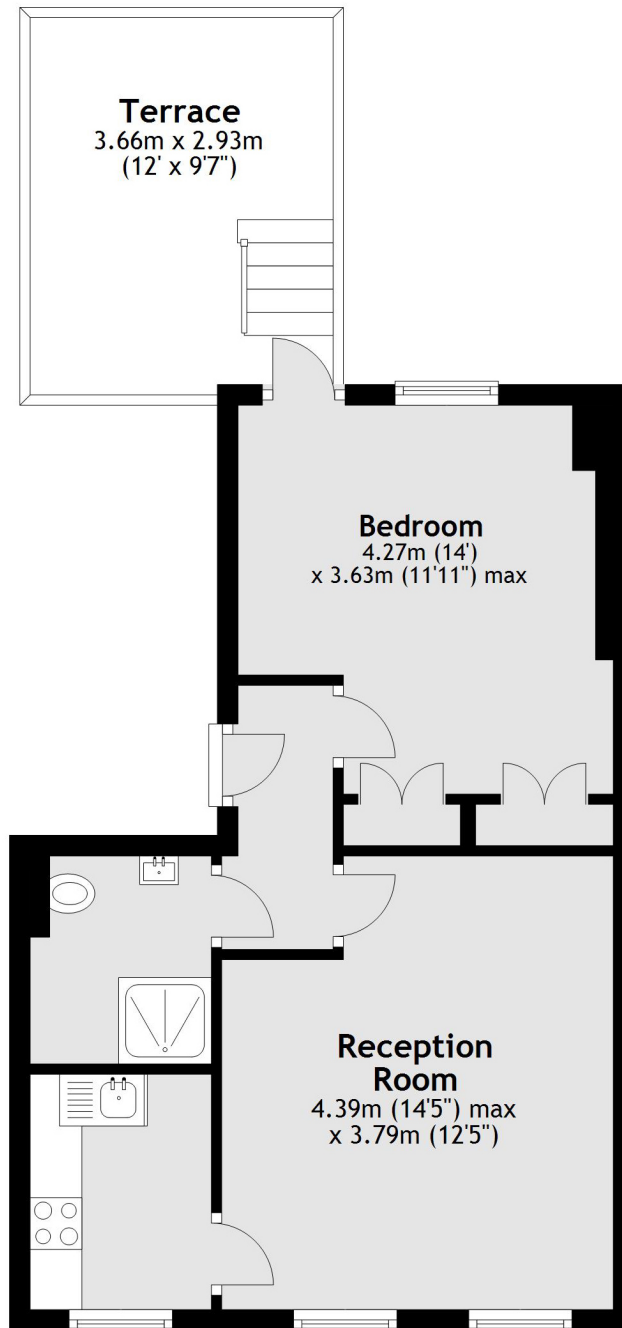
A well presented one-bedroom, one-bathroom apartment featuring a private roof terrace and is set on one of Kensington's most desirable streets. On the second floor, the home is flooded with natural light and has been arranged to enhance both space and brightness.

The generously sized kitchen and reception area enjoy westerly rooftop views. The double bedroom benefits from excellent built-in storage and opens directly onto a delightful private terrace, perfect for unwinding or hosting guests.

Gordon Place benefits from excellent transport and shopping facilities of Kensington High Street and Notting



STEP INSIDE GORDON PLACE



Total area: approx. 40.7 sq. metres (437.8 sq. feet)

Kensington
020 7368 4450

Energy Rating: We aim to make our particulars both accurate and reliable. However, they are not guaranteed; nor do they form part of an offer or contract. If you require clarification on any points then please contact us, especially if you're traveling some distance to view. Please note that appliances and heating systems have not been tested and therefore no warranties can be given as to their good working order

**MARSH &
PARSONS**