

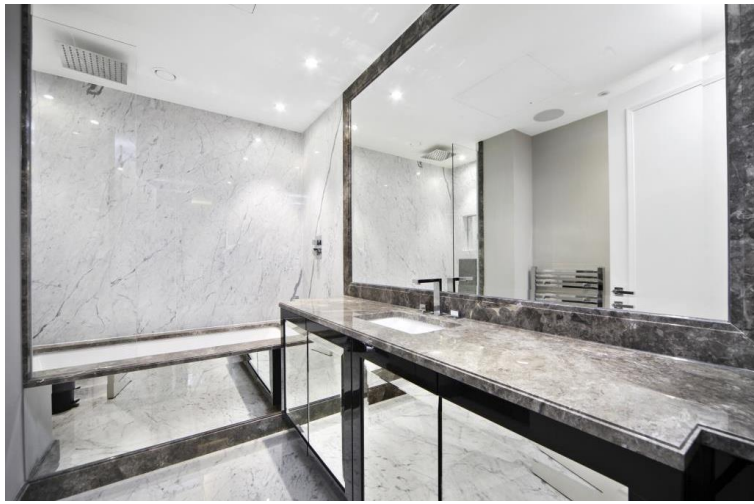


## Eccleston Street, London SW1W

Price £825 per week - Furnished







## Description

A stunning one bedroom apartment located in Chantrey House, moments from Victoria Station, SW1W.

Situated on the second floor, (with lift), this well-furnished one bedroom apartment comprises a double bedroom with large fitted wardrobes, reception area, contemporary kitchen with fully fitted appliances, luxury bathroom, wood flooring and excellent storage.

Chantrey House is approximately 0.2 miles from Victoria Station in the heart of central London, and the development benefits from on site concierge and lift access

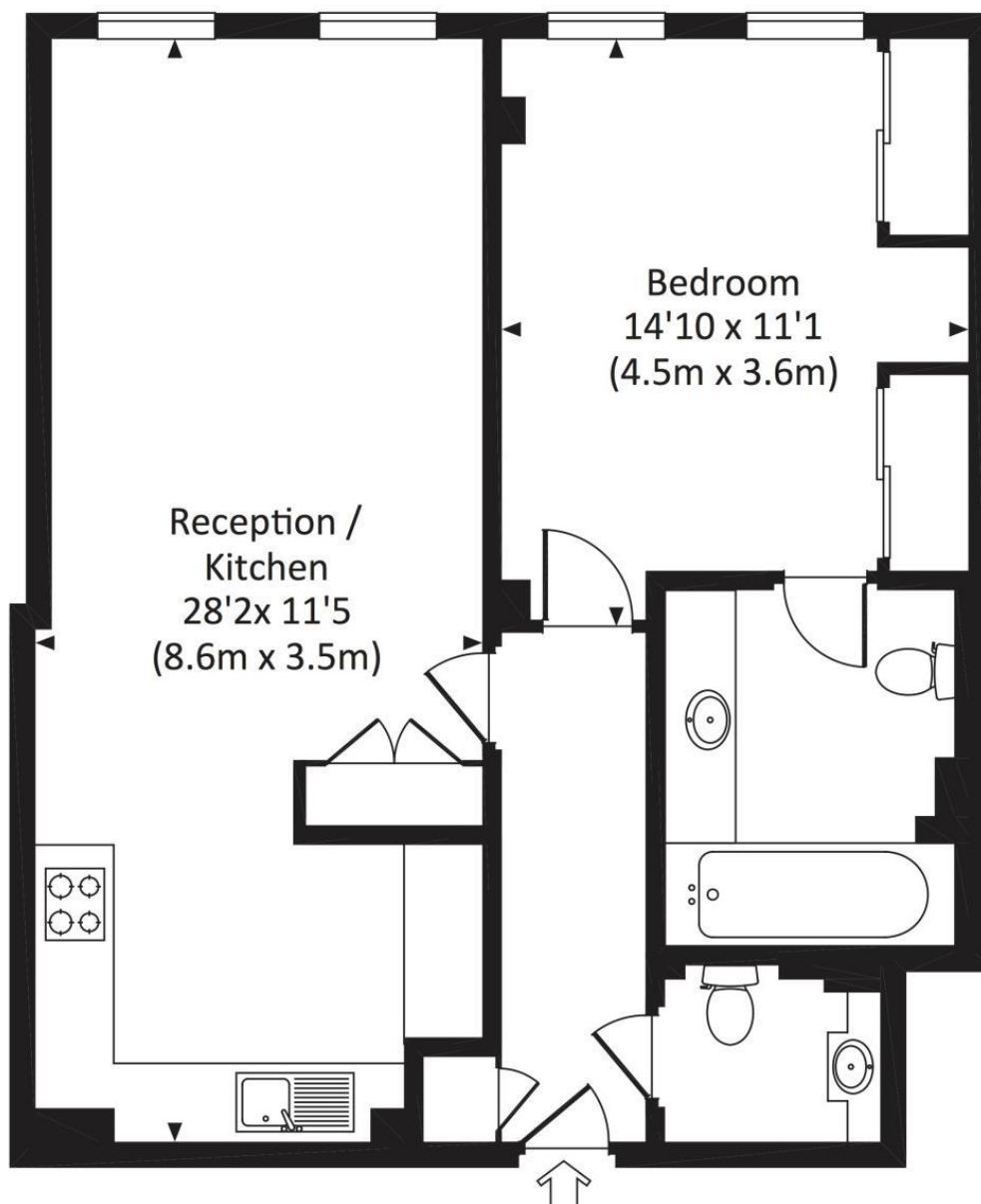
Council tax band: F. Rent is payable on a monthly basis, and you may be required to pay more than a month's rent in advance for tenancies with annual rents exceeding £100,000. You will be required to pay a 1 week holding deposit following a successful offer. Tenancies with annual rents up to £50,000 will require a 5 weeks' security deposit, while those exceeding this threshold will require a 6 weeks' deposit. Utility bills, council tax, telephone line and broadband are not included in the rent. As well as paying the rent, you may also be required to make some additional permitted payments. If your tenancy does not qualify as an APT, additional fees may apply. Please visit [jll.co.uk/fees](http://jll.co.uk/fees) for details of fees that may be payable when renting a property. To check broadband and mobile phone coverage please visit Ofcom here [ofcom.org.uk/phones-telecoms-and-internet/advice-for-consumers/advice/ofcom-checker](http://ofcom.org.uk/phones-telecoms-and-internet/advice-for-consumers/advice/ofcom-checker)

- 1 Double bedroom
- 1 Bathroom (en suite)
- Guest cloakroom
- Reception room
- Open plan kitchen
- Second floor
- Lift
- Building manager
- Approx. 651 sq ft (60 sq m)
- Furnished

# Floorplan

651 sq ft | 61 sq m

Approx. gross internal area  
651 Sq Ft. / 60.5 Sq M.



SECOND FLOOR



All measurements are approximate and for illustration purposes only as defined by the RICS Code of Measuring Practice © 2015  
Dowling Jones Design www.dowlingjones.com 020 7610 9933

Chelsea  
2 Cale Street,  
London SW3 3QU  
+4420 7399 5010  
saleschelsea@jll.com

*Urban living, your way.*

[jll.co.uk/residential](http://jll.co.uk/residential)

© 2019 Jones Lang LaSalle IP, Inc. All rights reserved. All information contained herein is from sources deemed reliable; however, no representation or warranty is made to the accuracy thereof.

