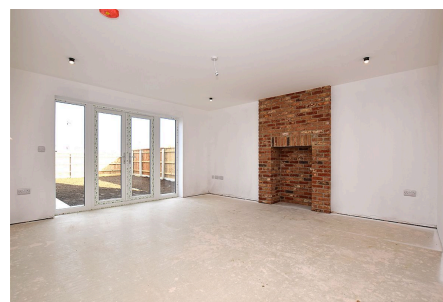


## 18 Howards Way, Gayton, King's Lynn PE32 1WJ

£425,000

 3  2  2



Welcome to a thoughtfully designed collection of characterful homes in the heart of Gayton, a friendly Norfolk village surrounded by beautiful countryside. Built by a trusted local developer, each property offers a unique design, combining quality craftsmanship with modern, energy-efficient living. **A limited number of fully serviced building plots are also available, giving buyers the chance to work alongside the builder for a more bespoke finish.** With spacious layouts, premium features, and a welcoming community feel, this is a rare opportunity to own a truly individual home in a special location.

**NOTE: All Photos are example pictures taken of some of the completed homes to show the finish quality and some of the designs available.**

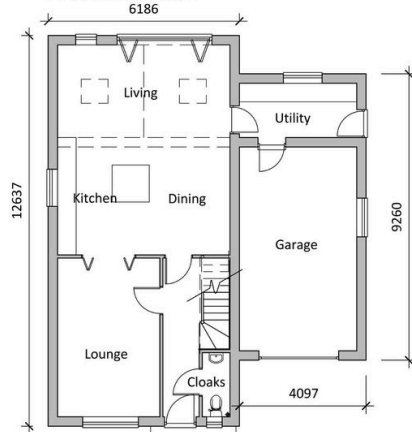
## Key Features

- Available as a 3 Bedroom for £425,000
- Available as a 4 Bedroom for £455,000
- High end finish
- Desirable village
- Choice of design
- Opportunity to work with builder
- Large garage
- Character design
- Local builder
- Call R&T to arrange a meeting with the builder

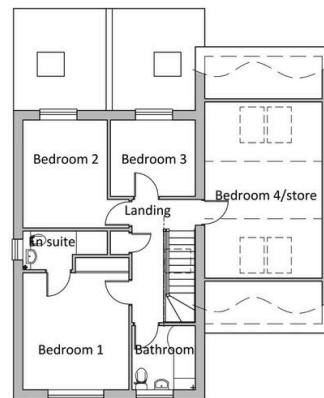
### *Type 'C' Floor plan - Howards Way*



Front Elevation



Ground Floor Layout



First Floor Layout

1. This drawing is Copyright of Russen & Turner Architectural Design and should only be used in connection with this Author's contract.  
2. This drawing has been produced for Planning and Building Regulation purposes only.  
3. It is the responsibility of the recipient of this drawing to ensure it has been printed at the correct scale using the scale reference for show.  
4. Do not use this drawing for measurement of quantities or measurements.  
5. Contractors and their sub-contractors are to check and verify all measurements and make on site prior to manufacture and commencement of work.  
6. Do not use digital dimensions.  
7. All dimensions to be brought to the Designer's immediate attention.  
SCALE REFERENCE - 50mm LINE 50mm