



Hazelbury Close, SW19

£1,495,000

Dexters



Hazelbury Close, SW19

A four double bedroom, three bathroom detached house complete with off street parking for four cars. Extended to the loft, rear and the side, this extensive residence, measuring near 2,400 square feet isn't one to miss.

The ground floor has two reception rooms to the front of the house, one set up as a cinema style room, with the other organised as a study, but beside the utility room, which lends the potential for this room to be a fifth bedroom with ensuite, with a few structural adjustments.

The rear of the house has been extended to the rear, with a Warendorf kitchen, Spekva wooden breakfast table and a graphite Neff double oven. The kitchen has been bespoke designed, with under floor heating throughout, bespoke large panel sliding doors and a gym developed from the integral garage.

The first floor and loft conversion have been remodelled and built in the most sympathetically symmetrical way to offer four double bedrooms of near equal sizes and three bathrooms, all with Hansgrohe fittings together with Duravit vanity units. Two of the bedrooms benefit from an ensuite.

Nestled in a quiet cul de sac of just twelve houses, a few hundred meters from Wimbledon town centre. The house is in the catchment and just a short stroll from Merton Park Primary School, rated outstanding.

Features

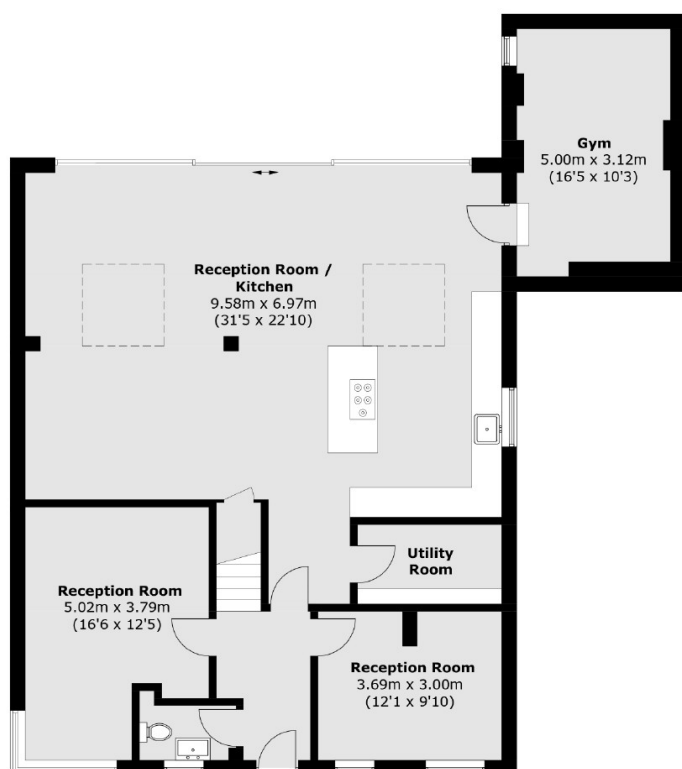
- Four/ Five Bedrooms
- Study And Gym
- Detached House
- Quiet Cul De Sac
- Fully Renovated And Extended
- Four Car Off Street Parking



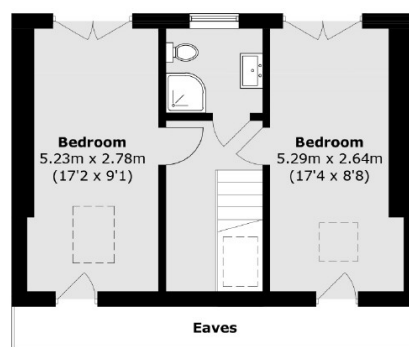




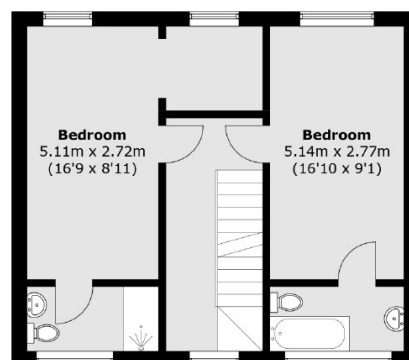
Hazelbury Close, London, SW19



Ground Floor



Second Floor



First Floor

Total area (approx.): 222.1 sq. m (2,390.6 sq. ft)
(Excluding Eaves)