



Price
£250,000

Freehold

2x  2x  1x 

**Kingfisher Close,
Upstreet, Canterbury,
Kent, CT3**

OVER 60?

Secure this property
for up to **59% less!**

Wards
Helping you move forwards



Main features

- Beautifully presented throughout, ready for you to move straight into
- En suite to the main bedroom
- Two allocated parking bays
- Located in the popular village of Short drive to Canterbury city centre and the Kent coast
- Private low maintenance rear garden backing onto farmers fields

Accommodation

GROUND FLOOR

Entrance Hallway
Cloakroom
Kitchen: 11'2 x 7'1 (3.41m x 2.16m)
Lounge/Diner: (L-shaped) 14'11 x 13'8 (4.55m x 4.17m) plus 7'1 x 6'4 (2.16m x 1.93m)

FIRST FLOOR

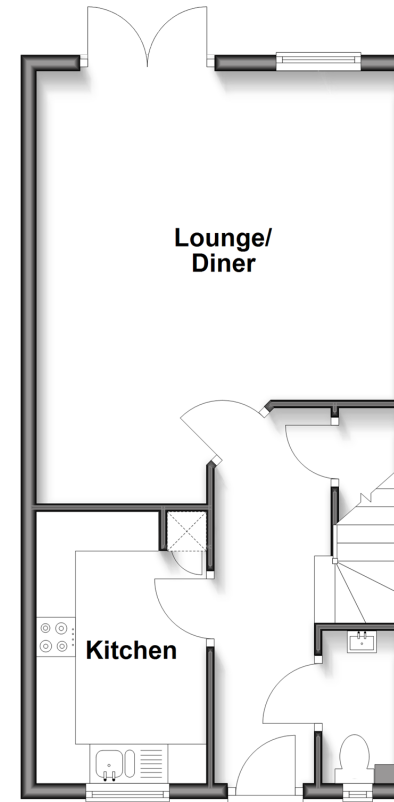
Landing
Bedroom 1: 14'11 x 13'7 (4.55m x 4.14m)
En Suite: 8'10 x 6'0 (2.69m x 1.83m)
Bedroom 2: 11'3 x 7'1 (3.43m x 2.16m)
Bathroom: 7'5 x 6'4 (2.26m x 1.93m)

OUTSIDE

Front Garden
Allocated Parking Spaces x 2
Rear Garden

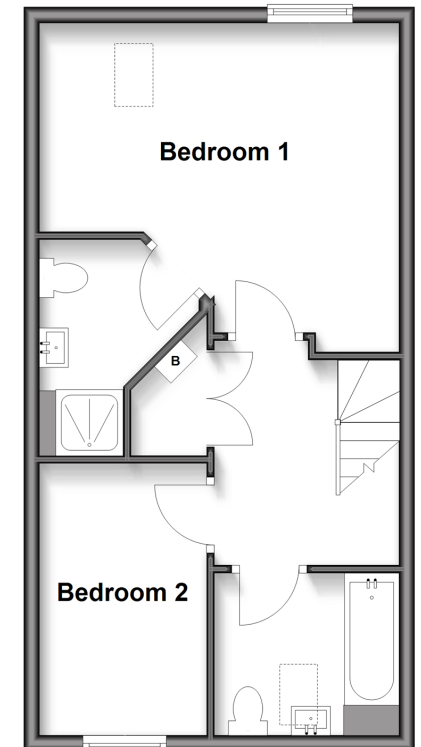
Ground Floor

Approx. 41.7 sq. metres (448.6 sq. feet)



First Floor

Approx. 41.7 sq. metres (448.6 sq. feet)



Call Canterbury - 01227 766669 ■ wardsforkent.co.uk

- Legal advice should be taken to verify fixtures/fittings, planning, alterations and/or lease details
- Appliances & services are untested, dimensions are approximate and floor plans are not to scale
- Through a Homewise Home For Life Plan people aged 60+ can secure this property for up to 59% less, by purchasing a Lifetime Lease.



10344332/20250701/TG/JT