



Gore Road, SW20

£1,750 Per calendar month

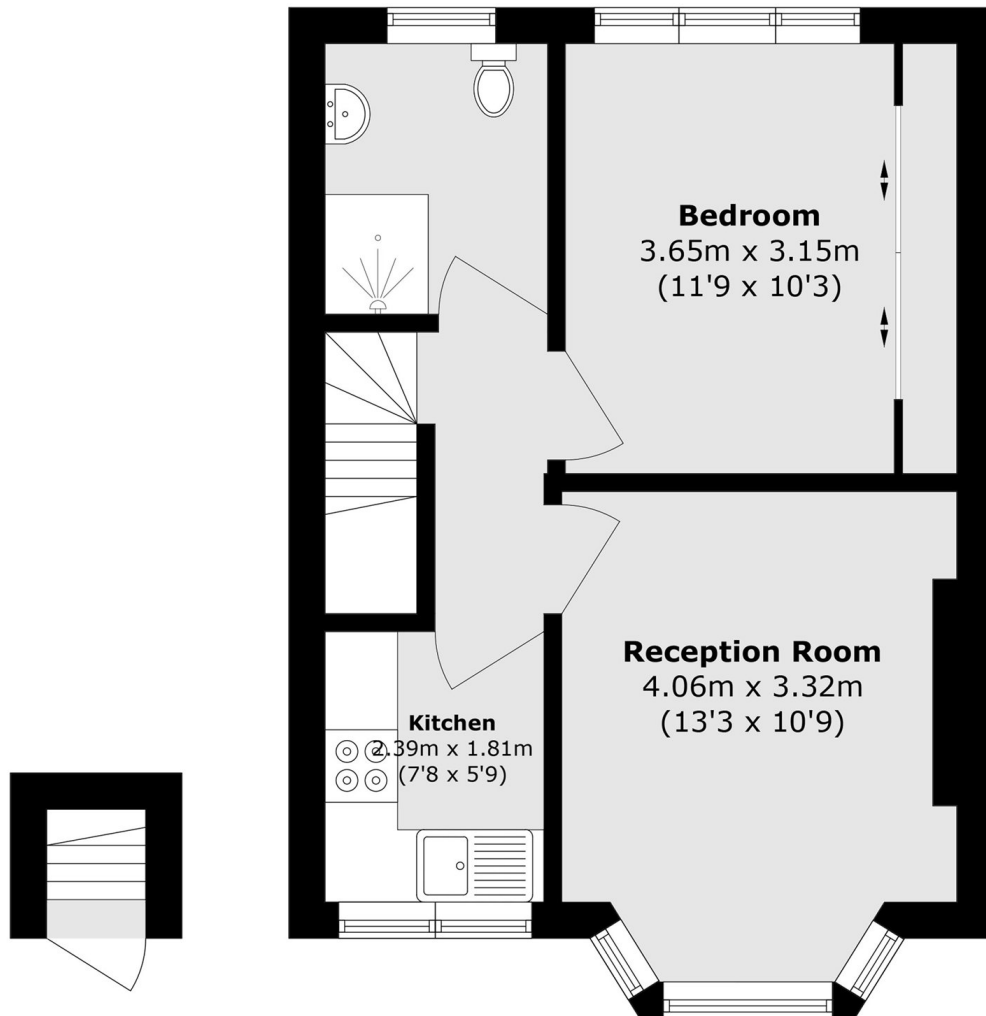
This large one bedroom flat is on the first floor (top floor) of this period conversion in the heart of Raynes Park. The property has a bright reception room, a separate modern kitchen and a fully tiled shower room that is perfect for a professional couple or single.

Gore Road is a nice tree lined street with easy access in and out of London. You are close to parks, gyms, restaurants and coffee shops.

Features

- One Bedroom
- Top Floor
- Modern
- Period Conversion
- Separate Kitchen
- Close to Transport Links

Gore Road, London, SW20



Ground Floor

First Floor

Total area (approx.): 39.0 sq. m (419.8 sq. ft)