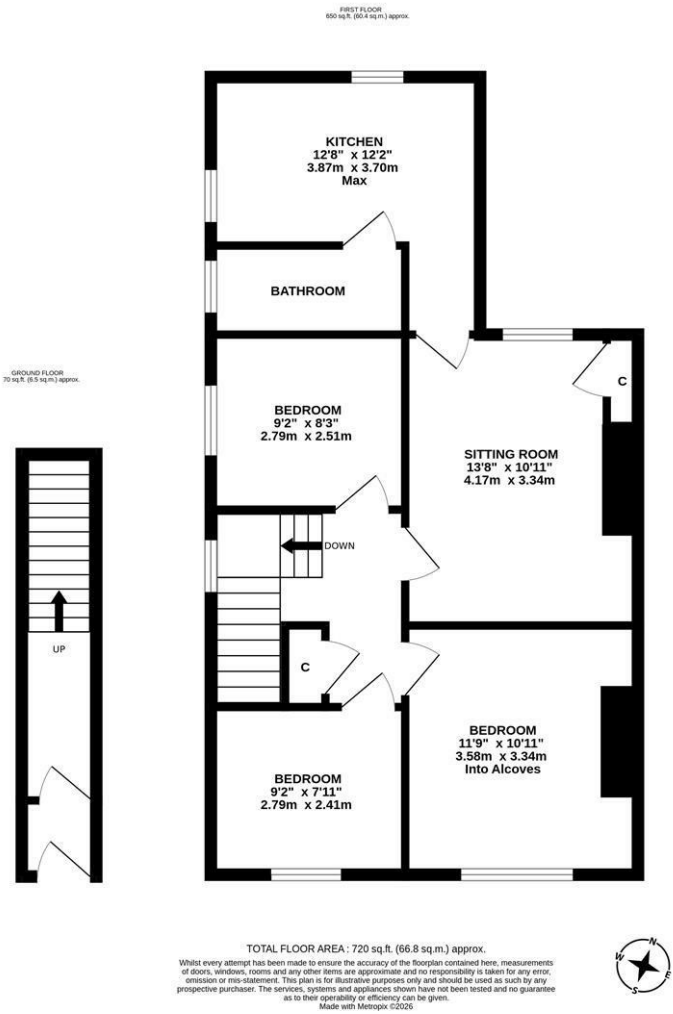




NO ONWARD CHAIN! This three bedroom first floor flat is ideally located on Marleen Avenue, Heaton. Marleen Avenue, tucked just off Rothbury Terrace, is ideally placed within Heaton with its countless cafe's, bars, restaurants and transport lights and also benefits from a green aspect to the front.

The accommodation briefly comprises: entrance porch through to entrance hall with stairs to first floor landing with storage cupboard; sitting room with part alcove storage; kitchen with fitted units and work surfaces together with dual aspect windows and spot lighting; bathroom with three piece suite; three bedrooms. Externally a shared rear garden laid mainly to lawn. With no onward chain, early viewings are advised.

Upper Floor Flat | 720 Sq ft (66.8m2) | Three Bedrooms | Sitting Room | Kitchen | Bathroom | Front & Rear Shared Rear Garden | GCH & DG | Leasehold - Tyneside Lease with Peppercorn Rent - 992 Years Remaining | Council Tax Band A | EPC: Tbc



Offers Over £165,000

IMPORTANT NOTE: These particulars and the descriptions and measurements herein do not constitute representation and whilst every effort has been made to ensure accuracy, this cannot be guaranteed.

