



**Laithwaite Close, Leicester LE4 1BX**

**welcome to**

## **Laithwaite Close, Leicester**

One bedroom end terraced bungalow on Laithwaite Close, Anstey Heights. Practical layout with porch, living room, kitchen, bathroom and bedroom. A conservatory off the bedroom provides additional space and access to the rear garden

### **Entrance Hall**

Door to the side.

### **Lounge**

Double glazed window to the front and hard wood flooring.

### **Kitchen**

Fitted kitchen comprising of wall and base units with work surfaces over, sink drainer unit, tiled flooring, integrated oven, induction hob, dishwasher, washing machine, tumble dryer and fridge freezer. Double glazed window to the front and to the side.

### **Double Bedroom**

Patio door leading to the conservatory, fitted wardrobe and carpeted.

### **Bathroom**

Double glazed window to the side, bath with shower over, WC and vanity hand wash basin.

### **Exterior Of Property**

Externally the property occupies a corner plot. Gated access to the side leads to a low maintenance paved garden with brick wall and fenced boundaries. There is also a driveway located to the side providing off road parking.





***view this property online*** [williamhbrown.co.uk/Property/LHS120814](http://williamhbrown.co.uk/Property/LHS120814)



welcome to

## Laithwaite Close, Leicester

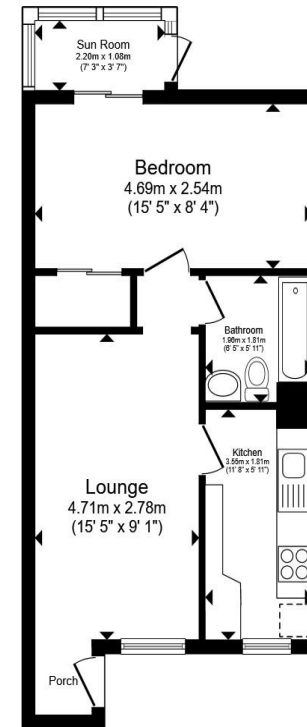
- One bedroom end terraced bungalow
- Practical single level layout with central living room
- Conservatory leading to the rear garden
- Rear garden
- Driveway providing off road parking

Tenure: Freehold EPC Rating: C

Council Tax Band: A

offers over

**£170,000**



Ground Floor

Total floor area 42.6 m<sup>2</sup> (459 sq.ft.) approx

This floor plan is for illustrative purposes only. It is not drawn to scale. Any measurements, floor areas (including any total floor area), openings and orientation are approximate. No details are guaranteed, they cannot be relied upon for any purpose and they do not form part of any agreement. No liability is taken for any error, omission or misstatement. A party must rely upon its own inspection(s). Powered by [www.propertybox.io](http://www.propertybox.io)



**view this property online** [williamhbrown.co.uk/Property/LHS120814](http://williamhbrown.co.uk/Property/LHS120814)



Property Ref:  
LHS120814 - 0004

1. MONEY LAUNDERING REGULATIONS Intending purchasers will be asked to produce identification documentation at a later stage and we would ask for your co-operation in order that there is no delay in agreeing the sale. 2. These particulars do not constitute part or all of an offer or contract. 3. The measurements indicated are supplied for guidance only and as such must be considered incorrect. Potential buyers are advised to recheck measurements before committing to any expense. 4. We have not tested any apparatus, equipment, fixtures or services and it is in the buyers interest to check the working condition of any appliances. 5. Where an EPC, or a Home Report (Scotland only) is held for this property, it is available for inspection at the branch by appointment. If you require a printed version of a Home Report, you will need to pay a reasonable production charge reflecting printing and other costs. 6. We are not able to offer an opinion either written or verbal on the content of these reports and this must be obtained from your legal representative. 7. Whilst we take care in preparing these reports, a buyer should ensure that his/her legal representative confirms as soon as possible all matters relating to title including the extent and boundaries of the property and other important matters before exchange of contracts.

William H Brown is a trading name of Sequence (UK) Limited which is registered in England and Wales under company number 4268443, Registered Office is Cumbria House, 16-20 Hockliffe Street, Leighton Buzzard, Bedfordshire, LU7 1GN. VAT Registration Number is 500 2481 05.

  
william h brown



**0116 251 4131**



[Leicester@williamhbrown.co.uk](mailto:Leicester@williamhbrown.co.uk)



16-18 Halford Street, LEICESTER, Leicestershire,  
LE1 1JB



[williamhbrown.co.uk](http://williamhbrown.co.uk)