



Connells

Barn Piece
Quinton



Property Description

Situated on the popular Barn Piece development in B32, this spacious three-bedroom home offers well-balanced accommodation ideally suited to first-time buyers and families alike.

The ground floor comprises a welcoming entrance porch and hallway, a generous lounge to the front, and an open-plan kitchen/diner to the rear, providing a sociable and practical space for everyday living. A separate utility area adds further convenience, along with a ground floor W.C.

Upstairs, the property offers three well-proportioned bedrooms, including a spacious principal bedroom, alongside a family bathroom. The layout is functional and well suited to modern living requirements.

Externally, the property benefits from residential parking to the front, and a private rear garden space ideal for relaxing or entertaining.

The location is particularly convenient, with easy access to local shops, schools, transport links and nearby green spaces, as well as straightforward routes into Birmingham city centre and surrounding areas.

Approach

Set back behind a private paved front garden

Lounge

Window to front, panelled radiator, feature fireplace, ceiling light points, electrical points

Kitchen/Diner

Matching wall and base units, window to rear, panelled radiator, part tiled, ceiling light points, electrical points, door to utility

Utility

Window to side, panelled radiator, electrical point, ceiling light point, rear door to garden

W.C.

Low flush w.c, hand wash basin, panelled radiator

Bedroom 1

Window to front, panelled radiator, built in wardrobes, ceiling light point, electrical point

Bedroom 2

Window to rear, panelled radiator, ceiling light point, electrical point

Bedroom 3

Window to rear, panelled radiator, built in wardrobe, ceiling light point, electrical point

Bathroom

Window to rear, low flush w.c, hand wash basin, walk in shower, panelled radiator, part tiled, ceiling light point

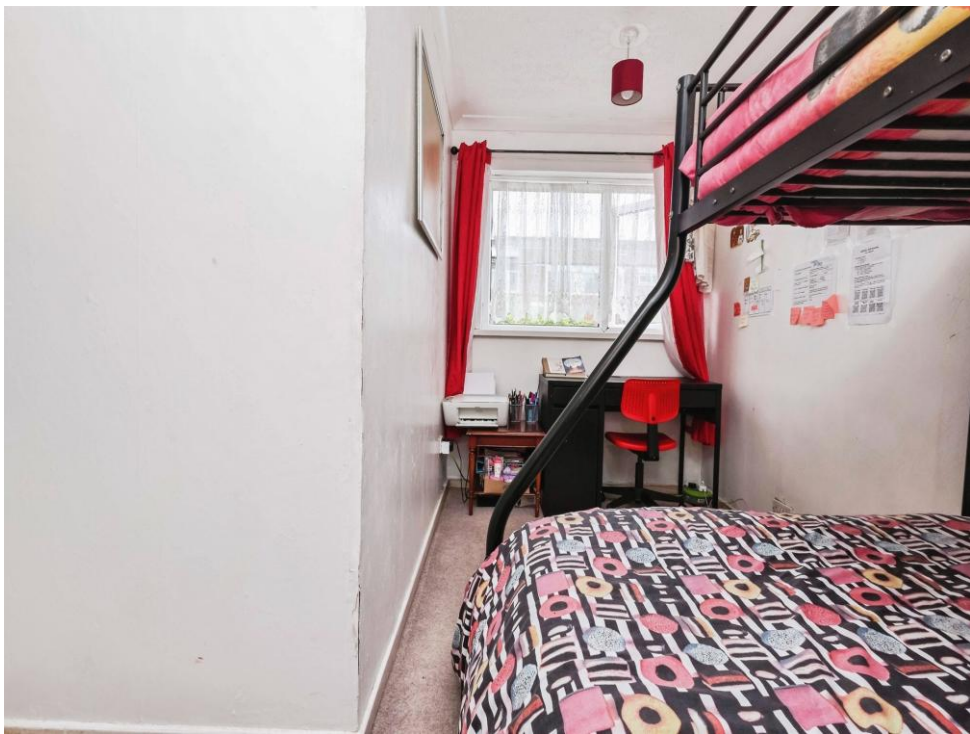
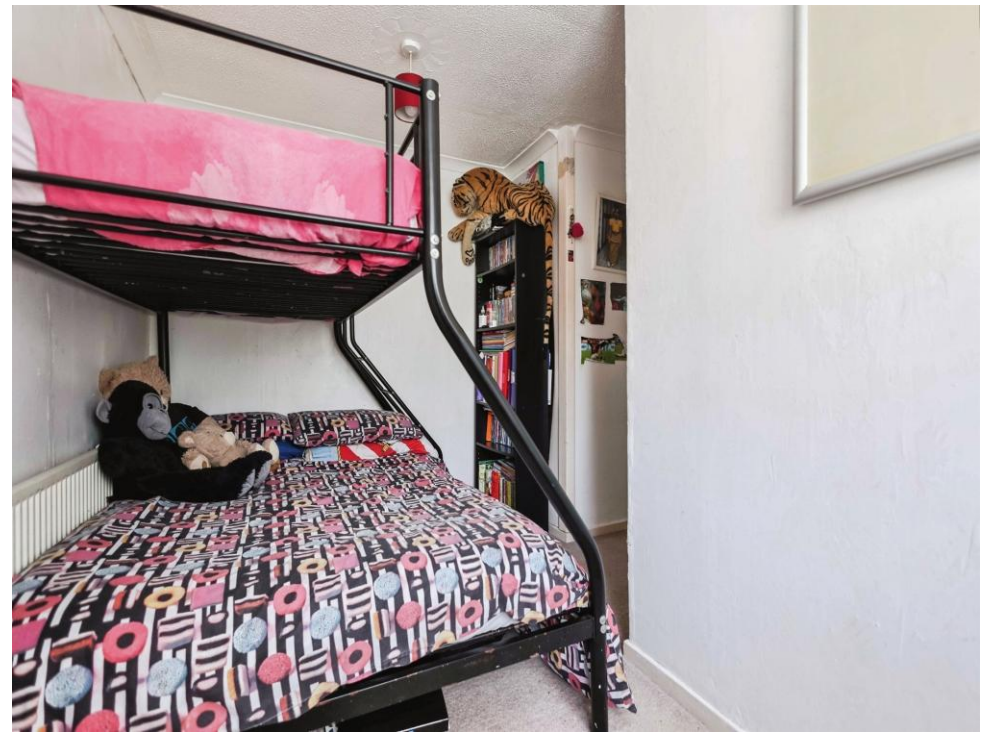
Garden

Paved private garden, fence surrounding

Agents Note

This property is non-standard construction. Please call the branch on 0121 426 2800 for more information.









Total floor area 84.7 m² (912 sq.ft.) approx

This floor plan is for illustrative purposes only. It is not drawn to scale. Any measurements, floor areas (including any total floor area), openings and orientation are approximate. No details are guaranteed, they cannot be relied upon for any purpose and they do not form part of any agreement. No liability is taken for any error, omission or misstatement. A party must rely upon its own inspection(s). Powered by www.propertybox.io



To view this property please contact Connells on

T 0121 426 2800
E harborne@connells.co.uk

158 High Street Harborne
 BIRMINGHAM B17 9QE

EPC Rating: C Council Tax
 Band: B

Tenure: Freehold

view this property online connells.co.uk/Property/HBO310864



1. MONEY LAUNDERING REGULATIONS Intending purchasers will be asked to produce identification documentation at a later stage and we would ask for your co-operation in order that there will be no delay in agreeing the sale. 2. These particulars do not constitute part or all of an offer or contract. 3. The measurements indicated are supplied for guidance only and as such must be considered incorrect. Potential buyers are advised to recheck measurements before committing to any expense. 4. We have not tested any apparatus, equipment, fixtures, fittings or services and it is in the buyers interest to check the working condition of any appliances.

Connells Residential is registered in England and Wales under company number 1489613, Registered Office is Cumbria House, 16-20 Hockliffe Street, Leighton Buzzard, Bedfordshire, LU7 1GN. VAT Registration Number is 500 2481 05.

See all our properties at www.connells.co.uk | www.rightmove.co.uk | www.zoopla.co.uk

Property Ref: HBO310864 - 0002