



Elm Road, KT2

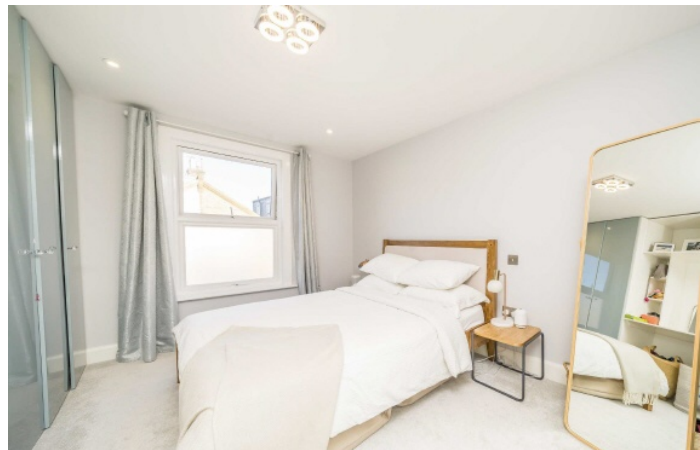
£4,000 Per calendar month

Stunning refurbished 4 bedroom family home boasting a generous open plan kitchen/breakfast room including fitted appliances, island and bi-fold doors to the private rear garden.

Elm Road is a popular tree lined residential road ideally located for Norbiton station, the River Thames and Richmond Park's Kingston Gate. Access to both Richmond and Kingston centres are incredibly convenient and the property falls within the catchment for a choice of private and Ofsted rated Good and Outstanding state schools.

Features

- Four Bedrooms
- Two Bathrooms
- Period Home
- Recently Refurnished
- Fantastic School Catchment
- Private Garden



Elm Road, KT2



Elm Road,
Kingston Upon Thames, KT2

Dexters

Kingston
4 Wood Street
Kingston Upon Thames
KT1 1TG
Lettings
020 8546 3003

Energy Rating: . We aim to make our particulars both accurate and reliable. However they are not guaranteed; nor do they form part of an offer or contract. If you require clarification on any points then please contact us, especially if you're traveling some distance to view. Please note that appliances and heating systems have not been tested and therefore no warranties can be given as to their good working order.



dexters.co.uk