



Birches Head Stoke-On-Trent ST1 2ND Offers In Excess Of £130,000

On Turner Street your journey could start
With a beautiful house full of heart
A blank canvass ready to inspire
Building the home that you desire
A spacious lounge for you to relax and unwind
The dining kitchen where food comes to mind
Two bedrooms await calm and bright
Where pillows catch the drifting night
A garden whispers just outside
Where leaves and laughter gently hide
If its time to find something that's yours
Step inside and open the doors



Entrance Hallway

UPVC Entrance door , tiled flooring , stairs off to first floor.

Lounge

UPVC double glazed window to the front , coved ceiling , radiator.

Breakfast Kitchen

UPVC double glazed window to the rear , range of high gloss eye and base units with work tops over , built in oven hob and extractor fan , integral dishwasher and washing machine , tiled flooring , dining area , under stairs storage cupboard.

UPVC double glazed french doors leading out into rear garden.

Landing

Loft access

Master Bedroom

UPVC double glazed windows to the front , built in high gloss his and hers wardrobes and storage , radiator

Bedroom Two

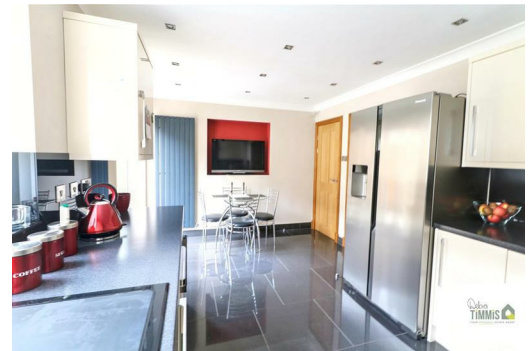
UPVC double glazed window to the rear, radiator

Bathroom

UPVC double glazed window to the rear , White suite comprising of closed coupled WC , vanity unit incorporating a wash hand basin and spa bath with shower over, heated towel rail.

External

Paved patio area with steps leading up to low maintenance artificial grassed area with attractive borders , garden shed.



Energy Efficiency Rating	
	Potential
Very energy efficient - lower running costs	
(92 plus) A	
(81-91) B	
(69-80) C	
(55-68) D	
(39-54) E	
(21-38) F	
(1-20) G	
Not energy efficient - higher running costs	
England & Wales	EU Directive 2002/91/EC

Environmental Impact (CO ₂) Rating	
	Potential
Very environmentally friendly - lower CO ₂ emissions	
(92 plus) A	
(81-91) B	
(69-80) C	
(55-68) D	
(39-54) E	
(21-38) F	
(1-20) G	
Not environmentally friendly - higher CO ₂ emissions	
England & Wales	EU Directive 2002/91/EC

Debra Timmis Estate Agents for themselves and for the vendors or lessors of this property whose agents they are give notice that (i) the particulars are set out as a general outline only for the guidance of intending purchasers or lessees, and do not constitute, nor constitute part of an offer or contract; (ii) all descriptions, dimensions, references to condition and necessary permissions for use and occupation, and other details are given without responsibility and intending purchasers or tenants should not rely on them as statements or representations of fact but must satisfy themselves by inspection or otherwise as to the correctness of each of them; (iii) no person in the employment of Debra