



## 21 Soar House St. Marys Road

, Market Harborough, LE16 7GR

**£170,000**

A delightful penthouse apartment situated in a quiet rear of block position whilst being just a short walk from the main line railway station and town centre amenities. The accommodation comprises: Hall, open plan lounge and fitted kitchen, master bedroom with large South facing balcony, second double bedroom and bathroom. There is also secure allocated underground parking. Available mid July.

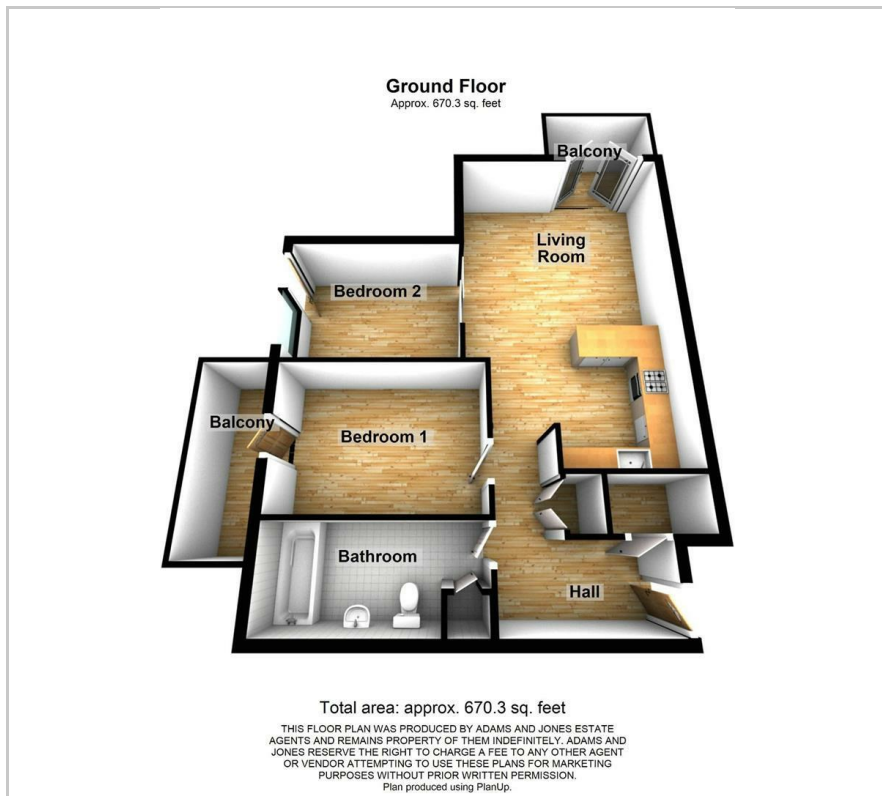
- Spacious penthouse apartment
- Ideally situated for town centre
- Two double bedrooms
- South facing balcony
- Secure parking

### Viewing

Please contact our Market Harborough Sales Office on 01858 461888 or our Lutterworth office on 01455 888670 if you wish to arrange a viewing appointment for this property or require further information.



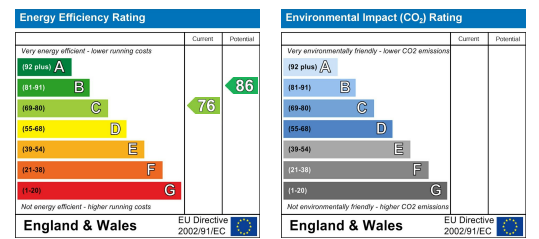
# Floor Plan



# Area Map



# Energy Efficiency Graph



These particulars, whilst believed to be accurate are set out as a general outline only for guidance and do not constitute any part of an offer or contract. Intending purchasers should not rely on them as statements of representation of fact, but must satisfy themselves by inspection or otherwise as to their accuracy. No person in this firm's employment has the authority to make or give any representation or warranty in respect of the property.