



**POOLE
TOWNSEND**

2 Blenket Close, Allithwaite

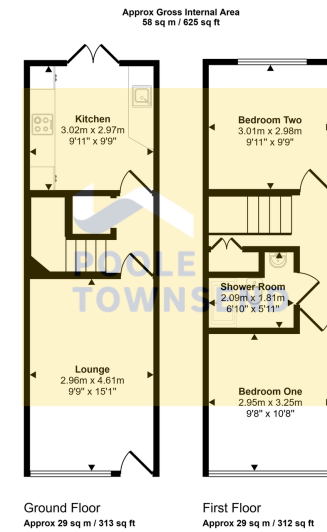
£130,000

🛏️ 2 🚿 1 🚗 1



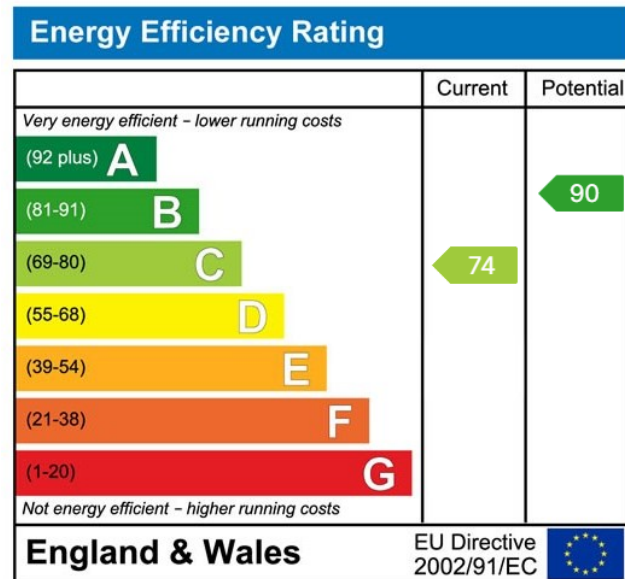
- Located in the sought-after village of Allithwaite
- Bright and spacious lounge/diner with remote-controlled electric fire
- Two well-proportioned double bedrooms
- Ideal for first-time buyers, couples, or investment/second home
- Freehold
- Beautifully modernised two-bedroom mid-terrace home
- Contemporary kitchen with integrated appliances
- Stylish, modern shower room
- Close to local pub, countryside walks, and the Lake District National Park
- No onward chain for a smooth purchase





This floorplan is only for illustrative purposes and is not to scale. Measurements of rooms, doors, windows, and any items are approximate and no responsibility is taken for any error, omission or mis-statement. Icons of items such as bathroom suites are representations only and may not look like the real items. Made with Made Snappy 360.

Nestled in the heart of the popular village of Allithwaite, this beautifully modernised two-bedroom mid-terrace offers generous, light-filled living spaces across two floors and is offered with no onward chain. Perfect for first-time buyers, couples, or as a rental investment/second home, the property combines contemporary comfort with a charming village setting. Inside, you'll find a lounge/diner with a remote-controlled electric fire and a contemporary kitchen with integrated appliances. Upstairs are two double bedrooms and a modern shower room. Conveniently located near a welcoming local pub and scenic countryside paths, with the Lake District National Park within easy reach, this home is ready to move into and offers the ideal blend of style, convenience, and rural charm.



Visit us at
www.pooletownsend.co.uk
enquiries@pooletownsend.co.uk

We are open
 Monday – Friday 9.00 – 5.00
 Saturday 9.00 – 1.00

Barrow 01229 811811
 Ulverston 01229 588111
 Grange 015395 33316
 Kendal 01539 734455
 Milnthorpe 015395 62044