



1 Southcroft, Englefield Green, TW20 0QG

£599,950

1 Southcroft, Englefield Green, TW20 0QG

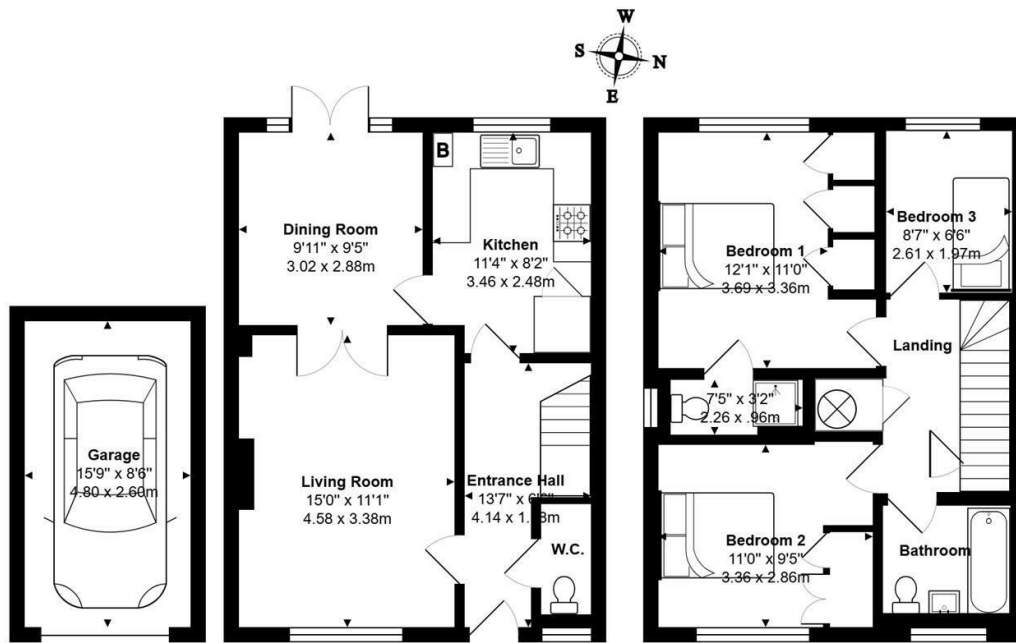
This charming three bedroom link-detached house, built around 1995 by Runnymede Homes, offers a good size and comfortable living space in a peaceful cul-de-sac location. Perfectly suited for families, the property features two generously-sized reception rooms, ideal for both relaxing and entertaining. Upstairs, you'll find three well-proportioned bedrooms, including a master with its own en suite shower room for added convenience.

The family bathroom serves the other bedrooms, whilst there is an addition toilet in the downstairs cloakroom.

The home also benefits from a good size driveway, providing off-road parking, and a detached garage offering additional parking or storage, with light & power. The quiet, residential location ensures privacy and tranquility, whilst being well-connected for easy access to local amenities, schools, transport links and only about 15-20 minutes' drive to Heathrow. This will be ideal for those looking to move quickly into a 'chain free' house yet still offering the potential to make it their own. EPC Rating: C.



Floor Plan



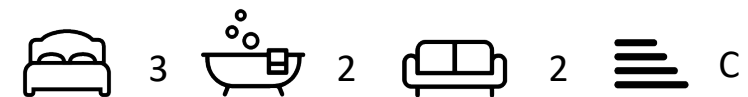
Total Area: 923 ft² ... 85.8 m² (excluding garage)



Features

- Linked-Detached House
- Three Bedrooms
- Family Bathroom
- Downstairs Cloakroom
- Drive & Garage
- Built approx. 1995
- En Suite Shower Room
- Two Reception Rooms
- Gas Central Heating
- No Chain

10 St Judes Road, Englefield Green, Surrey TW20 0BY
Tel 01784 433696
sales@aspenestateagents.co.uk



Tenure - Freehold Council Tax Band - F

