

for sale

offers in excess of **£250,000**



Cheddar Road SWINDON SN25 3HE

NO ONWARD CHAIN! Located in the well-established and popular residential area of MOREDON NORTH SWINDON this spacious three-bedroom semi-detached home. **TWO DOUBLE BEDROOMS. DRIVEWAY PARKING**



Cheddar Road SWINDON SN25 3HE

Ground Floor Accommodation

Entrance Hall

Double glazed door to the side aspect. Double glazed window to the rear aspect. Stairs rising to the first floor accommodation. Door to the lounge. Electric heater.

Lounge

25' 10" x 10' 11" (7.87m x 3.33m)

Two double glazed windows to the front aspect. Gas fire with stone built surround. Archway to the kitchen.

Kitchen

11' 11" x 7' (3.63m x 2.13m)

Double glazed window to the rear aspect. Fully fitted kitchen with a range of base and wall mounted units comprising of cupboards and drawers. Sink with drainer and mixer tap. Space for under counter fridge. Space and plumbing for washing machine.

Inner Hall

Double glazed door to the rear garden. Door to the shower room.

Shower Room

Obscure double glazed window to the side aspect. Two piece suite comprising of Shower and WC.



First Floor Accommodation

First Floor Landing

Double glazed window to the rear aspect. Loft access. Access to all bedrooms and family bathroom.

Bedroom One

13' 9" x 11' (4.19m x 3.35m)

Double glazed window to the front aspect. Built-in-wardrobes

Bedroom Two

11' 11" x 11' (3.63m x 3.35m)

Double glazed window to the front aspect. Built-in-wardrobes. Airing cupboard.

Bedroom Three

10' 7" x 6' 11" (3.23m x 2.11m)

Double glazed window to the rear aspect.

Bathroom

Obscure double glazed window to the rear aspect. Three piece suite comprising of wash hand basin, pedestal wash hand basin and panelled bath with shower over.

External Features

Garden

Fenced boundaries. Caravan staying in situ. Decking to the rear aspect. Laid to lawn and stone. Mature shrubs and bushes.

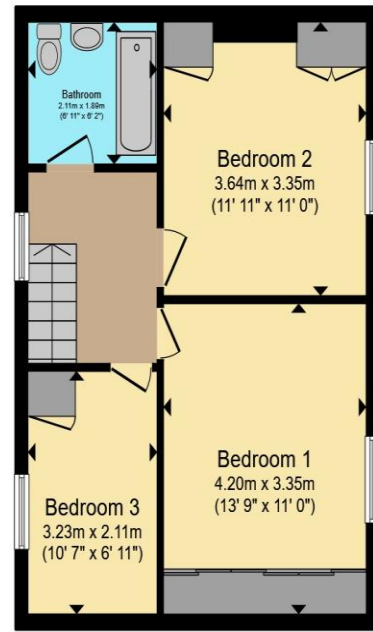
Parking

Driveway parking for multiple cars





Ground Floor



First Floor

Total floor area 97.3 m² (1,047 sq.ft.) approx

This floor plan is for illustrative purposes only. It is not drawn to scale. Any measurements, floor areas (including any total floor area), openings and orientation are approximate. No details are guaranteed, they cannot be relied upon for any purpose and they do not form part of any agreement. No liability is taken for any error, omission or misstatement. A party must rely upon its own inspection(s). Powered by www.propertybox.io



To view this property please contact Connells on

T 01793 708050
E swindonnorth@connells.co.uk

Unit B11 North Swindon District Centre Thamesdown Drive
 SWINDON SN25 4AN

Property Ref: SDN315014 - 0002

Tenure:Freehold EPC Rating: Awaited

Council Tax Band: A

view this property online
connells.co.uk/Property/SDN315014



1. MONEY LAUNDERING REGULATIONS Intending purchasers will be asked to produce identification documentation at a later stage and we would ask for your co-operation in order that there will be no delay in agreeing the sale. 2. These particulars do not constitute part or all of an offer or contract. 3. The measurements indicated are supplied for guidance only and as such must be considered incorrect. Potential buyers are advised to recheck measurements before committing to any expense. 4. We have not tested any apparatus, equipment, fixtures, fittings or services and it is in the buyers interest to check the working condition of any appliances.

Connells Residential is registered in England and Wales under company number 1489613, Registered Office is Cumbria House, 16-20 Hockliffe Street, Leighton Buzzard, Bedfordshire, LU7 1GN. VAT Registration Number is 500 2481 05.

see all our properties at www.connells.co.uk | www.rightmove.co.uk | www.zoopla.co.uk