



## Kingsmead Avenue, TW16

### £899,950

An extended four bedroom, three bathroom detached house with off-street parking. The property is smartly presented throughout and would be ideal for an upsizing family looking for their forever home.

Kingsmead Avenue is a highly sought after location, everything Sunbury Village has to offer is on your doorstep including the local shops, Sunbury Park, the famous 'Walled Garden' and the River Thames and riverside pubs.

### Features

- Detached
- Four Double Bedrooms
- Three Bathrooms
- Utility Room
- Off-Street Parking
- Planning Permission to Extend





## Kingsmead Avenue, TW16

On the ground floor there is a welcoming entrance hallway, a large front reception room, a generous open plan kitchen and dining room with bi-folding doors opening out on to the rear garden. There is also the added bonuses of a study, a home gym, a utility room and a shower room.

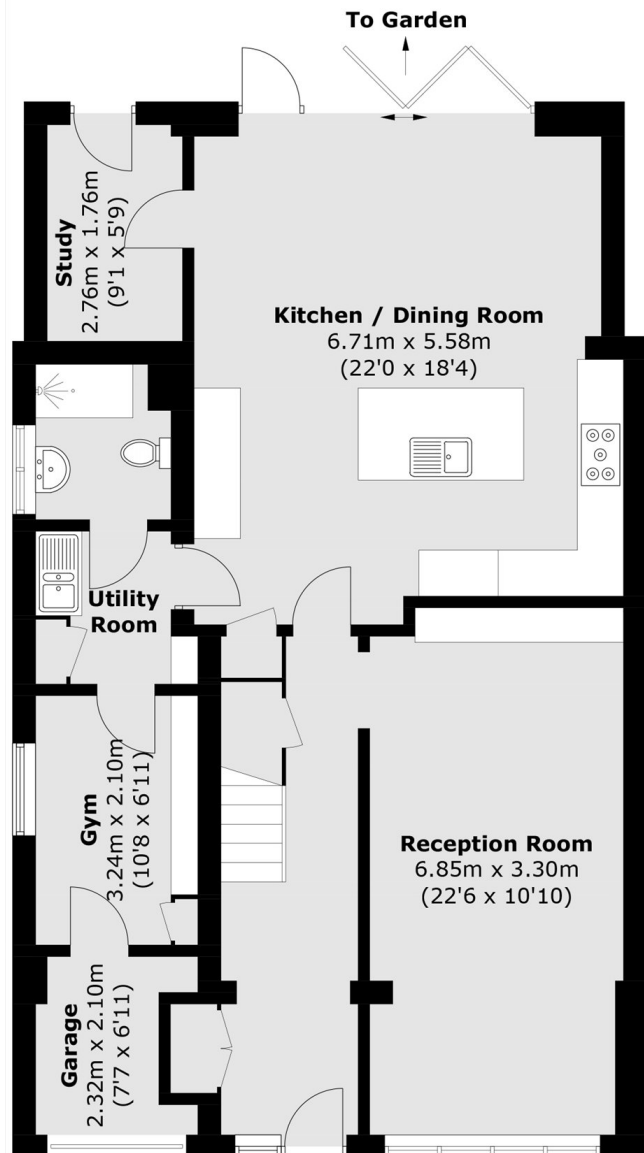
On the first floor there is a master bedroom with built in storage and an en suite shower room, three additional bedrooms and a family bathroom.

To the rear there is a great garden with an outdoor kitchen which is perfect for entertaining friends and family. To the front there is off-street parking for two/three cars.

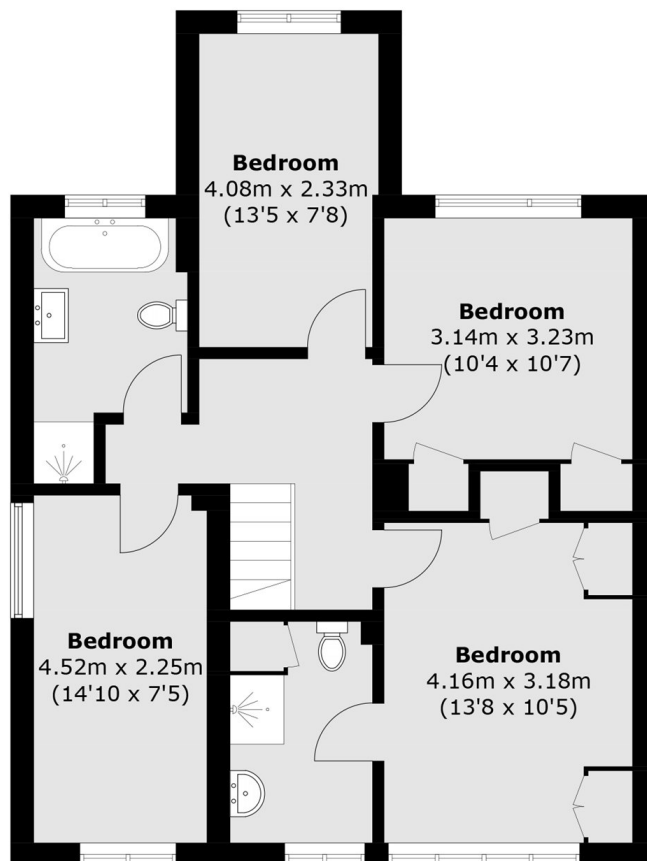




# Kingsmead Avenue, Sunbury-On-Thames, TW16



**Ground Floor**



**First Floor**

Total area (approx.): 168.6 sq. m (1,814.7 sq. ft)  
(Including Garage)