



270 Southport Road, Lydiate

Liverpool

£290,000

270 Southport Road

Lydiate, Liverpool

Three-bedroom semi in Lydiate with two reception rooms, modern kitchen, garden, off-road parking, and downstairs WC. Bright, neutral décor. Ultrafast broadband. Freehold. Council Tax Band B.
Council Tax band: B

Tenure: Freehold

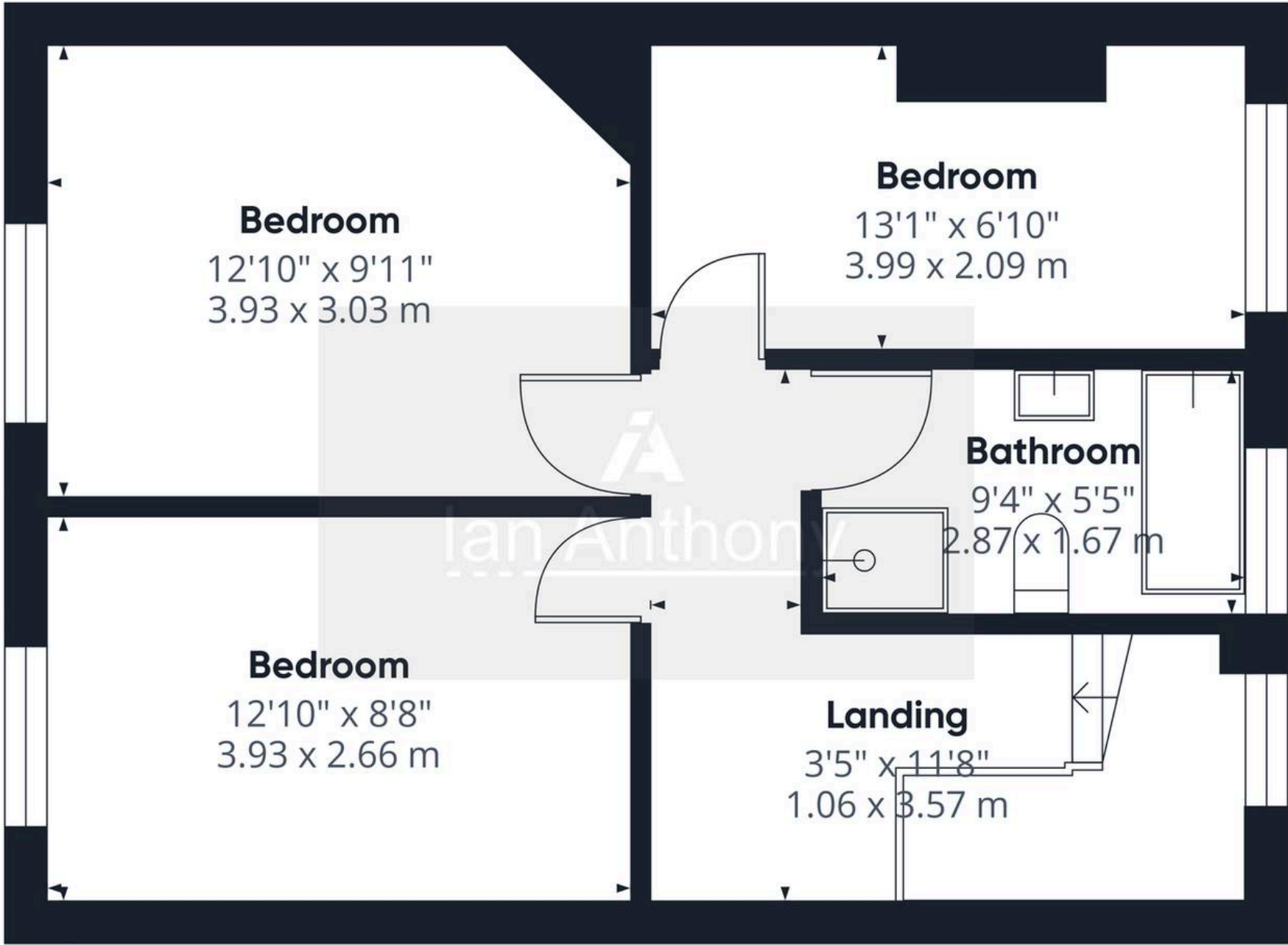
EPC Energy Efficiency Rating: D

EPC Environmental Impact Rating: D

- Desirable Lydiate village location
- Bright airy interiors throughout
- Three well proportioned bedrooms
- Cosy living room with log burner
- Dining room with feature fireplace
- Modern shaker style kitchen
- Convenient downstairs WC
- Driveway parking







Approximate total area⁽¹⁾

446 ft²
41.4 m²

(1) Excluding balconies and terraces

Calculations reference the RICS IPMS 3C standard. Measurements are approximate and not to scale. This floor plan is intended for illustration only.

GIRAFFE360



Floor 1



IAN ANTHONY

5 Burscough Street, Ormskirk - L39 2EG

01695580888

enquiries@iananthonyestates.co.uk

iananthonyestates.co.uk/

