

**BuckleyBrown**  
ESTATE AGENTS

£197,000

Parkgate Close, New Ollerton,  
Newark,

Welcome to **BuckleyBrown**, where every home is carefully presented, so you can explore with clarity and confidence.

**BuckleyBrown**  
ESTATE AGENTS

"A superb opportunity to acquire a beautifully presented three-bedroom detached new-build home, offering stylish and spacious accommodation ideal for modern family living. Positioned within a popular contemporary development, this move-in-ready property combines practicality, comfort, and

Jasmine Hynes, Valuer



## Ready for its next chapter

*A beautifully presented three-bedroom detached new-build home, occupying a pleasant position within a modern development in New Ollerton.*

From the moment you arrive, the property impresses with its attractive appearance and inviting atmosphere. The stylish and thoughtfully designed accommodation is ideal for contemporary family living, featuring a spacious lounge, an impressive dining kitchen, and three well-proportioned bedrooms. Ready to move straight into, this superb home combines comfort, practicality, and modern style throughout.



## Step Inside

***Situated within a modern development in New Ollerton, this property is conveniently located close to local shops, schools, walking routes, and excellent commuter links. Offering spacious accommodation throughout, this home is ready to move straight into.***

Upon entering the property, you are welcomed into the entrance porch, which provides access to the convenient downstairs WC. From here, you enter the light and spacious living room, which flows seamlessly into the kitchen diner. The kitchen is fitted with a range of modern matching cabinetry complemented by work surfaces providing ample preparation space for cooking. There is also plenty of room for a dining table, while patio doors lead out to the rear garden, creating the perfect space for indoor-outdoor living and alfresco dining.

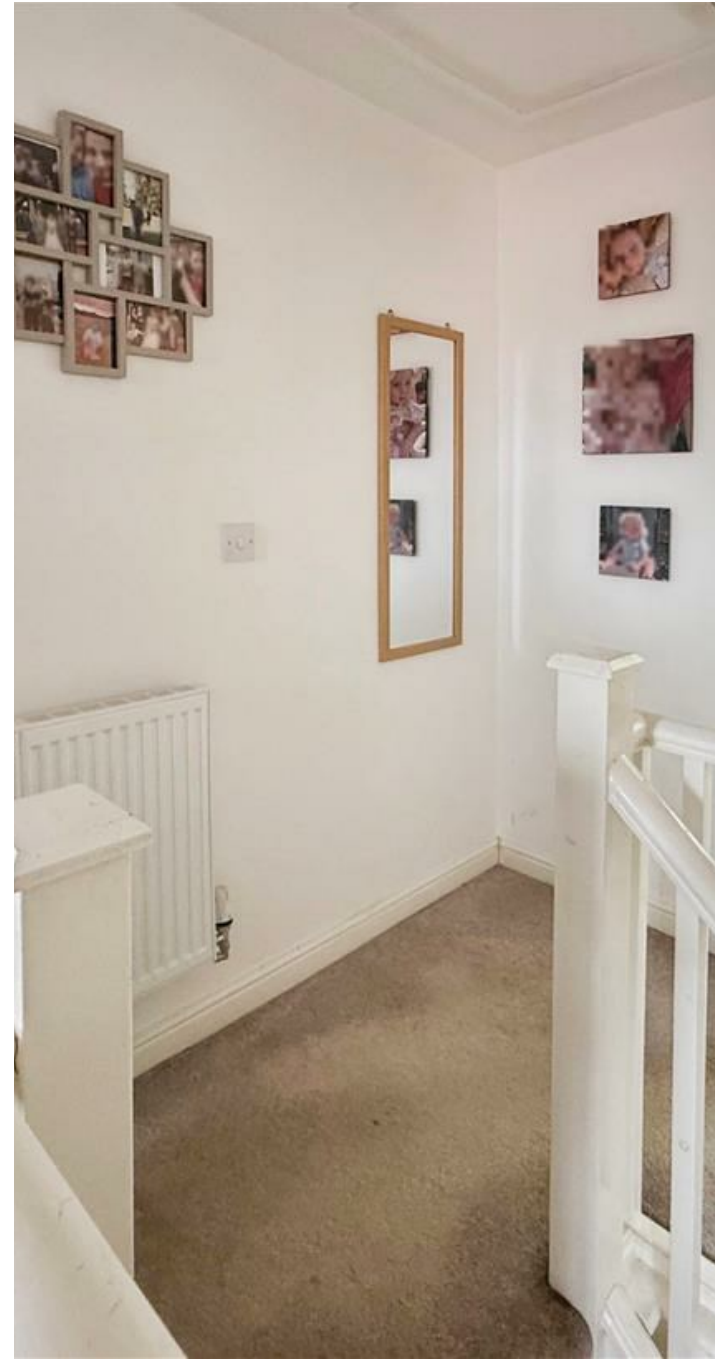
To the first floor, there are three well-proportioned bedrooms, all neutrally decorated and ready for the new owners to add their own personal touch. The family bathroom is fitted with a modern three-piece suite in white, comprising a bath, wash hand basin, and WC.

Externally, the property benefits from a driveway providing off-street parking, along with a garage. To the rear is an enclosed, low-maintenance garden featuring decorative gravel and mature borders.





**BuckleyBrown**  
ESTATE AGENTS







## Life in

***New Ollerton is a well-established town located in north Nottinghamshire, offering a practical and family-friendly setting with a strong sense of community. Situated between Mansfield and Retford, and close to the historic village of Edwinstowe, the town appeals to a wide range of buyers seeking convenience, accessibility and proximity to some of the region's most attractive countryside.***

The town itself provides a good range of everyday amenities, centred around its modern shopping area which includes supermarkets, independent retailers, cafés and essential services. Residents also benefit from local schools, healthcare facilities and leisure amenities, creating a well-served environment that is particularly attractive to families and those seeking a self-contained community.

Surrounded by open countryside and lying close to the edge of Sherwood Forest, New Ollerton is especially appealing to those who enjoy outdoor living. The nearby forest and surrounding woodland offer scenic walking and cycling routes, while the historic village of Edwinstowe and the renowned Sherwood Forest Visitor Centre provide additional opportunities for leisure and recreation. These natural surroundings enhance the town's appeal for those seeking a balance between convenience and green space.

Despite its semi-rural surroundings, New Ollerton remains well connected. The town benefits from straightforward access to the A614, providing convenient routes to Mansfield, Retford and Nottingham, as well as connections to the wider road network. This makes it a suitable location for commuters travelling across north Nottinghamshire and into neighbouring areas.

New Ollerton is particularly well suited to families, first-time buyers and downsizers alike – those seeking an accessible location with everyday amenities and excellent access to countryside. With its combination of community atmosphere, practical facilities and proximity to Sherwood Forest, it continues to be a popular and affordable location within north Nottinghamshire.





Floor 0



Floor 1



These particulars are intended as a guide only and do not form part of any offer or contract. All descriptions, measurements, images and plans are provided for illustration purposes and should not be relied upon as statements of fact. Prospective purchasers should satisfy themselves as to the accuracy of the information. Buckley Brown Estate Agents accept no liability for any loss arising from reliance on these details.

© Buckley Brown Estate Agents 2026. All rights reserved.

Exceptional homes deserve  
exceptional representation.

Let's Chat.

01623 633633

[mansfield@buckleybrown.co.uk](mailto:mansfield@buckleybrown.co.uk)

[buckleybrown.co.uk](http://buckleybrown.co.uk)

**BuckleyBrown**  
ESTATE AGENTS