



Coniston Close, London, W4

Guide Price £425,000

WHITMAN & CO.

SALES · LETTINGS · COMMERCIAL

- Ground floor garden flat
- Sunny 28'3x17'2 private garden
- Quiet cul-de-sac location
- Two double bedrooms
- Close to the River and Chiswick House
- No onward chain

Tenure - Leasehold with share of freehold
 Lease length - 999 years remaining
 Ground rent - Peppercorn
 Service charge - £340 pa
 Local authority - Hounslow
 Council tax - Band E

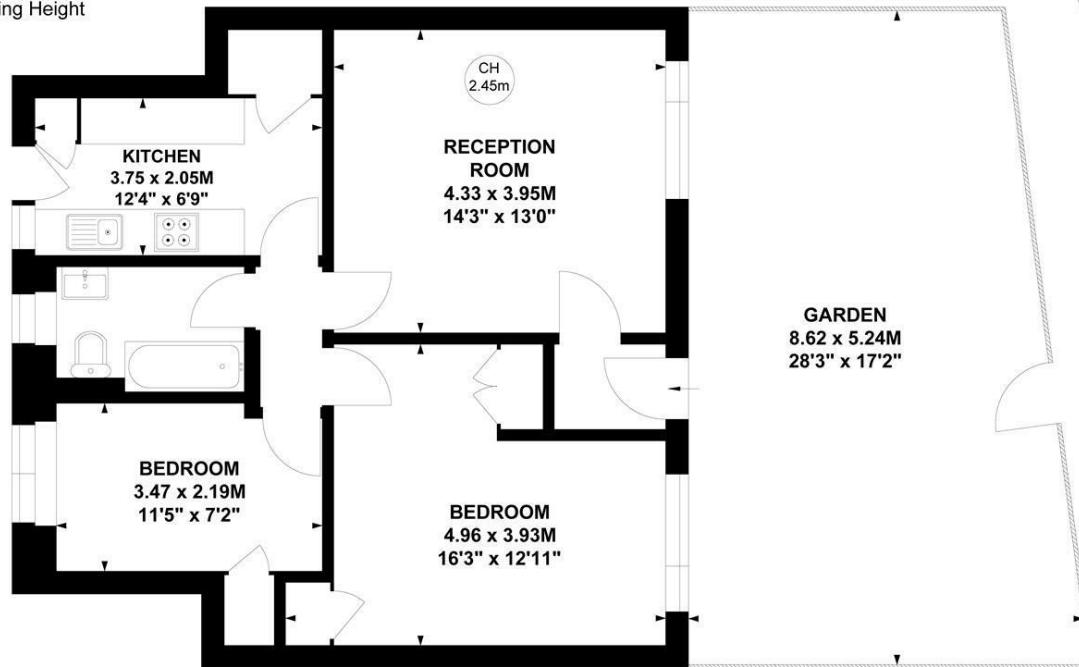
THE PROPERTY

A bright and spacious two-bedroom ground-floor garden flat located in this quiet cul-de-sac in the Grove Park area of Chiswick. The accommodation comprises a large private patio garden which gets a lot of sun, a reception room that overlooks the garden, a spacious double bedroom with fitted wardrobes, a second smaller double bedroom with fitted wardrobes, a bathroom, and a fitted kitchen with a large storage cupboard and a door providing an additional entrance. Coniston Close is situated just off Hartington Road, which runs parallel with the river, and is conveniently located for Dukes Meadows sporting facilities, Chiswick House and Gardens and a number of local shops, cafes and riverside pubs, with Chiswick High Road's more extensive facilities easily accessible. The property is also within the catchment area of excellent primary schools, Grove Park and Strand on the Green. Transport links include Chiswick station, local bus routes and the A4/M4 for routes in and out of London. No onward chain.

Coniston Close, W4

Approximate gross internal area
60.80 sq m / 654 sq ft

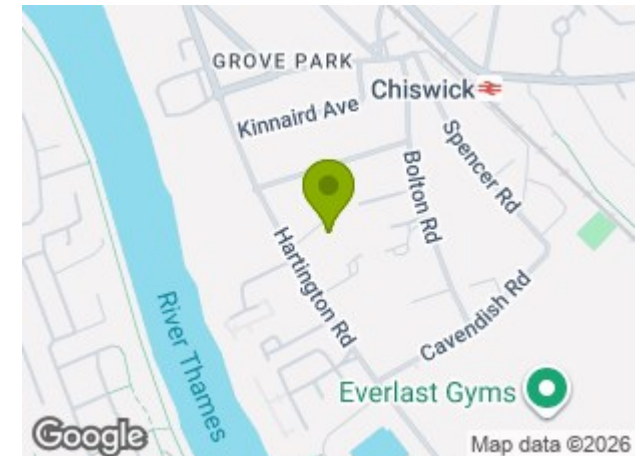
Key :
 CH - Ceiling Height



Ground Floor

Not to scale, for guidance only and must not be relied upon as a statement of fact.
 All measurements and areas are approximate only

SITUATION



5-7 Turnham Green Terrace, Chiswick, London, W4 1RG

Tel 020 8747 8800

E-mail sales@whitmanandco.com

Website www.whitmanandco.com