



Nuthatch Close | Heath Hayes, Cannock | WS11 7LS

Offers In The Region Of £260,000



Summary

**** MODERN STYLE SEMI-DETACHED HOME ** POPULAR LOCATION ** THREE BEDROOMS ** EN-SUITE TO MASTER BEDROOM ** SPACIOUS LOUNGE ** OPEN PLAN KITCHEN DINER ** ENCLOSED REAR GARDEN ** EXCELLENT SCHOOLS AND TRANSPORT LINKS ** VIEWING ADVISED ****

Webbs Estate Agents are pleased to bring to the market a modern-style semi-detached home in the popular location of Heath Hayes, offering excellent transport links, schools and local shops and amenities.

In brief consisting of an entrance hallway, a guest WC, a spacious lounge with walk-in bay window, the open plan kitchen diner has double doors opening out onto the rear garden.

To the first floor there are three generously sized bedrooms, family bathroom and an en-suite shower room to the master, externally the property has an enclosed rear garden and ample off-road parking is provided by a single garage and driveway.

EARLY VIEWING ADVISED

Key Features

- SOUGHT AFTER LOCATION
- MODERN STYLE SEMI-DETACHED HOME
- EXCELLENT TRANSPORT LINKS
- SPACIOUS LOUNGE
- EXCELLENT SCHOOL CATCHMENTWS
- THREE BEDROOMS
- ENCLOSED REAR GARDEN
- OPEN PLAN KITCHEN DINER
- GARGE AND DRIVEWAY
- VIEWING ADVISED

Rooms and Dimensions

ENTRANCE HALLWAY

GUEST WC

SPACIOUS LOUNGE

15'10" x 11'8" (4.85m x 3.56m)

KITCHEN DINER

14'11" x 8'9" (4.57m x 2.69m)

LANDING

BEDROOM ONE

11'5" x 7'8" (3.48m x 2.36m)

EN-SUITE SHOWER ROOM

BEDROOM TWO

8'7" x 9'6" (2.64m x 2.92m)

BEDROOM THREE

8'9" x 6'0" (2.69m x 1.85m)

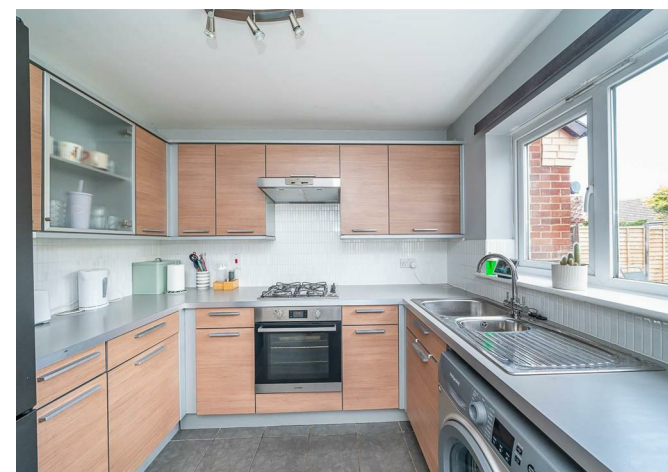
FAMILY BATHROOM

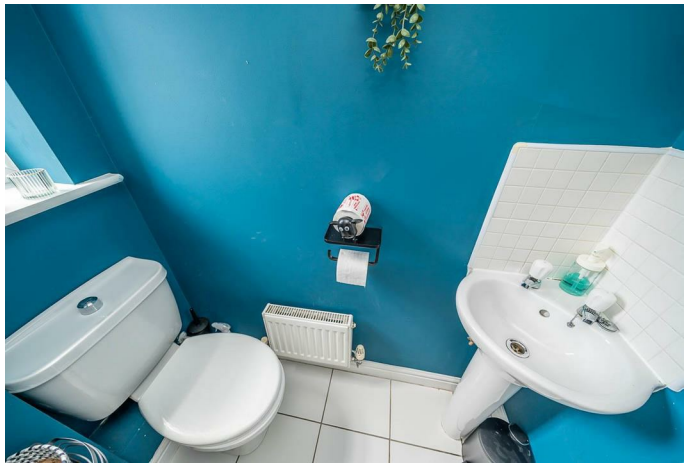
SINGLE GARAGE

REAR GARDEN AND FRONT DRIVEWAY

IDENTIFICATION CHECKS - C

PREMIUM CONVEYANCING (C)

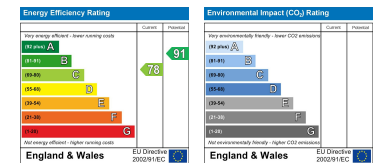






Whilst every attempt has been made to ensure the accuracy of the floorplan contained here, measurements of doors, windows, rooms and any other items are approximate and no responsibility is taken for any error, omission or mis-statement. This plan is for illustrative purposes only and should be used as such by any prospective purchaser. The services, systems and appliances shown have not been tested and no guarantee as to their operability or efficiency can be given.
Made with Metropix ©2025

Webbs Estate Agents - endeavour to maintain accurate depictions of properties in Virtual Tours, Floor Plans and descriptions, however, these are intended only as a guide and purchasers must satisfy themselves by personal inspection.



153 Avon Road, Cannock, WS11 1LF

Tel: 01543 468846 | Email: sales@webbestateagents.co.uk | www.webbestateagents.co.uk

