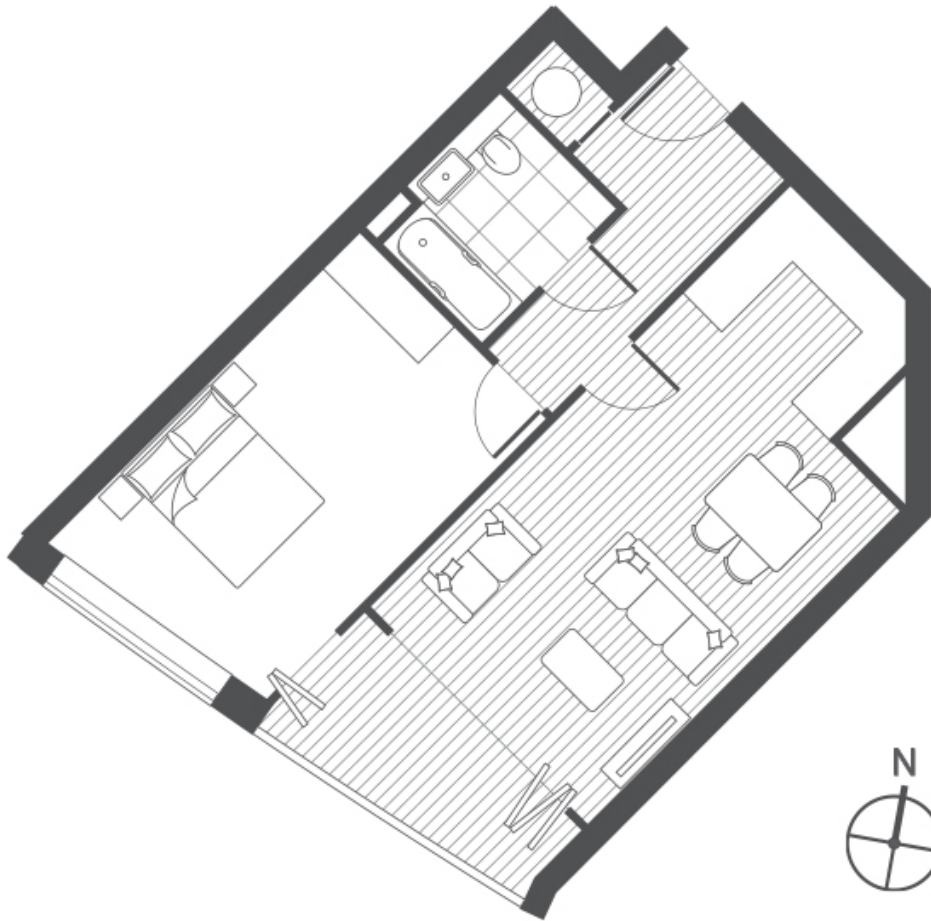


## WESTERN GATEWAY, E16

£2,000 pcm

Available Now 643 Sq Ft 1 Bedroom Floor to Ceiling Windows Furnished with Integrated Appliances 2 minutes from Royal Victoria DLR Close to Custom House Elizabeth Line and Canning Town Jubilee Line On-site 24 Hour Concierge with Video Phone Entry EPC: B



Living/dining	5.4 x 3.7 m	17'7" x 12'2"
Kitchen area	2.5 x 1.8 m	8'2" x 5'10"
Bedroom 1	5.3 x 3.2 m	17'3" x 10'5"
Sun Lounge	3.7 x 2.0 m	12'2" x 6'6"
<b>Internal area</b>	<b>59.8 sq m</b>	<b>643 sq ft</b>

**LiFE RESIDENTIAL**

16 Royal Crest Avenue,  
London, E16 2TQ  
Sales: 020 3846 3332  
Lettings: 020 3846 3311

Energy Rating: B. We aim to make our particulars both accurate and reliable. However they are not guaranteed; nor do they form part of an offer or contract. If you require clarification on any points then please contact us, especially if you're traveling some distance to view. Please note that appliances and heating systems have not been tested and therefore no warranties can be given as to their good working order.