



## Galleon Way, offers in the region of £200,000

- Immaculately Presented
- Master Bedroom with Ensuite
- Views of Cardiff Bay and Cardiff City Centre
- Allocated Parking and Visitor Bays
- Sought After Location
- EPC Rating: D



 2  2  1



## About the property

Located in the sought after area of Cardiff Bay, this immaculately presented and recently renovated two bedroom fifth floor apartment boasts spectacular views across Cardiff Bay.

The property has been renovated to an impeccable standard, featuring new flooring throughout, including Amtico herringbone flooring, enhancing both the style and quality of the living space. In addition, a new water cistern was fitted in March 2026, coming with a warranty of up to 20 years, offering valuable peace of mind.

Perfectly positioned just a stone's throw from local amenities, the apartment is within close proximity to the Red Dragon Centre, Mermaid Quay, and Cardiff Bay Train Station, providing excellent commuting links, along with easy access to the A4234 and M4.

The accommodation comprises a communal entrance with lift and stair access to all floors, a welcoming hallway, a bright open plan lounge/kitchen with access to a private balcony, a generous master bedroom with en suite, a second well proportioned bedroom, and a modern main bathroom.

Further benefits include an allocated parking space and visitor parking within a gated, barrier controlled private car park.

Viewings are highly recommended for this superb apartment, which would make an ideal purchase for a range of buyers.

To arrange a viewing, please call 02920 397171 or book online at [www.peteralan.co.uk](http://www.peteralan.co.uk).

## Accommodation

### Communal Entrance

### Hallway

### Kitchen/Lounge

20' 11" x 15' 1" ( 6.38m x 4.60m )

### Master Bedroom

15' 1" x 10' 9" ( 4.60m x 3.28m )

### Ensuite

7' 1" x 6' 3" ( 2.16m x 1.91m )



## Bedroom Two

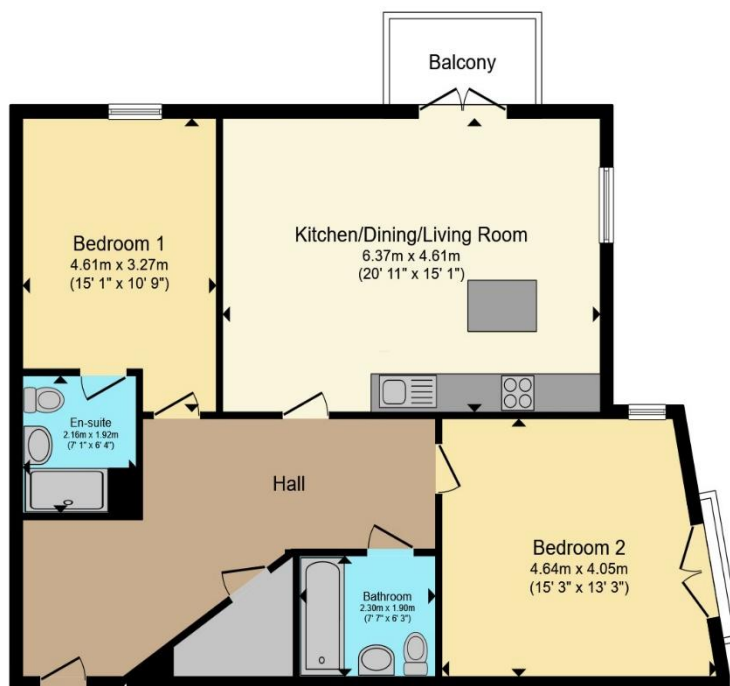
15' 3" x 13' 3" ( 4.65m x 4.04m )

## Bathroom

7' 5" x 7' 5" ( 2.26m x 2.26m )

## Balcony

## Floorplan



Total floor area 91.8 m<sup>2</sup> (988 sq.ft.) approx

This floor plan is for illustrative purposes only. It is not drawn to scale. Any measurements, floor areas (including any total floor area), openings and orientation are approximate. No details are guaranteed, they cannot be relied upon for any purpose and they do not form part of any agreement. No liability is taken for any error, omission or misstatement. A party must rely upon its own inspection(s). Powered by [www.propertybox.io](http://www.propertybox.io)

## Important Information

Note while we endeavour to make our sales details accurate and reliable, if there is any point which is of particular interest to you, please contact the office and we will be pleased to confirm the position for you. We have not personally tested any apparatus, equipment, fixtures, fittings or services and cannot verify they are in working order or fit for their purposes. Nothing in these particulars is intended to indicate that carpets or curtains, furnishings or fittings, electrical goods (whether wired or not). Gas fires or light fittings or any other fixtures not expressly included form part of the property offered for sale. This computer generated Floorplan, if applicable, is intended as a general guide to the layout and design of the property. It is not to scale and should not be relied upon for dimensions. Tenure: We cannot confirm the tenure of the property as we have not had access to the legal documents. The buyer is advised to obtain verification from their solicitor or surveyor.