



Harwood Road, SW6

£475,000

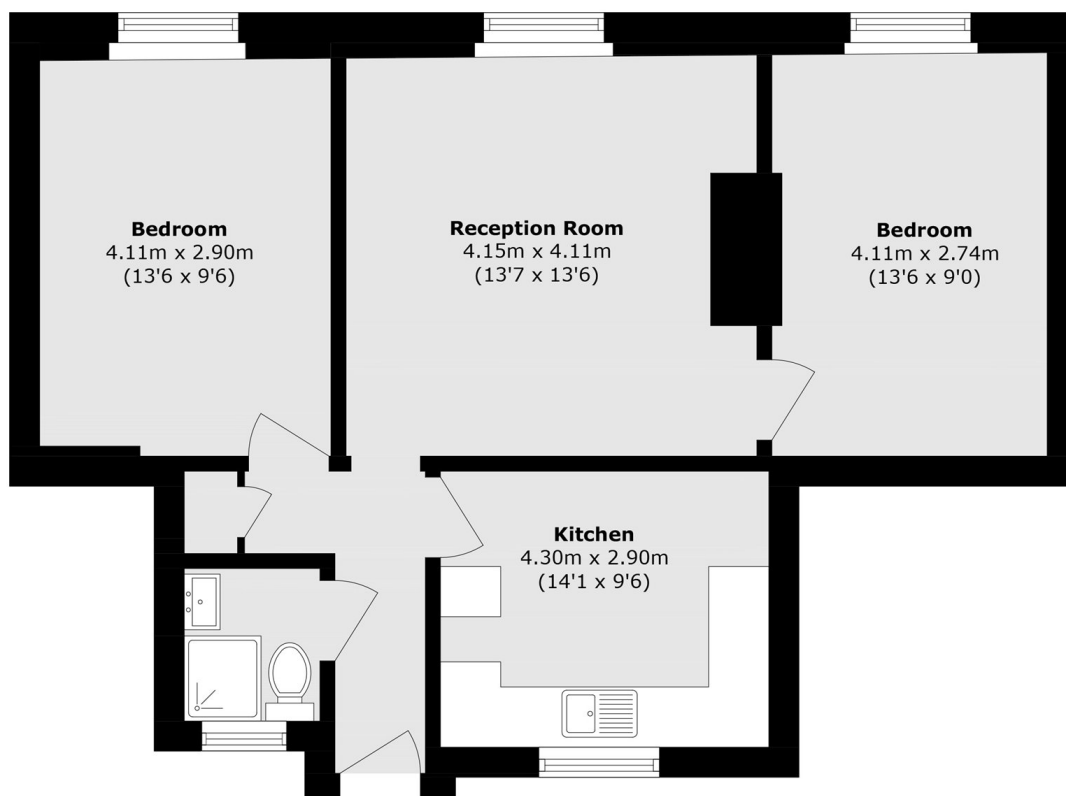
An immaculately presented lateral flat comprising two generous double bedrooms and enjoying direct views over Eel Brook Common. The property features elegant hardwood flooring throughout, a spacious eat-in kitchen with fully integrated appliances, and a bright, expansive reception room offering excellent space for entertaining.

With direct views over Eel Brook Common, the flat is enviably located within striking distance of Chelsea, alongside the wealth of amenities and transport links of Parsons Green and Fulham Broadway.

Features

Two Double Bedrooms
Immaculately Refurbished
Modern Bathroom
Fully Integrated Kitchen
Spacious Living Room
Chain Free

Harwood Road, London, SW6



Total area (approx.): 58.0 sq. m (624.3 sq. ft)