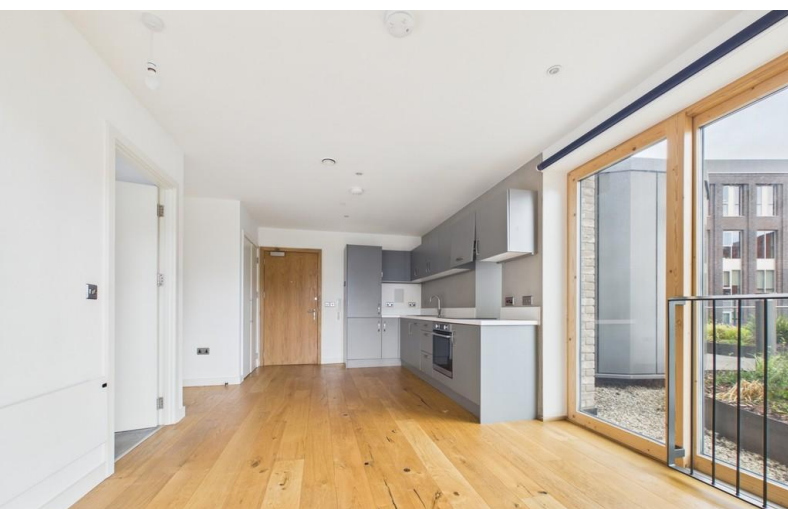


**TO LET**



## **Clayworks, Hanley**

**1 Bedroom, 1 Bathroom, Apartment**

**£900 pcm**



## Clayworks, Hanley

1 Bedroom, 1 Bathroom

£900 pcm

Date available: 20th July 2026

Deposit: £1,038

Unfurnished

Council Tax band: A

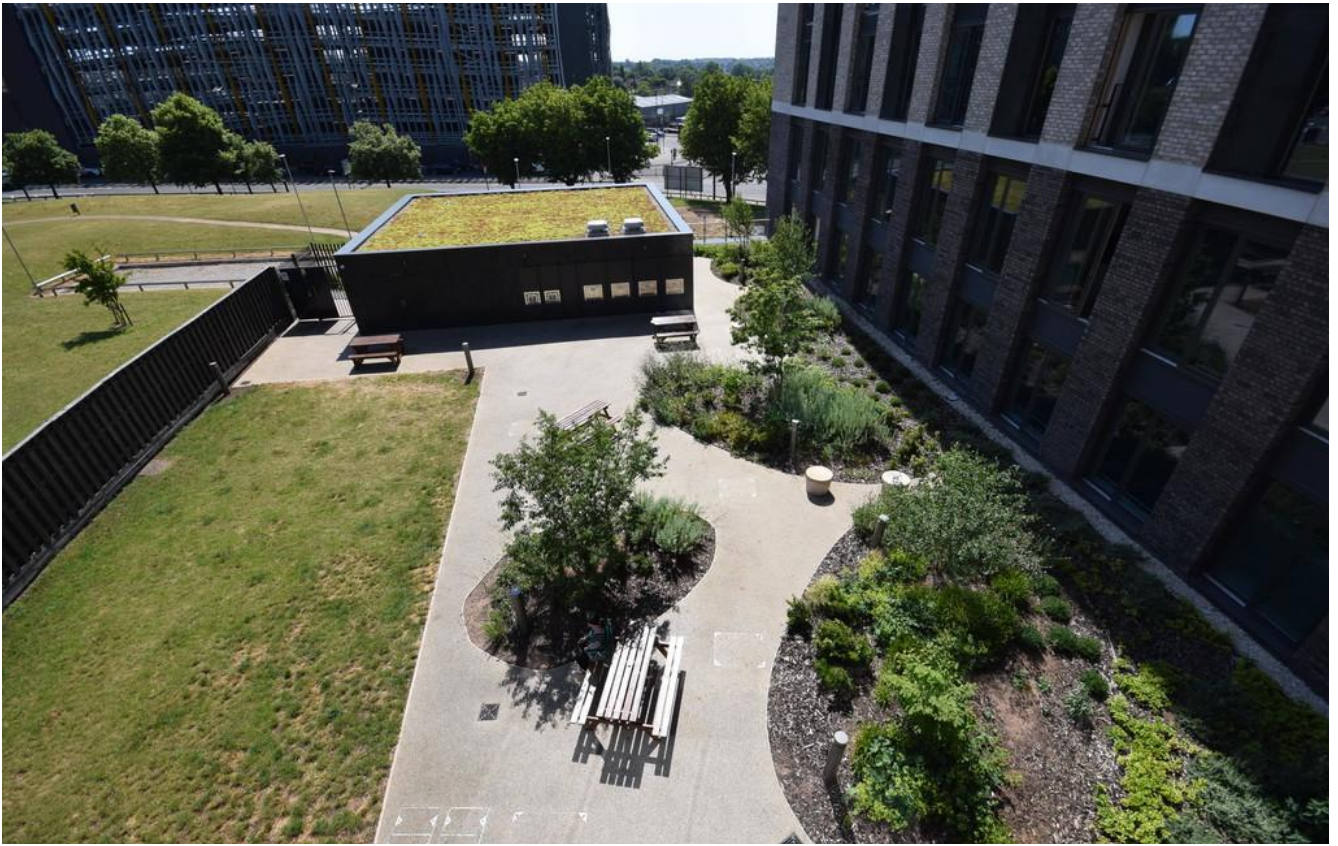
- Concierge, CCTV and on-site maintenance team
- Secure bike storage
- Secure entry system with lift access to all floors
- Prime city centre location
- Part of the award-winning Smithfield development
- Professionally managed development
- Council tax band A

Welcome to Clayworks, a prestigious residential development in the heart of Hanley's Smithfield estate, nestled in the Cultural Quarter. Clayworks, reflects the areas world famous pottery heritage with a balanced blend of industrial, yet modern feel in every apartment.

This 2nd floor 1 bedroom unfurnished apartment features a spacious open plan living area, ceiling height windows opening to a Juliette balcony, allowing natural light to flood through the apartment. The concrete walls and oak floors blend perfectly with the contemporary fitted kitchen which comes complete with an integrated oven and hob, fridge freezer and dishwasher; while separate utility cupboard houses a washer/dryer. The property also offers a generous double bedroom and a stylish modern bathroom.

When you join us and become a Clayworks resident you will enjoy a full range of exclusive benefits. Our weekday residents service manager & weekend concierge are always on hand to assist you with your requests.





## Energy Efficiency Rating

	Current	Potential
<i>Very energy efficient - lower running costs</i>		
(92-100) <b>A</b>		
(81-91) <b>B</b>	84	84
(69-80) <b>C</b>		
(55-68) <b>D</b>		





**Martin & Co Stoke on Trent**

12 Albion Street • Stoke-On-Trent • ST1 1QH

T: 01782 262880 • E: stokeontrent@martinco.com <http://www.martinco.com>

**01782 262880**



**Accuracy:** References to the Tenure of a Property are based on information supplied by the Seller. The Agent has not had sight of the title documents. A Buyer is advised to obtain verification from their Solicitor. Items shown in photographs including but not limited to carpets, fixtures and fittings are not included unless specifically mentioned within the sales particulars. They may however be available by separate negotiation. Buyers must check the availability of any property and make an appointment to view before embarking on any journey to see a property. No person in the employment of the agent has any authority to make any representation about the property, and accordingly any information given is entirely without responsibility on the part of the agents, sellers(s) or lessors(s). Any property particulars are not an offer or contract, nor for part of one. **Sonic / laser Tape:** Measurements taken using a sonic / laser tape measure may be subject to a small margin of error. **All Measurements:** All Measurements are Approximate. **Services Not tested:** The Agent has not tested any apparatus, equipment, fixtures and fittings or services and so cannot verify that they are in working order or fit for the purpose. A Buyer is advised to obtain verification from their Solicitor or Surveyor.

