



## CLIFTON PLACE, W2

£5,250 per month

Two Bedrooms  
Two Bathrooms  
Private Balcony  
Concierge Building  
Bespoke Furniture  
Excellent Storage

@marshandparsons  
marshandparsons.co.uk

MARSH &  
PARSONS



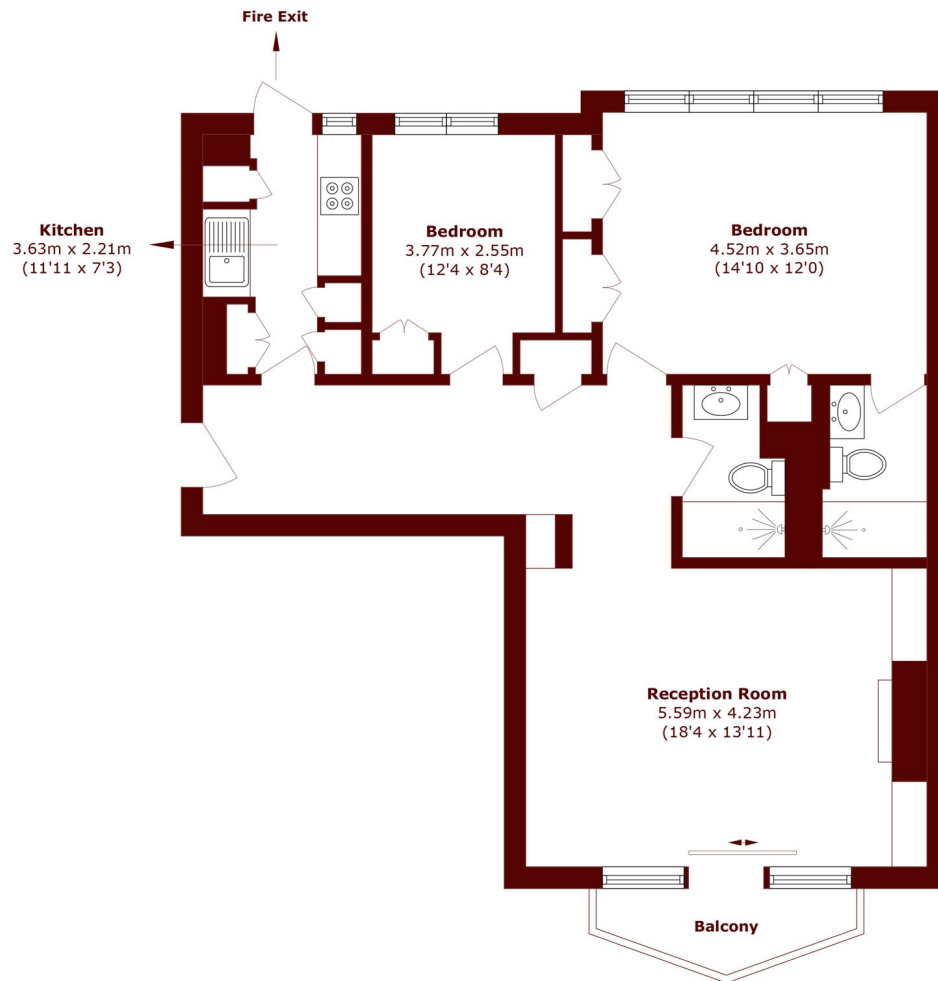
# ABOUT THE PROPERTY

A high specification two bedroom, two bathroom apartment within a concierge building, featuring wooden floors throughout, bespoke furniture, a private balcony and excellent storage.

Clifton Place is ideally located between Paddington and Hyde Park, with excellent transport links, local restaurants and cafés, and the open spaces of Hyde Park nearby.



# STEP INSIDE CLIFTON PLACE



Total area (approx.): 82.2 sq. m (884.8 sq. ft)  
Balcony area (approx.): 3.2 sq. m (34.4 sq. ft)

Little Venice  
020 7993 3060

Energy Rating: We aim to make our particulars both accurate and reliable. However, they are not guaranteed; nor do they form part of an offer or contract. If you require clarification on any points then please contact us, especially if you're traveling some distance to view. Please note that appliances and heating systems have not been tested and therefore no warranties can be given as to their good working order

MARSH &  
PARSONS