



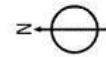
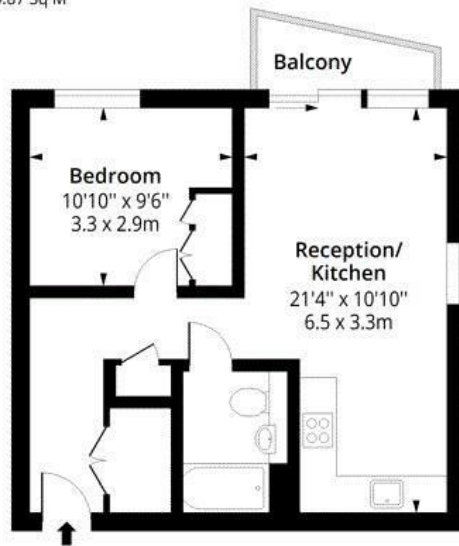
33 Darjeeling House Memorial Avenue, Slough, SL1 3GN

£1,400 Per month

- Gym
- Cinema
- 24 hour Concierge
- Co-working area

Darjeeling House, SL1

Approx. Gross Internal Area 483 Sq Ft - 44.87 Sq M



Second Floor

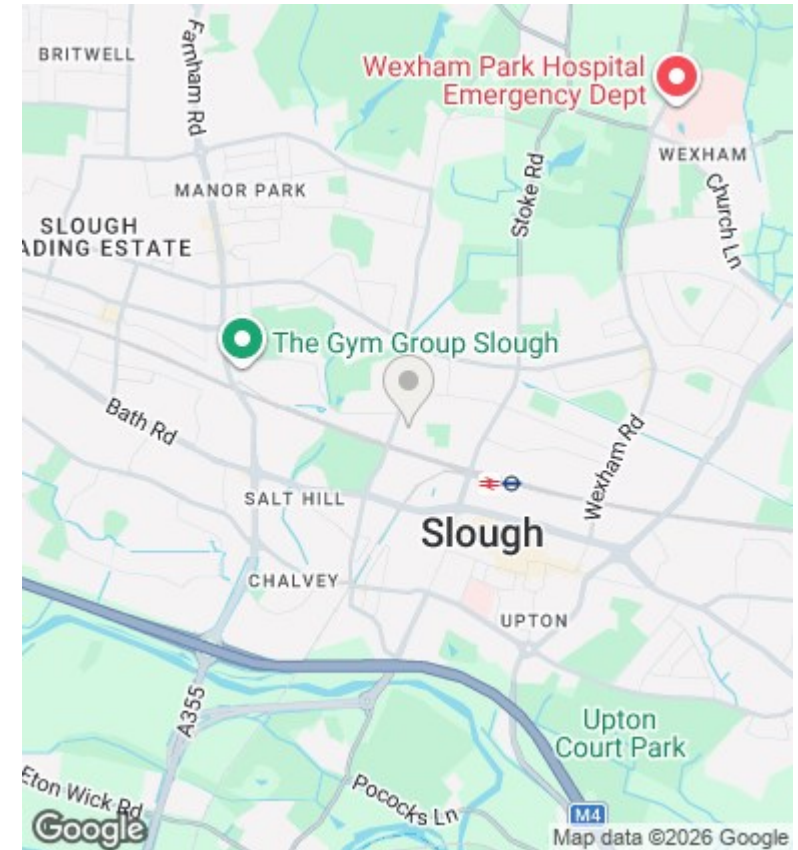
Floor Area 483 Sq Ft - 44.87 Sq M



Measured according to RICS IPMS2. Floor plan is for illustrative purposes only and is not to scale. Every attempt has been made to ensure the accuracy of the floor plan shown, however all measurements, fixtures, fittings and data shown are an approximate interpretation for illustrative purposes only. 1 sq m = 10.76 sq feet.

lpaplus.com

Date: 2/9/2024



Directions

Viewings

Viewings by arrangement only. Call 0208 075 4927 to make an appointment.

Council Tax Band

C

EPC Rating:

C

Energy Efficiency Rating		Current	Potential
Very energy efficient - lower running costs			
(92 plus) A			
(81-91) B			
(69-80) C		80	80
(55-68) D			
(39-54) E			
(21-38) F			
(1-20) G			
Not energy efficient - higher running costs			
England & Wales		EU Directive 2002/91/EC	