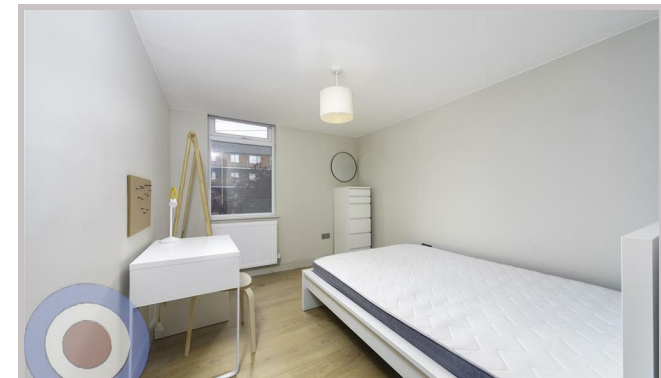




30 Ruskin Avenue  
Manchester  
M14 4DQ



# 30 Ruskin Avenue

## £780 Per month

Launching for 2026, pictures are for illustration purposes, taken off another property with same design/specification.

This stunning 8-bedroom student house in Whitworth Park is just a short walk to the university, with easy access to the city and all local amenities. All eight bedrooms are doubles, with 3 bathrooms, including a fabulous top-floor bathroom flooded with natural light and a modern freestanding bathtub.

The ground floor features French solid oak parquet flooring, exposed brick, and timber cladding, creating a stylish and inviting space. The modern sleek kitchen comes with quartz countertops, while the dining area opens onto a private enclosed courtyard garden, perfect for socialising and relaxing.

No deposit required, with all bills included and communal cleaning provided throughout the tenancy.

£180 per week  
£780 per month

- NO DEPOSIT
- ALL BILLS INCLUDED
- COMMUNAL CLEANING INCLUDED
- ALL DOUBLE BEDROOMS
- ENERGY EFFICIENT HOUSE C OR ABOVE
- LOCATED IN WHITWORTH PARK

Local Authority  
Manchester City

Council Tax Band Exempt

EPC Rating C

### Contact

01613992619

hello@welcometomanchesterlettings.com

www.welcometomanchesterlettings.com

