

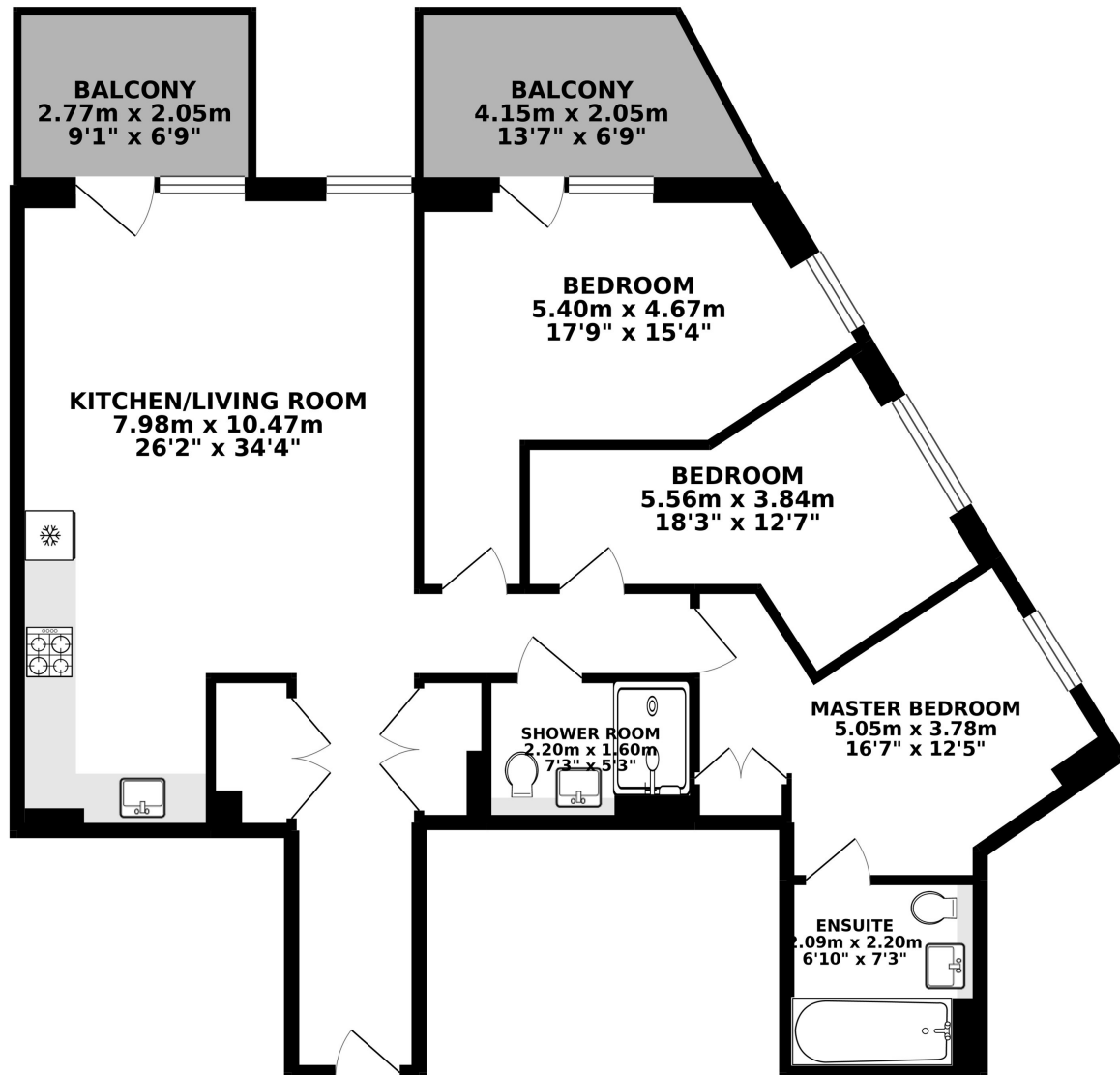


## **WESTERN GATEWAY, E16**

**£650,000**

A three bedroom apartment for two private balconies in an ideal location. This property features an expansive reception/kitchen with modern appliances and access to one of the two balconies, three bedrooms, one with en suite and another with private balcony access, and a family bathroom.

- Three Bedrooms
- Two Bathrooms
- Two Private Balconies
- 24 Hour Concierge
- Communal Garden
- Parking



TOTAL FLOOR AREA : 94.90 sq. m. ( 1021.45 sq. ft. ) approx.

Whilst every attempt has been made to ensure the accuracy of the floorplan contained here, measurements of doors, windows, rooms and any other items are approximate and no responsibility is taken for any error, omission or mis-statement. This plan is for illustrative purposes only and should be used as such by any prospective purchaser. The services, systems and appliances shown have not been tested and no guarantee as to their operability or efficiency can be given.  
Made with Metropix ©2019



## LiFE RESIDENTIAL

16 Royal Crest Avenue,  
London, E16 2TQ  
Sales: 020 3846 3332  
Lettings: 020 3846 3311

Energy Rating: B. We aim to make our particulars both accurate and reliable. However they are not guaranteed; nor do they form part of an offer or contract. If you require clarification on any points then please contact us, especially if you're traveling some distance to view. Please note that appliances and heating systems have not been tested and therefore no warranties can be given as to their good working order.