

Frampton Street, NW8

£500,000

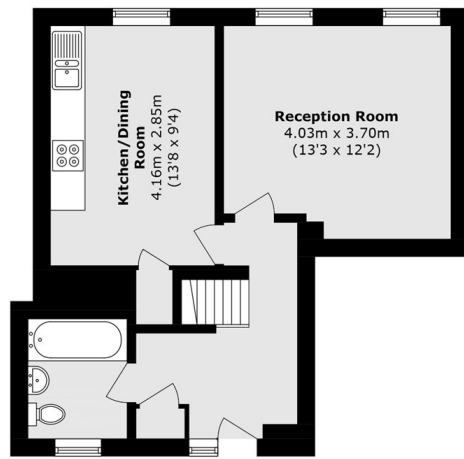
Arranged over two floors, this spacious three bedroom apartment extends to approximately 1,000 sq ft and offers excellent potential for a range of buyers. The property features a separate kitchen and is offered chain free.

Eastlake House is conveniently positioned close to the shops, cafés, and restaurants of St John's Wood High Street. Regent's Park and Primrose Hill are both within easy reach, offering some of London's finest green open spaces. Transport: St John's Wood underground station (Jubilee line).

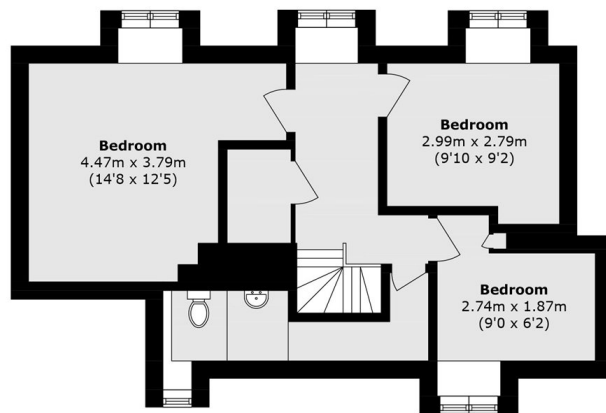
Features

- Three Bedrooms
- Chain Free
- Split Level
- Central Location
- Good Condition
- Approximately 1000 Sq.Ft

Frampton Street, London, NW8



Third Floor



Fourth Floor

Total area (approx.): 89.7 sq. m (965.5 sq. ft)