



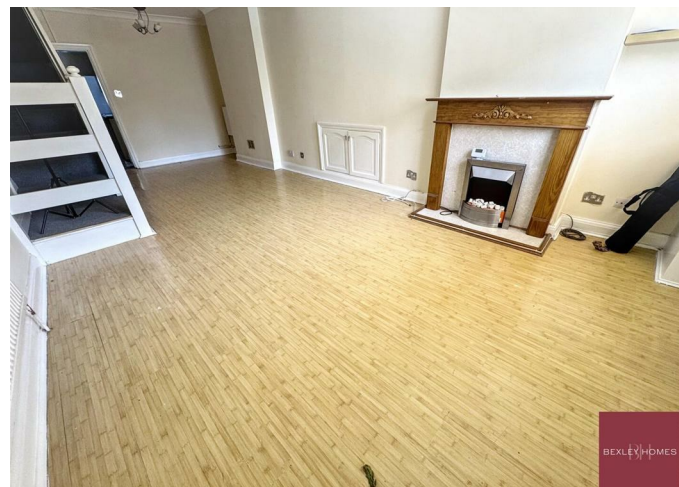
House - Mid Terrace

50
SWANSCOMBE
STREET,
SWANSCOMBE,
DA10 0BN

Per Month

£1,440

FEATURES



BEXLEY HOMES

2 Bedroom House – Mid Terrace located in Swanscombe

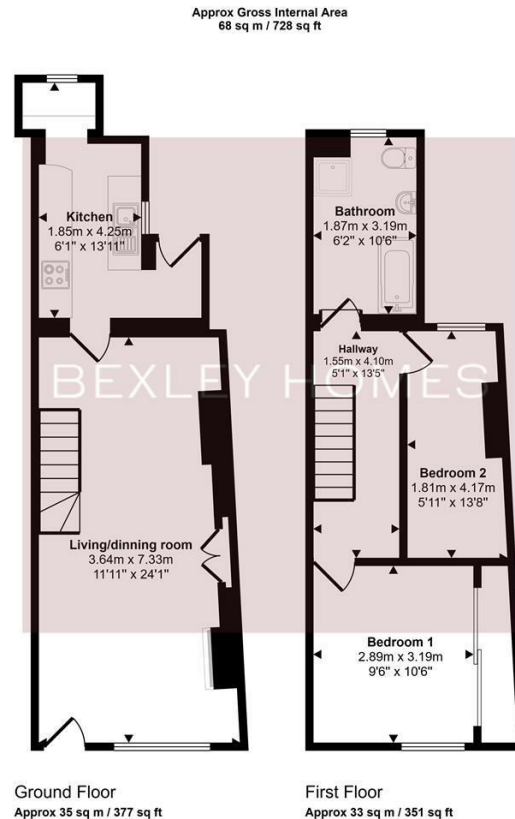
Nestled in Swanscombe, this delightful mid-terrace house offers a perfect blend of character and modern living. Built in 1900, this two-bedroom home is ideal for small families, couples, or individuals seeking a cosy yet spacious environment.

Upon entering, you are welcomed into a generous reception room that serves as the heart of the home. This inviting space is perfect for entertaining guests or enjoying quiet evenings in. The fitted kitchen is well-equipped, providing ample storage and workspace.

The property features two comfortable bedrooms, each offering a peaceful retreat for rest and relaxation. The family bathroom is conveniently located, ensuring ease of access for all residents.

Additional benefits include double glazing throughout, which enhances energy efficiency and contributes to a warm and inviting atmosphere.

Swanscombe is a vibrant community with a range of local amenities, parks, and excellent transport links, making it an ideal location for those who appreciate both convenience and a friendly neighbourhood. This charming property is a wonderful opportunity for anyone looking to make a home in this lovely area.

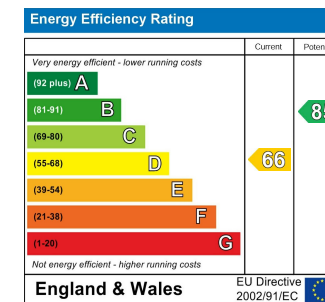


This floorplan is only for illustrative purposes and is not to scale. Measurements of rooms, doors, windows, and any items are approximate and no responsibility is taken for any error, omission or mis-statement. Icons of items such as bathroom suites are representations only and may not look like the real items. Made with Made Snappy 360.

Call us on
01322 948500

Belvedere@bexleyhomes.co.uk
www.bexleyhomes.co.uk

Council Tax Band
B



Agents Note: Whilst every care has been taken to prepare these particulars, they are for guidance purposes only. All measurements are approximate and are for general guidance purposes only and whilst every care has been taken to ensure their accuracy, they should not be relied upon and potential buyers are advised to recheck the measurements.

BEXLEY HOMES