



74 Horn Street, Hythe - CT21 5SR
£384,000

Approximate Gross Internal Area (Including Low Ceiling) = 103 sq m / 1106 sq ft

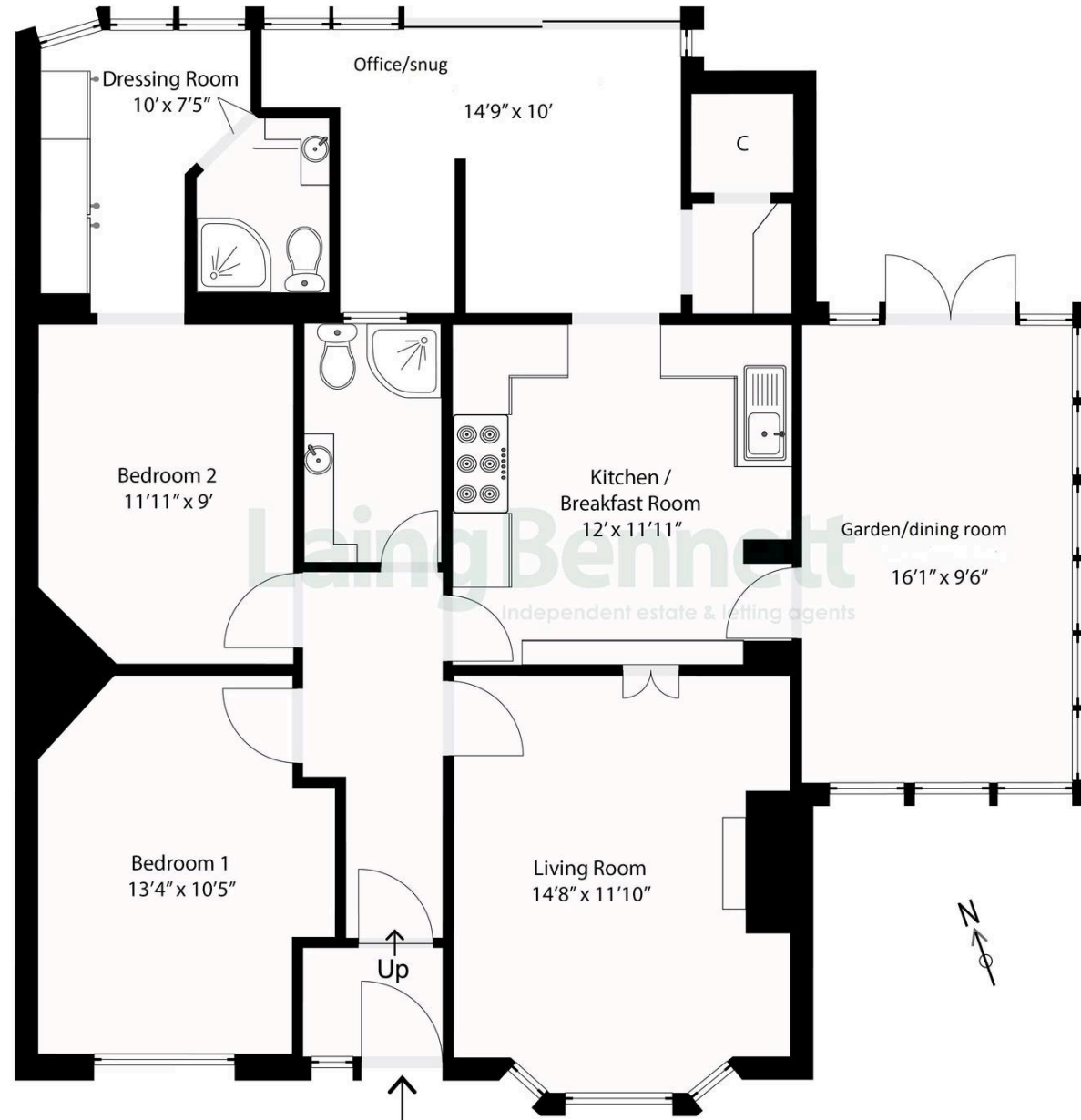


Illustration for identification purposes only. Measurements are approximate. Dimensions given are between the widest points. Not to scale. Outbuildings are not shown in actual location.



74 Horn Street

Hythe

A delightful 1930's bungalow tucked away in a quiet location away from passing traffic and adjoining fields to the rear. The bungalow forms the end of an attractive row of three bungalows. This superb home has recently been superbly updated to an extremely high standard. The property further benefits from delightful private good size gardens which wrap beautifully around the property. No onward chain. The accommodation comprises: Entrance porch, hall, living room, kitchen/breakfast room, dining/garden room, office/snug, rear lobby with store cupboard, shower room/WC, bedroom one, bedroom two with dressing room and en suite shower room/WC. Outside the property is accessed via a long pathway and delightful private gardens wrap around the property. The vendor recently purchased an additional 100ft (approx) piece of land to the right hand side of the property which offers much potential for extra garden or parking subject to any necessary permissions.

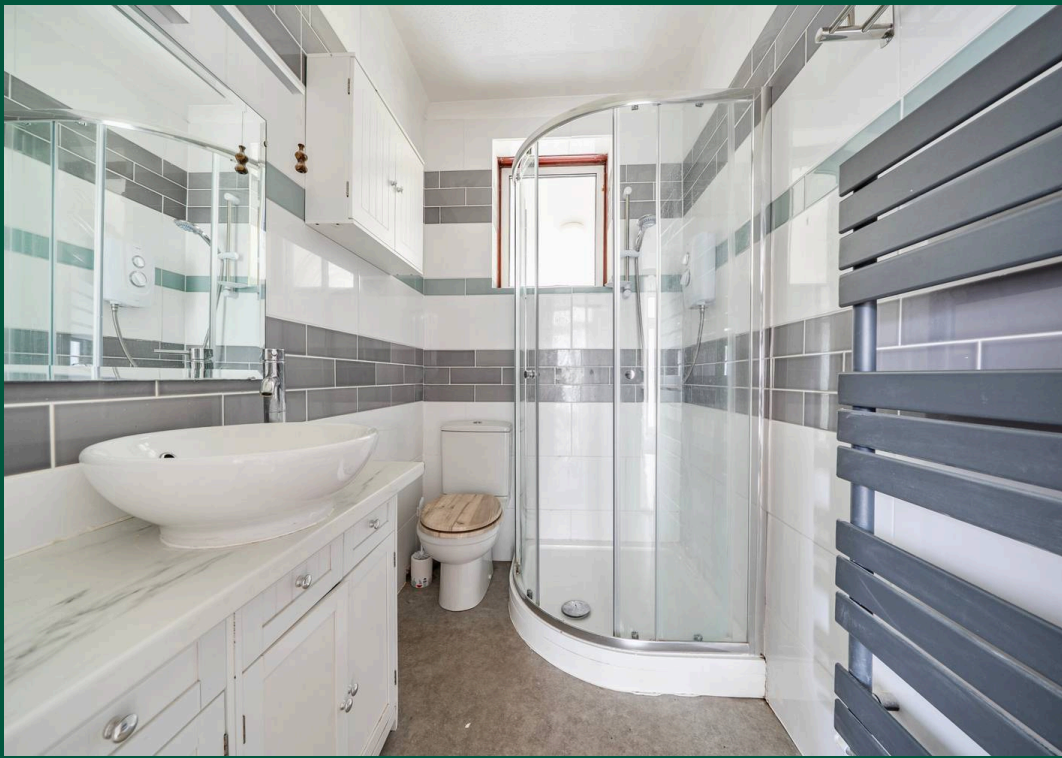
Council Tax band: B

Tenure: Freehold

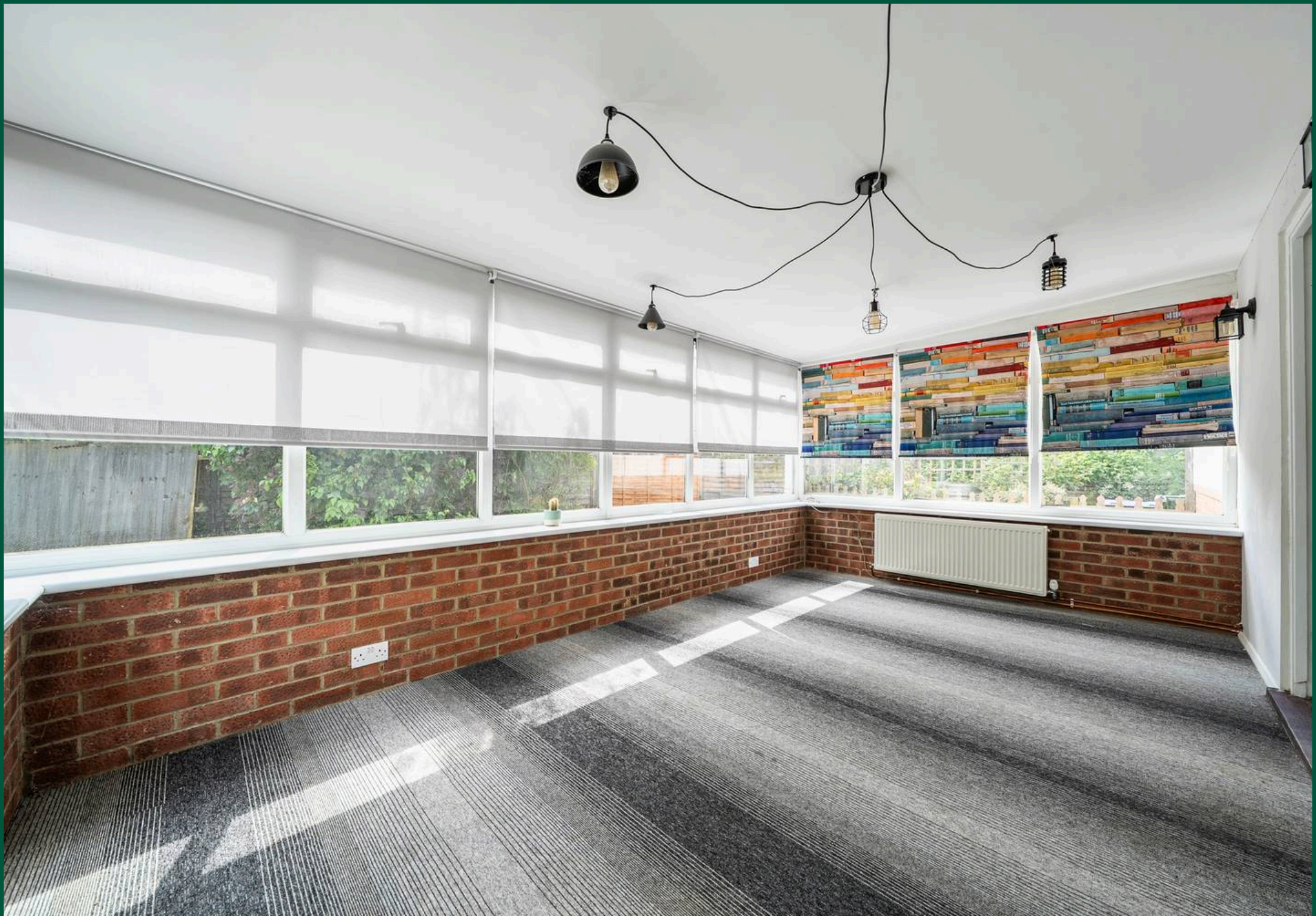
EPC Energy Efficiency Rating: E

EPC Environmental Impact Rating: F









Laing Bennett

Laing Bennett Ltd, The Estate Office, 8 Station Road – CT18 8HP

01303 863393 • info@laingbennett.co.uk • www.laingbennett.co.uk/

DISCLAIMER – These details are for guidance only and do not form part of an offer or contract. Measurements are approximate. Laing Bennett Ltd and the Vendor/Landlord accept no liability. Services and appliances are untested. Applicants must make their own checks. Items shown may not be included. No staff have authority to give warranties.