



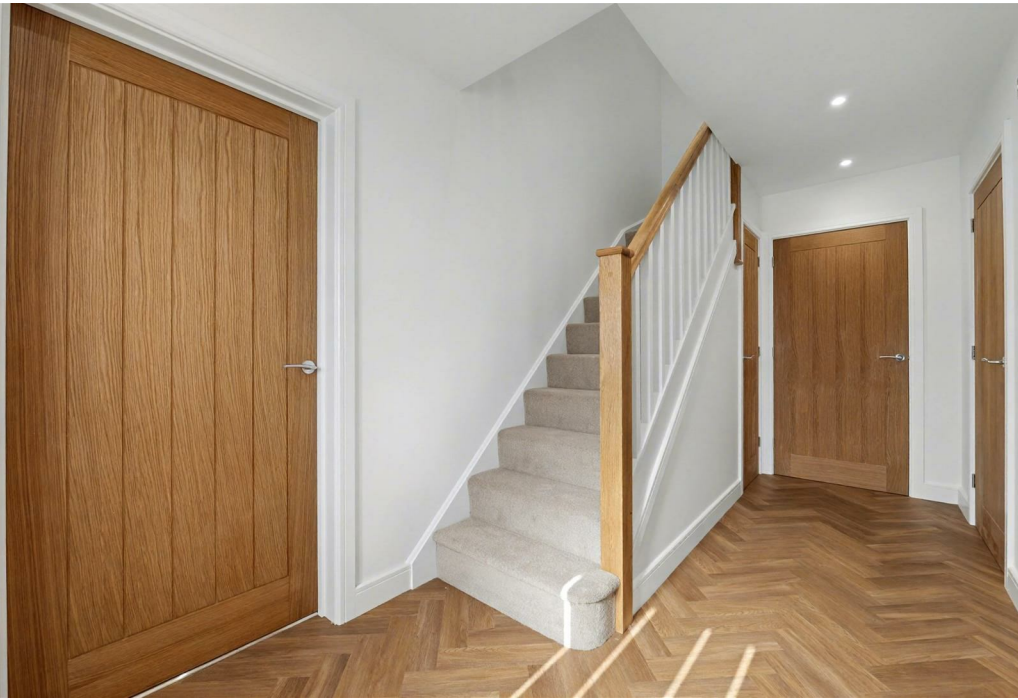
Hoggs Norton, Hoggs Norton, Orton Lane,

Loveitts
PART OF | SHELDON BOSLEY KNIGHT

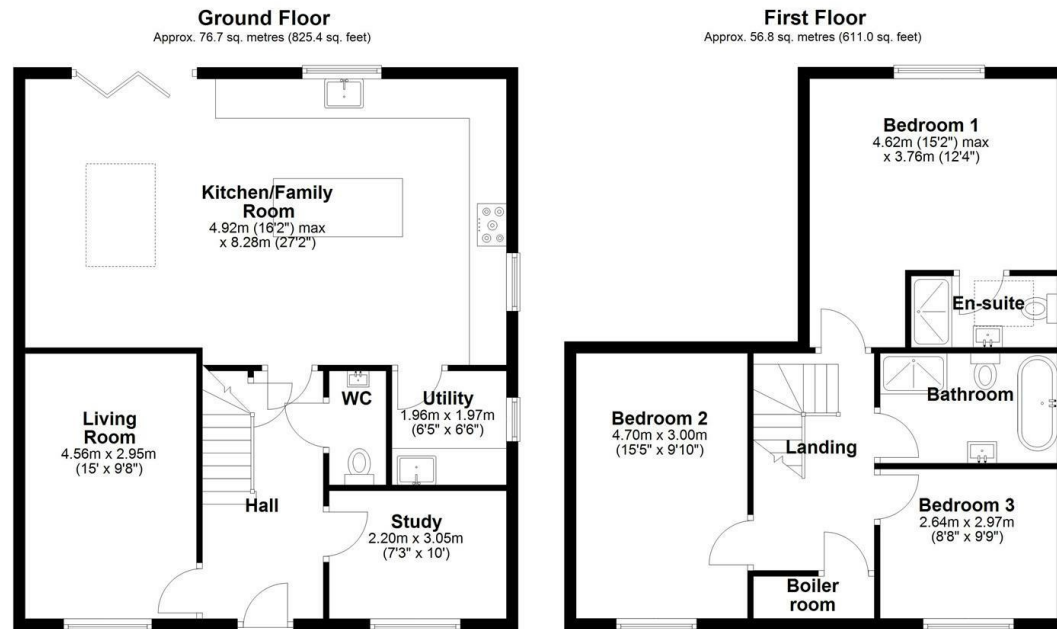
Property Description

***OPEN EVERY WEDNESDAY IN MAY,
COME AND TAKE A LOOK AROUND
OUR FABULOUS SHOW HOME, BY
APPOINTMENT ONLY - DON'T MISS
OUT ON FUTURE RELEASES - CALL
US TODAY TO FIND OUT MORE
ABOUT OUR FABULOUS INCENTIVES,
IF RESERVED IN MAY***





Key Features



Total area: approx. 133.4 sq. metres (1436.4 sq. feet)

All efforts have been made to ensure that the measurements on this floorplan are accurate however these are for guidance purposes only.
Plan produced using PlanUp.

Key

- Plots 1 - 4 Bedroom Detached Pub Conversion
- Plots 2 - 5 Bedroom Detached House
- Plots 3 - 3 Bedroom Detached House
- Plots 4 - 4 Bedroom Detached House
- Garage
- Parking

Residential Development
Hoggs Norton



For identification purposes only. Not a legal representation of the development. Not to scale



PART OF | SHELDON BOSLEY KNIGHT

- ***OPEN EVERY WEDNESDAY IN MAY, COME AND TAKE A LOOK AROUND OUR FABULOUS SHOW HOME, BY APPOINTMENT ONLY***
- BRAND NEW HOME - WITH REAR ASPECT COUNTRYSIDE VIEWS IN A BEAUTIFUL VILLAGE LOCATION
- CALL US TODAY TO FIND OUT MORE ABOUT OUR FABULOUS INCENTIVES, IF RESERVED IN MAY
- AIR SOURCE HEAT PUMP AND UNDERFLOOR HEATING TO GROUND FLOOR
- OPEN PLAN KITCHEN/DINING AND FAMILY ROOM WITH BI-FOLD DOORS OPENING OUT TO REAR GARDEN
- MASTER BEDROOM WITH ENSUITE
- SINGLE GARAGE AND DRIVEWAY
- LOUNGE AND SEPARATE STUDY/SNUG
- HIGH SPECIFICATION THROUGHOUT
- M42/A5 ROAD NETWORK LINKS

£539,500