



Guide Price
£190,000

Leasehold

2x 🏠 1x 🚶 1x 🚗

Ingles Road, Folkestone,
Kent, CT20

Wards
Helping you move forwards



Main features

- Luxurious dressing room
- Extra storage room by front entrance
- Full of character
- Close to Folkestone town and the beautiful Leas
- Spacious well flowing rooms

Accommodation

GROUND FLOOR

Entrance Hall

Bedroom 2: 13'9 x 10'2 (4.19m x 3.10m)

Dressing Room

Bedroom 1: 12'8 x 12'2 (3.86m x 3.71m)

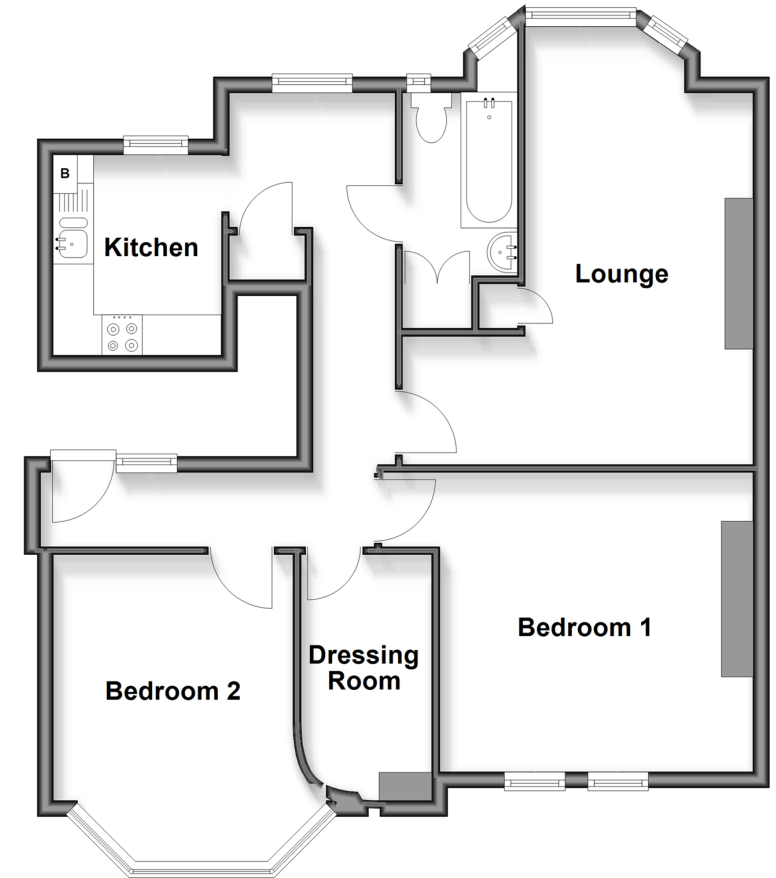
Lounge: 17'11 x 9'3 (5.46m x 2.82m)

Bathroom

Kitchen: 8'1 x 6'10 (2.47m x 2.08m)

Ground Floor

Approx. 69.7 sq. metres (750.1 sq. feet)



Call Folkestone - 01303 256505 ■ wardsfolkent.co.uk

- Legal advice should be taken to verify fixtures/fittings, planning, alterations and/or lease details
- Appliances & services are untested, dimensions are approximate and floor plans are not to scale



12638483/20251031/ET/CW