



# Maitland Road , Wickford, SS12 9PU Offers In Excess Of £185,000

\*\* GUIDE PRICE £185,000 - £195,000 \*\* CHAIN FREE \*\*

Situated on the popular Maitland Road is this CHAIN FREE, one bedroom first floor maisonette that benefits from its own private front door.

The property comprises a spacious lounge, fitted kitchen, double bedroom and 3 piece bathroom. The layout provides a practical and comfortable living space ideal for first-time buyers, downsizers or buy to let investors.

Further benefits include an exceptionally long lease with approximately 953 years remaining, along with no ground rent or service charge, making this a rare and attractive opportunity.

Conveniently located within easy reach of Wickford town centre, local shops, amenities and mainline railway station offering routes into London Liverpool Street.

Early viewing is highly recommended.

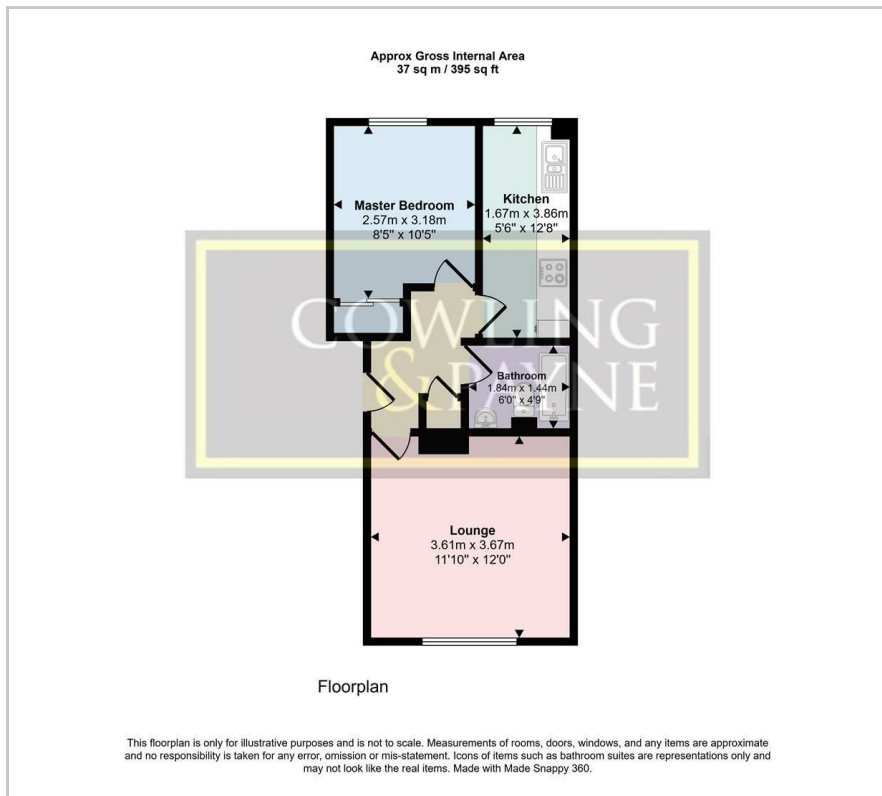
- Guide price £185,000 - £195,000
- One bedroom first floor maisonette
- Chain free
- No ground rent or service charge
- Long lease of approx 953 years remaining
- Allocated parking
- Popular location with local amenities nearby
- Ideal first time purchase or investment
- Council tax band - B
- Energy performance rating - C

## Viewing

Please contact our Sales Office on 01268 730707 if you wish to arrange a viewing appointment for this property or require further information.



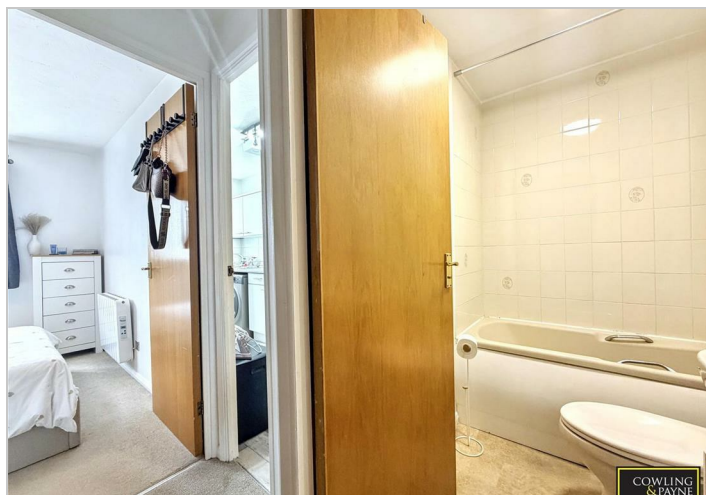
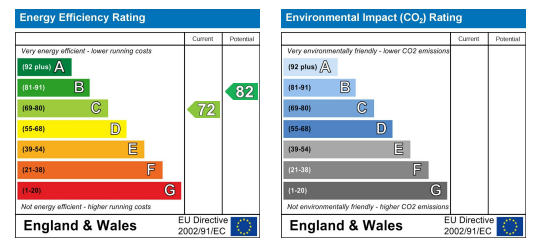
# Floor Plan



# Area Map



# Energy Efficiency Graph



These particulars, whilst believed to be accurate are set out as a general outline only for guidance and do not constitute any part of an offer or contract. Intending purchasers should not rely on them as statements of representation of fact, but must satisfy themselves by inspection or otherwise as to their accuracy. No person in this firm's employment has the authority to make or give any representation or warranty in respect of the property.