



Richmond Road, TW1

£399,950

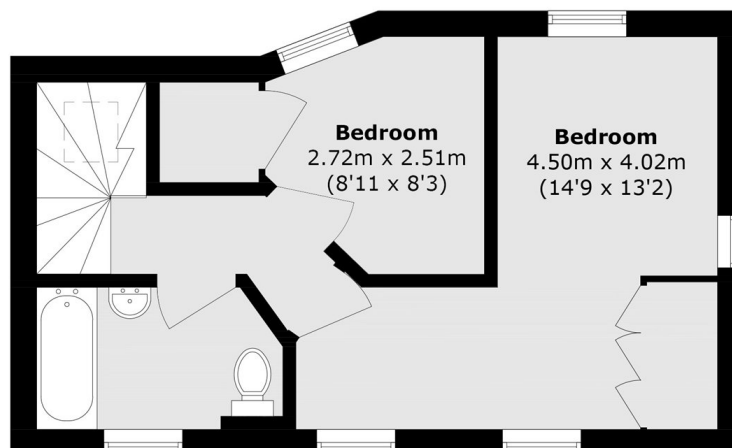
A charming two bedroom split level apartment situated in a prime location between Twickenham and St. Margaret's. The lower level comprises a spacious reception room with ample space for both living and dining, alongside a well appointed kitchen offering good storage and worktop space. Upstairs, the property features one large primary bedroom complemented by a comfortable second bedroom and a modern bathroom, creating a clear separation between living and sleeping accommodation. The flat benefits from good natural light throughout due to its large dual aspect windows and a tasteful contemporary finish.

Situated within easy reach of Twickenham mainline station and local shops, cafés and restaurants, as well as a short walk to St. Margaret's, Richmond and green spaces including Marble Hill Park. This property combines comfort, convenience and a highly sought after location.

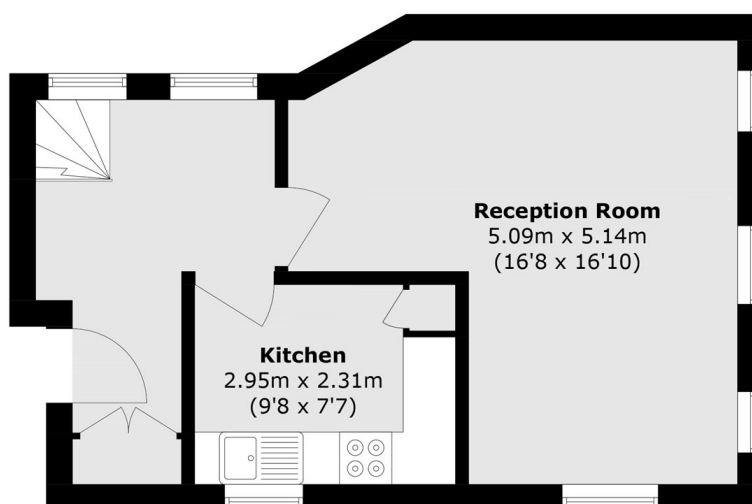
Features

- Two Bedrooms
- Prime Location
- Split Level
- Great Condition
- Large Reception
- Excellent Transport Links

Richmond Road, Twickenham, TW1



Third Floor



Second Floor

Total area (approx.): 70.9 sq. m (763.1 sq. ft)