



**THE
OLD
HALL**

WHITTINGTON | CHELTENHAM



A HOUSE OF DISTINCTION

Set within the prestigious grounds of Sandywell Park, The Old Hall is an exceptional Grade II* listed residence that exudes character, grandeur and charm. Dating back to 1704, this historic home has been featured in Condé Nast and offers over 3,500 sq. ft. of accommodation. Combining striking period features with modern comforts, it provides a rare opportunity to enjoy life in one of the Cotswolds' most exclusive settings.

THE
OLD
HALL



FROM THE
MOMENT YOU
STEP INSIDE, THE
RECEPTION HALL
SETS THE TONE
WITH ITS SENSE
OF SCALE AND
ELEGANCE.

GRAND INTERIORS

The ground floor includes an impressive formal dining room and a spacious breakfast kitchen with granite worktops and integrated appliances. The showpiece is the magnificent 31ft drawing room, where high ceilings, sash windows and exquisite detailing create a very special living and entertaining spaces. A utility room, a shower room and a gym / hobbies room with direct garage access complete the downstairs.





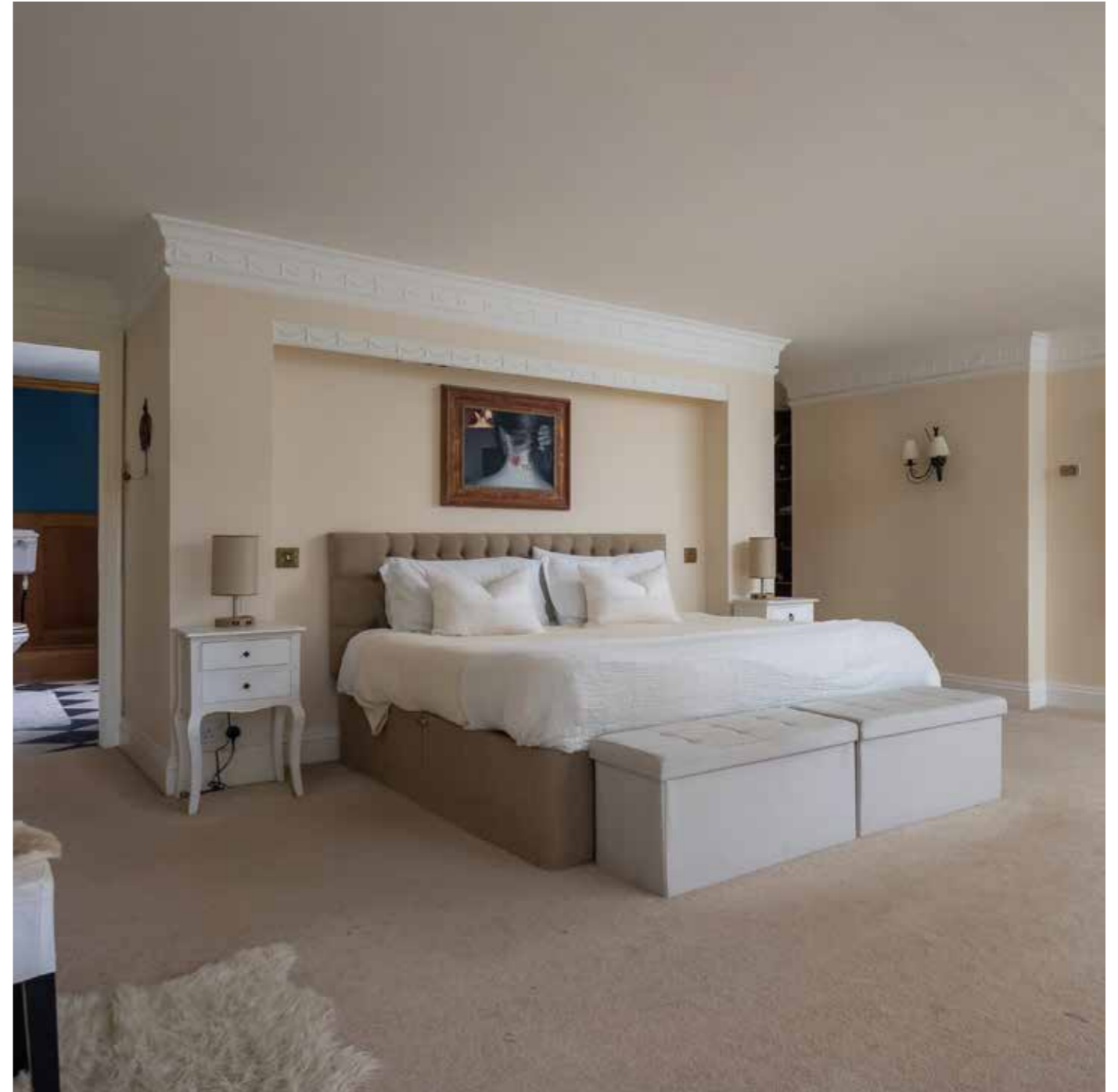
THE
OLD
HALL





ELEGANT BEDROOMS

This comfortable home offers five generous bedrooms, each brimming with character. The principal suite features fitted storage and an en suite. A family bathroom, cloakroom and additional bedrooms ensure ample space for family and guests. Tall windows flood the rooms with natural light and frame views of the stunning landscaped grounds.





THE
OLD
HALL



A UNIQUE LIFESTYLE

Life at Sandywell Park is about so much more than just a beautiful, historic house. Residents enjoy shared access to around 5.8 acres of landscaped gardens, an outdoor heated swimming pool and a private tennis court – rare privileges in such a setting. The Old Hall also offers a garage, private gravelled driveway with generous parking and the peace of mind of a managed estate. The communal, parkland style gardens are tended year-round, while the surrounding Cotswold countryside provides endless opportunities for walks and outdoor pursuits.





THE
OLD
HALL

LOCATION

Perfectly positioned between Cheltenham and Andoversford, Sandywell Park offers the best of both worlds: a tranquil semi-rural environment within minutes of town. Cheltenham itself is famed for its Regency architecture, Michelin-starred dining, boutique shopping and vibrant festivals – from literature and jazz to the world-renowned Cheltenham Gold Cup.

Exceptional independent schooling, including Cheltenham College, Cheltenham Ladies' College and Dean Close, is also within easy reach.

WHERE TO GO WHEN YOU NEED:

A Fine Meal: Head just 2.5 miles away to Dunkertons Park where you'll find a mix of organic dining, artisan produce and craft cider. For something special, Cheltenham is minutes away, with Michelin-starred Le Champignon Sauvage and the ever-popular Prithvi for modern Indian cuisine.

Fresh Air: Step straight out into the Cotswold countryside – perfect for dog walks, cycling, or simply soaking up the scenery. Locally, the Dowdeswell Reservoir walk is a favourite for peace and tranquillity, with trails leading into ancient woodland and rolling farmland.

Everyday Essentials: Nearby Charlton Kings provides a handy Sainsbury's Local and a Co-Op as well as independent shops and pubs, while Cheltenham (a short drive away) has everything from Waitrose, M&S and Sainsbury's superstores to artisan bakeries and delicatessens.

First Class Schooling: The area is home to some of the country's finest schools. Cheltenham College, Cheltenham Ladies' College, Dean Close and Pate's Grammar are all within easy reach, offering an outstanding educational experience.

A Day Out: Explore Stow-on-the-Wold or Cirencester for Cotswold market-town charm, antiques and afternoon tea. If you are seeking an adrenaline rush, the world-class racing at Cheltenham is an annual highlight, culminating in the Gold Cup.

Wellbeing: Unwind with a spa day at Cowley Manor, just a short drive away, or retreat into the landscaped grounds at Sandywell Park itself, where a heated swimming pool and private tennis court are just steps from your door.



THE
OLD
HALL

Approximate Floor Area: 3339 sq.ft / 310 sq.m

Garage: 195 sq.ft / 18 sq.m

Total: 3534 sq.ft / 328 sq.m

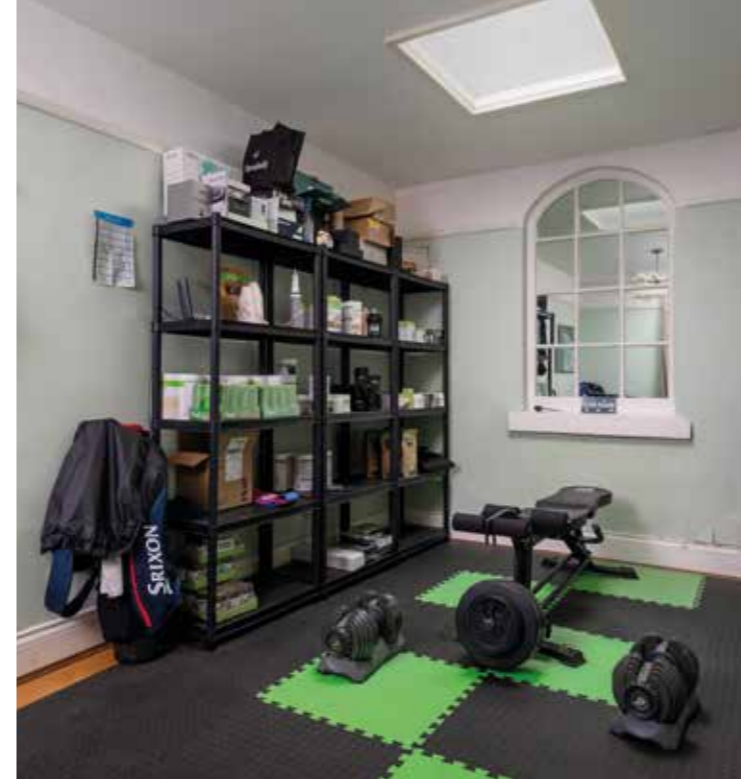


Important notice: Stowhill Estates Ltd, their clients and any joint agents give notice that:

- 1) They are not authorised to make or give any representations or warranties in relation to the property either here or elsewhere, either on their own behalf or on behalf of their client or otherwise. They assume no responsibility for any statement that may be made in these particulars. These particulars do not form part of any offer or contract and must not be relied upon as statements or representations of fact.
- 2) Any areas, measurements or distances are approximate. The text, photographs and plans are for guidance only and are not necessarily comprehensive.

It should not be assumed that the property has all necessary planning, building regulation or other consents and Stowhill Estates Ltd have not tested any services, equipment or facilities Purchasers must satisfy themselves by inspection or otherwise. Photos and Brochure prepared September 2025.

This floor plan including furniture, fixture measurements and dimensions are approximate and for illustrative purposes only. Boxbrownie.com gives no guarantee, warranty or representation as to the accuracy and layout. All enquiries must be directed to the agent, vendor or party representing this floor plan. Produced for Stowhill Estates.



The Finer Details...

Grade II* listed

Mains electricity, mains water,
private drainage to septic tank,
electric storage heating

Ultrafast Broadband is available

An estate charge is payable - further
information is available upon request



Scan me to book a viewing
or call the Stowhill Estates Team on:
01242 384444 | contact@stowhillestates.com



STOWHILL ESTATES

What Three Words: [:///distanced.protrude.rules](https://www.threewords.co.uk/words/:///distanced.protrude.rules)