



6a Warefield Road, Paignton

Paignton

Guide Price £145,000



6a Warefield Road

Paignton

Charming 2-bed first floor flat near Paignton sea front. Features modern kitchen, lounge with bay window, 2 bedrooms, modern bathroom. Newly fitted uPVC double glazed windows. Parking. No onward chain.

Council Tax band: B

Tenure: Freehold

EPC Energy Efficiency Rating: C

EPC Environmental Impact Rating: C

- Light and airy first floor flat
- 2 Bedrooms
- Modern fitted kitchen with integrated appliances
- Newly fitted uPVC double glazed windows
- Gas central heating
- Modern bathroom
- Parking/storage at the rear
- Close to Paignton sea front and town centre
- No onward chain
- EPC - C. Council tax B.



6a Warefield Road

Paignton

The property is located in a popular area only a short walk to Paignton sea front with its choice of beaches and amenities. Paignton town centre is also only a short walk away and offers a variety of shops, cafes and restaurants. For the walking enthusiast there is the stunning coastal walk linking the nearby towns of Brixham and Torquay. Paignton also has a railway station which connects to the mainline station in Newton Abbot, along with regular bus services.

Absolute Sales & Lettings

Absolute Sales & Lettings, 27 Hyde Road - TQ4 5BP

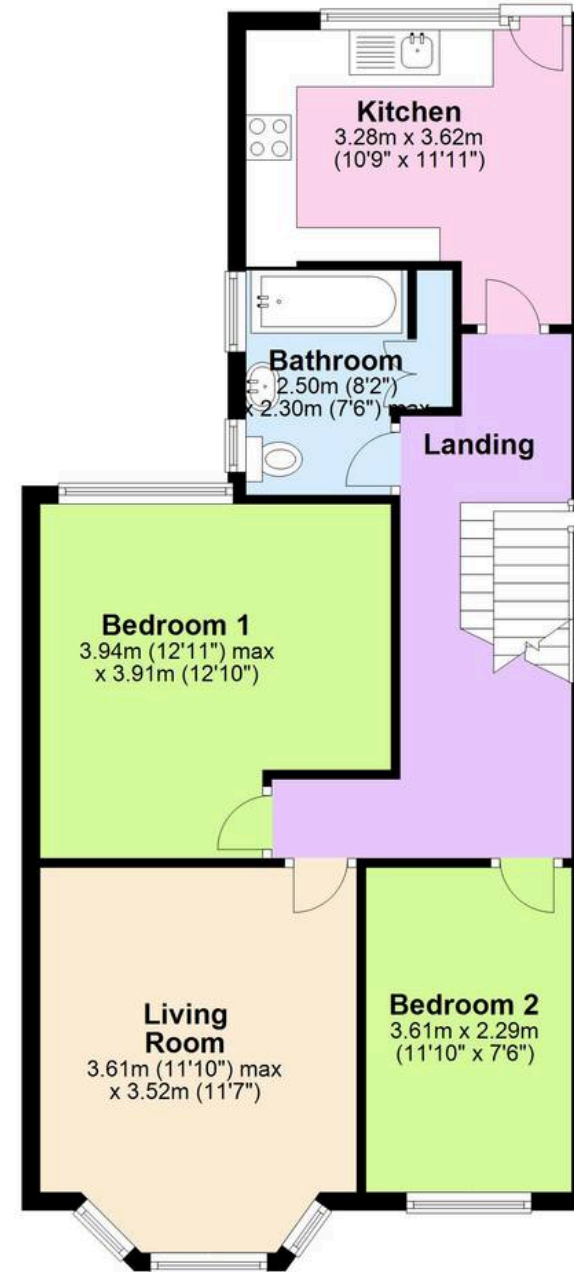
01803 890110

paignton@movewithabsolute.co.uk

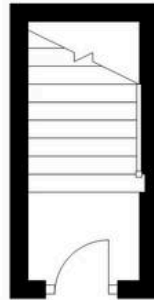
<http://www.movewithabsolute.co.uk>



First Floor
Approx. 65.8 sq. metres (708.0 sq. feet)



Ground Floor
Approx. 3.6 sq. metres (38.4 sq. feet)



Total area: approx. 69.3 sq. metres (746.4 sq. feet)

Approx.
Plan produced using PlanUp.

