



**Price**  
**£290,000**

**Freehold**

3x  1x  1x 

**Wildman Close,  
Rainham, Gillingham,  
Kent, ME8**

**OVER 60?**

Secure this property  
for up to **59% less!**

*Wards*  
Helping you move forwards





## Main features

- An immaculately presented property that offers excellent value for money
- Open plan lounge/diner and smart re-fitted kitchen
- Modern bathroom suite
- Low maintenance rear garden
- Useful garage en-bloc
- Ideal first home!!

## Accommodation

### GROUND FLOOR

Porch  
Entrance Hall  
Lounge/Diner: 15'1 x 9'3 (4.60m x 2.82m)  
Kitchen: 11'5 x 8'5 (3.48m x 2.57m)

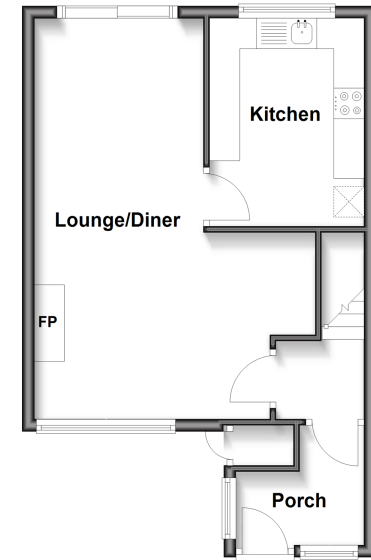
### FIRST FLOOR

Landing  
Bedroom 1 : 10'8 x 9'3 (3.25m x 2.82m)  
Bedroom 2 : 10'1 x 9'2 (3.08m x 2.80m)  
Bedroom 3 : 8'6 x 7'5 (2.59m x 2.26m)  
Bathroom

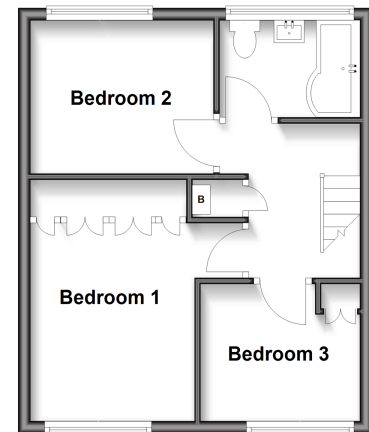
### OUTSIDE

Front Garden  
Rear Garden  
Garage En-Bloc

**Ground Floor**  
Approx. 40.2 sq. metres (432.5 sq. feet)



**First Floor**  
Approx. 35.8 sq. metres (385.5 sq. feet)



**Call Rainham - 01634 373531 ■ [wardsofkent.co.uk](http://wardsofkent.co.uk)**

- Legal advice should be taken to verify fixtures/fittings, planning, alterations and/or lease details
- Appliances & services are untested, dimensions are approximate and floor plans are not to scale
- Through a Homewise Home For Life Plan people aged 60+ can secure this property for up to 59% less, by purchasing a Lifetime Lease.



11320300/20250208/CW/DW