



Harpenden Road | London | SE27


£3,500 pcm

- Three double bedrooms
- Private garden
- Lots of natural light
- Separate kitchen and living room
- Office room
- Local amenities
- West Norwood station
- Tulse hill
- Excellent bus routes
- Unfurnished



This bright and spacious four bedroom, Victorian house is perfectly positioned within walking distance of both Tulse Hill and West Norwood stations, offering excellent transport links and local amenities. Downstairs is a large double reception room and separate kitchen with new appliances. Upstairs are three double bedrooms, one single room and a family bathroom. The property is offered unfurnished and is now available

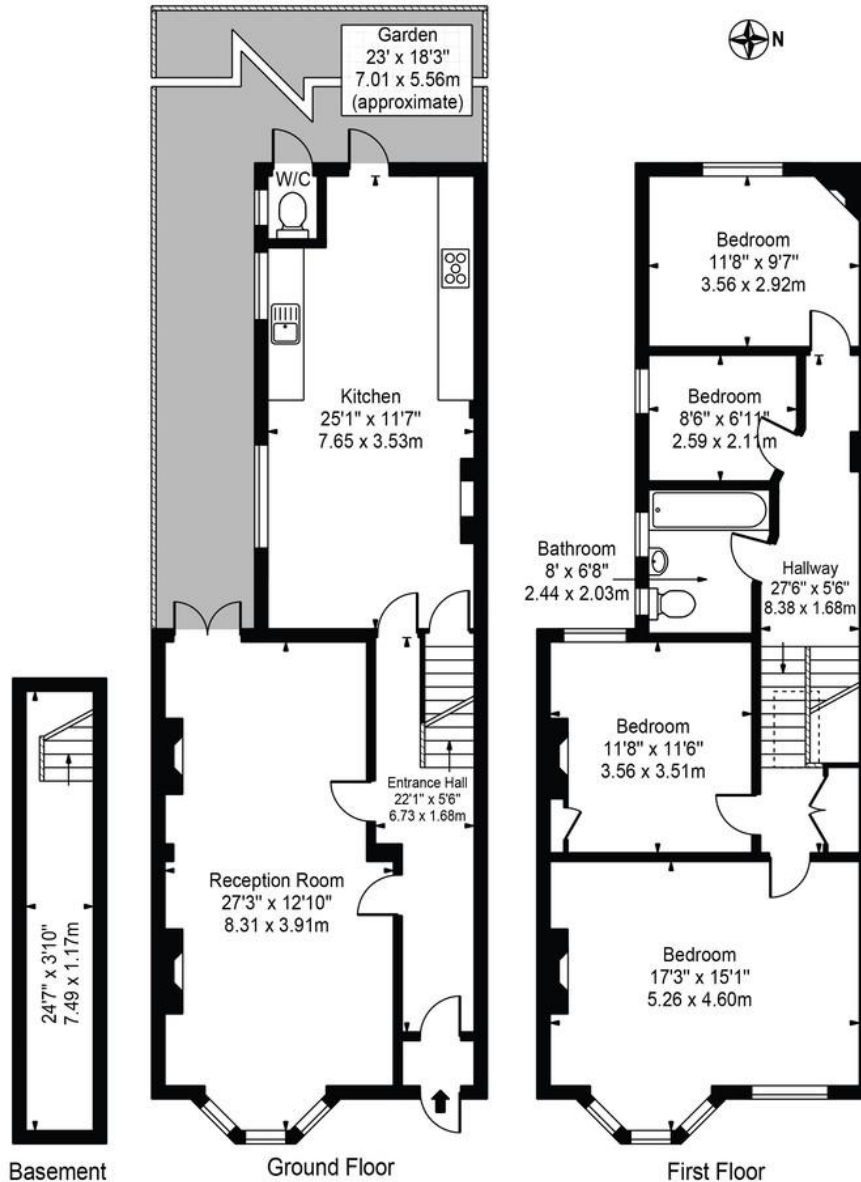


Energy Efficiency Rating		
	Current	Potential
Very energy efficient - lower running costs		
(92+) <b>A</b>		
(81-91) <b>B</b>		
(69-80) <b>C</b>		69
(55-68) <b>D</b>	49	
(39-54) <b>E</b>		
(21-38) <b>F</b>		
(1-20) <b>G</b>		
Not energy efficient - higher running costs		
<b>England &amp; Wales</b>	EU Directive 	

# Harpenden Road, SE27 0AF

Approx. Gross Internal Area 1563 Sq Ft - 145.21 Sq M  
(Excluding W/C)

Approx. Gross Internal Area Of W/C 10 Sq Ft - 0.93 Sq M



For Illustration Purposes Only - Not To Scale

This floor plan should be used as a general outline for guidance only and does not constitute in whole or in part an offer or contract. Any intending purchaser or lessee should satisfy themselves by inspection, searches, enquiries and full survey as to the correctness of each statement. Any areas, measurements or distances quoted are approximate and should not be used to value a property or be the basis of any sale or let.

## Viewing Arrangements

Strictly by appointment

## Contact Details

121 Denmark Hill

London

SE5 8EN

[www.urbanvillagehomes.co.uk](http://www.urbanvillagehomes.co.uk)

[lettings@urbanvillagehomes.com](mailto:lettings@urbanvillagehomes.com)

020 3519 9121

Agents Note: Whilst every care has been taken to prepare these sales particulars, they are for guidance purposes only. All measurements are approximate and for general guidance purposes only and whilst every care has been taken to ensure their accuracy, they should not be relied upon and potential buyers are advised to recheck the measurements