



High street, Codford

£375,000



Key Features

- Private Parking
- Sun Filled Garden
- Ample Storage
- Village Location
- EPC rating C
- Freehold
- Parking for 2 Cars





The property features three generous double bedrooms, large family bathroom and downstairs WC, providing comfortable and flexible space for families or those needing room for guests or home working. The kitchen enjoys excellent natural light and offers ample space for dining, creating a sociable hub for everyday living. A separate reception room provides a defined sitting area, ideal for relaxing or entertaining.



Outside, the property benefits from a private garden, offering a pleasant area for outdoor dining, children's play or gardening. The inclusion of off-street parking adds further practicality.



Codford is a well-established and sought after village, offering a welcoming community and a good selection of amenities including a village shop, primary school, church and various community facilities. The surrounding countryside provides attractive walking and cycling routes, making it an appealing location for those who enjoy spending time outdoors.

Warminster, the nearest larger town, offers a wider range of supermarkets, schools and leisure facilities. Warminster railway station provides direct services to Salisbury, Bath and Bristol, with typical journey times of around 25-30 minutes to Salisbury and approximately 45-60 minutes to Bath and Bristol Temple Meads. Road connections are also convenient via the A36, offering straightforward access towards both Salisbury and Bath.

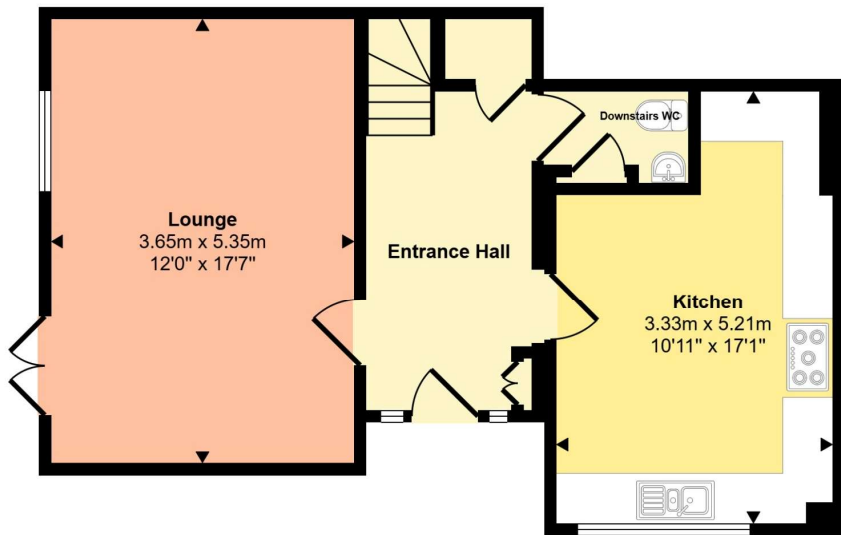
Overall, this semi-detached three-bedroom home presents an excellent opportunity for buyers seeking a village lifestyle with good amenities, attractive green spaces and strong transport links to nearby towns and cities.



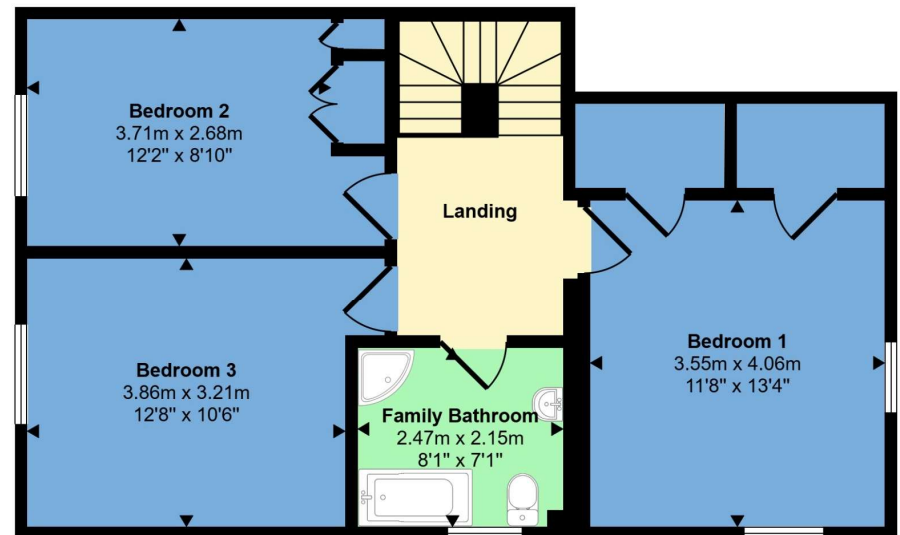






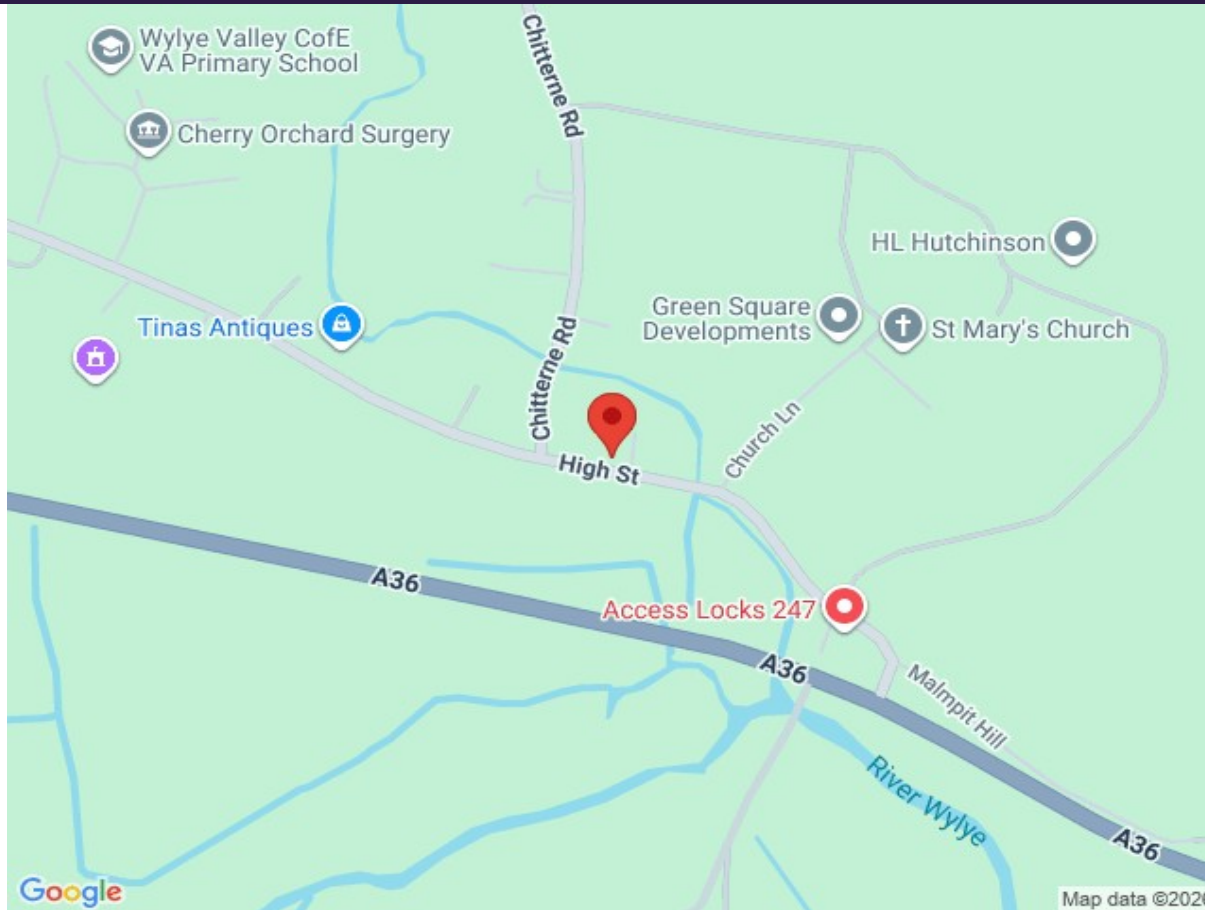


Ground Floor



First Floor

This floorplan is only for illustrative purposes and is not to scale. Measurements of rooms, doors, windows, and any items are approximate and no responsibility is taken for any error, omission or mis-statement. Icons of items such as bathroom suites are representations only and may not look like the real items. Made with Made Snappy 360.



16a High Street Codford WARMINSTER BA12 0NA		Energy rating C
Valid until 20 February 2034	Certificate number 0400-6837-0322-8392-3243	
Property type	Semi-detached house	
Total floor area	96 square metres	



01985 220 290

warminster@northwooduk.com