



# Zeno Court

19 Long Walk, SE1

Asking Price £600,000

A stylish two-bedroom split level apartment in a modern development moments from the fashionable Bermondsey Street.

**CHESTERTONS**



# Zeno Court

19 Long Walk, SE1

- Stylish duplex with modern interior design
- Spacious layout across two bright floors
- Two double bedrooms, two bathrooms
- Semi open-plan kitchen, breakfast bar
- South-facing windows, private outdoor balcony
- Brand-new 999-year lease for security
- Near Bermondsey Street, markets, galleries, parks
- Excellent transport links across central London
- Recently refurbished



This stylish duplex apartment offers approximately 810 sq. ft. (75.3 sq. m.) of thoughtfully designed living space across the ground and first floors of a modern development. On the ground floor, you'll find a spacious entrance hallway, two generous double bedrooms, and a newly refurbished bathroom. Upstairs, the bright reception area is flooded with natural light thanks to floor-to-ceiling south-facing windows, which open onto a private balcony. The semi open-plan kitchen features sleek gloss cabinetry, integrated appliances, and a convenient breakfast bar, while the fully tiled family bathroom adds a touch of luxury. The property benefits from a brand-new 999-year lease, ensuring long-term security and peace of mind.

Located in a vibrant and well-connected part of London, the apartment enjoys easy access to Bermondsey Street's eclectic mix of bars and restaurants, as well as Maltby Street and Borough Markets. Cultural highlights like the White Cube Gallery and green spaces such as Tanner Street Park are just moments away, with the Thames also within walking distance. Excellent transport links include London Bridge station (0.7 miles), Borough (0.7 miles), and Elephant & Castle (1.1 miles), offering Northern, Jubilee, Bakerloo, and National Rail services across the capital and beyond. This is a fantastic opportunity for buyers seeking modern city living in a thriving neighbourhood.

**Tenure:** Leasehold 999 years 1 months

**Service Charge:** £2284.5

**Ground Rent:** £750

**Local Authority:** Southwark

**Council Tax Band:** E

Score	Energy rating	Current	Potential
92+	A		
81-91	B		
69-80	C	80 C	80 C
55-68	D		
39-54	E		
21-38	F		
1-20	G		

### *Chestertons Tower Bridge Sales*

220 Tower Bridge Road

Tower Bridge

London

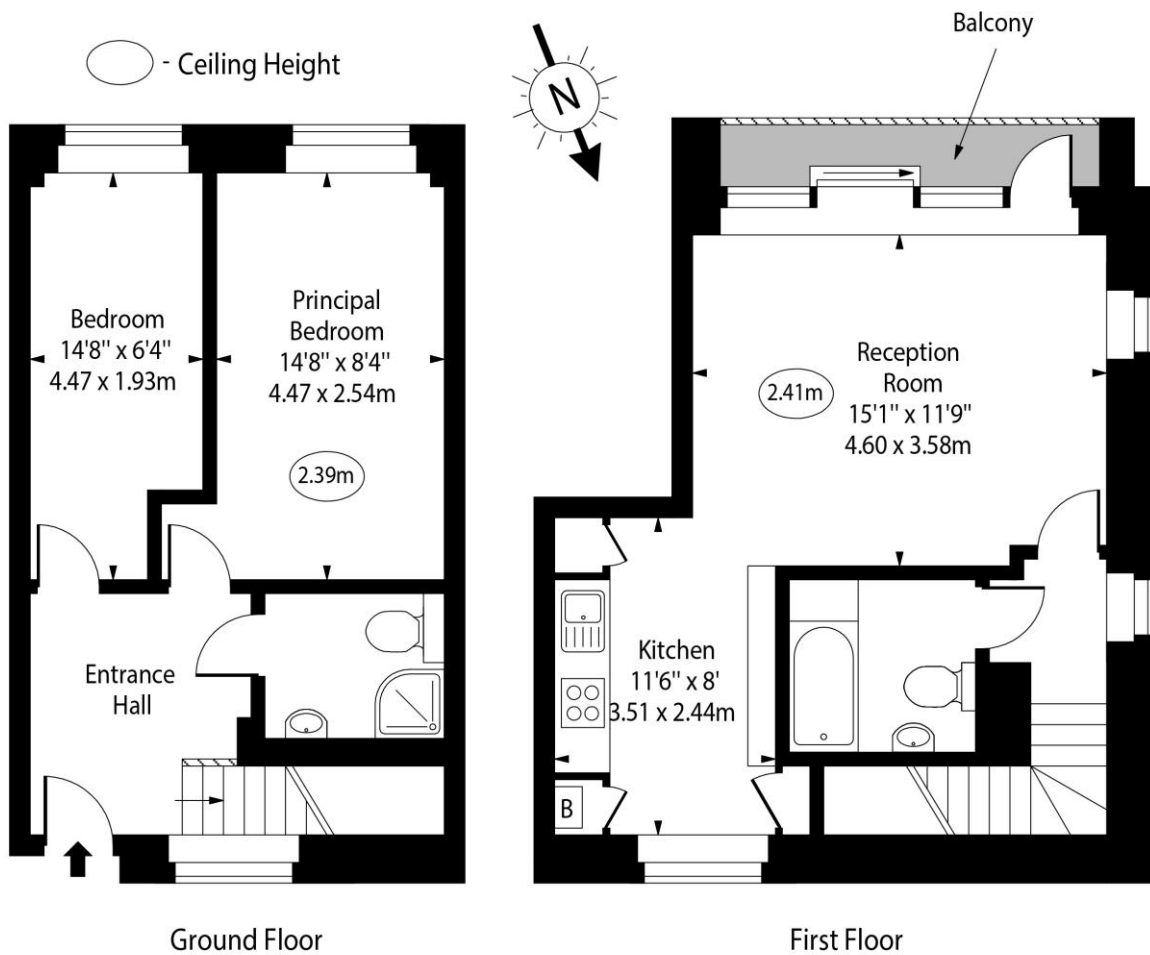
SE1 2UP

towerbridge@chestertons.co.uk

020 7357 7999

chestertons.co.uk

## Zeno Court, Long Walk, SE1



Approx Gross Internal Area      810 Sq Ft - 75.25 Sq M

For Illustration Purposes Only - Not To Scale